

APP CRS <b>311°</b>	Rwy Idg TDZE Apt Elev	<b>8373</b> <b>523</b> <b>607</b>
------------------------	-----------------------------	---

# RNAV (RNP) Z RWY 31R

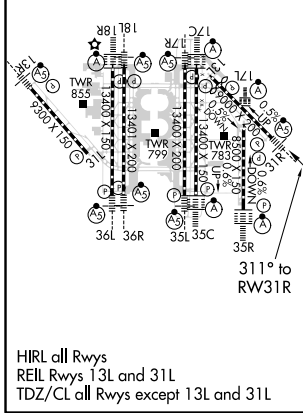
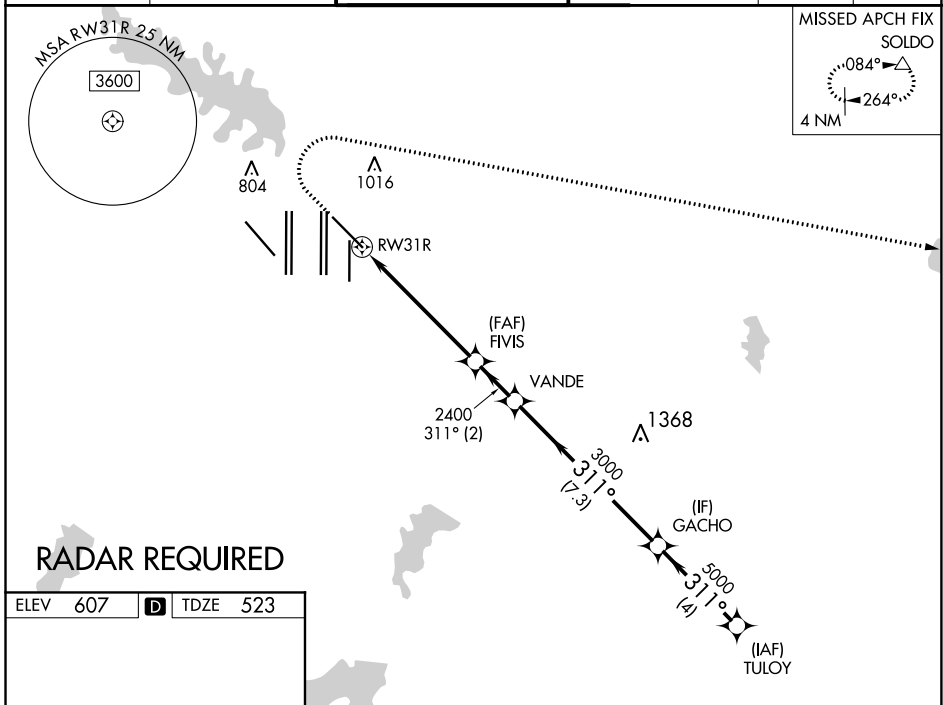
DALLAS-FORT WORTH INTL (DFW)

**▼** For uncompensated Baro-VNAV systems, procedure NA below -4°C (25°F) or above 54°C (130°F). For inop MALSR, increase RNP 0.14 all Cats visibility to RVR 5100, RNP 0.23 all Cats visibility to 1 3/8 mile, RNP 0.30 all Cats visibility to 1 1/2 mile. Simultaneous approach authorized with Rwy 31L. GPS Required. Use of FD or AP providing RNAV track guidance required during simultaneous operations.



**MISSED APPROACH:** Climb to 1100 then climbing right turn to 3000 direct SOLDO and hold.

D-ATIS ARR <b>123.775</b> DEP <b>135.925</b>	REGIONAL APP CON <b>135.5 125.2</b>	DFW TOWER <b>126.55 127.5 EAST</b> <b>124.15 134.9 WEST</b>	GND CON <b>121.65 121.8 EAST</b> <b>121.85 WEST</b>	CLNC DEL <b>128.25</b>	CPDLC
--	--	---	---	---------------------------	-------



ELEV 607	<b>D</b>	TDZE 523	
1100	3000	SOLDO	VGSI and RNAV glidepath not coincident (VGSI Angle 3.00/TCH 69).
RWY 31R	FIVIS 2400	VANDE 3000	GACHO 5000
	TULYO 5000		
			GP 3.00° TCH 53
	5.8 NM	2 NM	7.3 NM
			4 NM
CATEGORY	A	B	C
RNP 0.14 DA		838/27	315 (300-5%)
RNP 0.23 DA		928/44	405 (400-7%)
RNP 0.30 DA		987/55	464 (400-1)
<b>AUTHORIZATION REQUIRED</b>			

SC-2, 25 FEB 2021 to 25 MAR 2021

SC-2, 25 FEB 2021 to 25 MAR 2021