

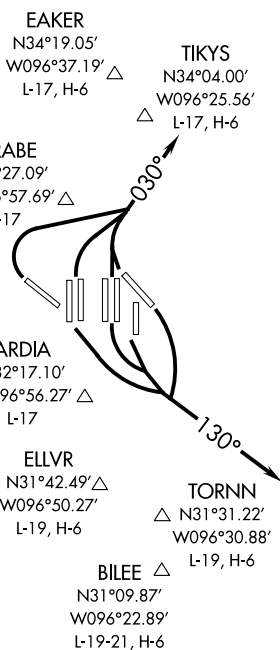
TRI-GATE THREE DEPARTURE

AL-6039 (FAA)

DALLAS-FORT WORTH, TEXAS

D-ATIS DEP
135.925
CLNC DEL
128.25
CPDLC
GND CON
121.65 121.8 (EAST)
121.85 (WEST)
DFW TOWER
126.55 127.5 (EAST)
124.15 134.9 (WEST)
REGIONAL DEP CON
124.3 282.275 (NORTH)
125.2 343.65 (SOUTH)

OKMULGEE
114.9 OKM
Chan 96
N35°41.58'-W095°51.96'
L-15, H-6



**TOP ALTITUDE:
2000**

NOTE: RADAR required.
NOTE: For non-turboprop aircraft only.

NAVASOTA
115.9 TNV
Chan 106
N30°17.31'-W096°03.49'
L-19-21, H-7

TAKEOFF MINIMUMS

Rwy 35R: NA-ATC.

Rwys 13L/R, 17L/C/R, 18L/R, 31L/R, 35L/C, 36L/R: Standard.

NOTE: Chart not to scale.

DEPARTURE ROUTE DESCRIPTION

TAKEOFF RUNWAYS 13L/R, 17L/C/R, 18L/R: Climb on heading 130° for RADAR vectors to appropriate fix, thence

TAKEOFF RUNWAYS 31L/R, 35L/C, 36L/R: Climb on heading 030° for RADAR vectors to appropriate fix, thence

. . . . maintain 2000 or as assigned by ATC, expect filed altitude 10 minutes after departure.

SC-2, 25 FEB 2021 to 25 MAR 2021

SC-2, 25 FEB 2021 to 25 MAR 2021