

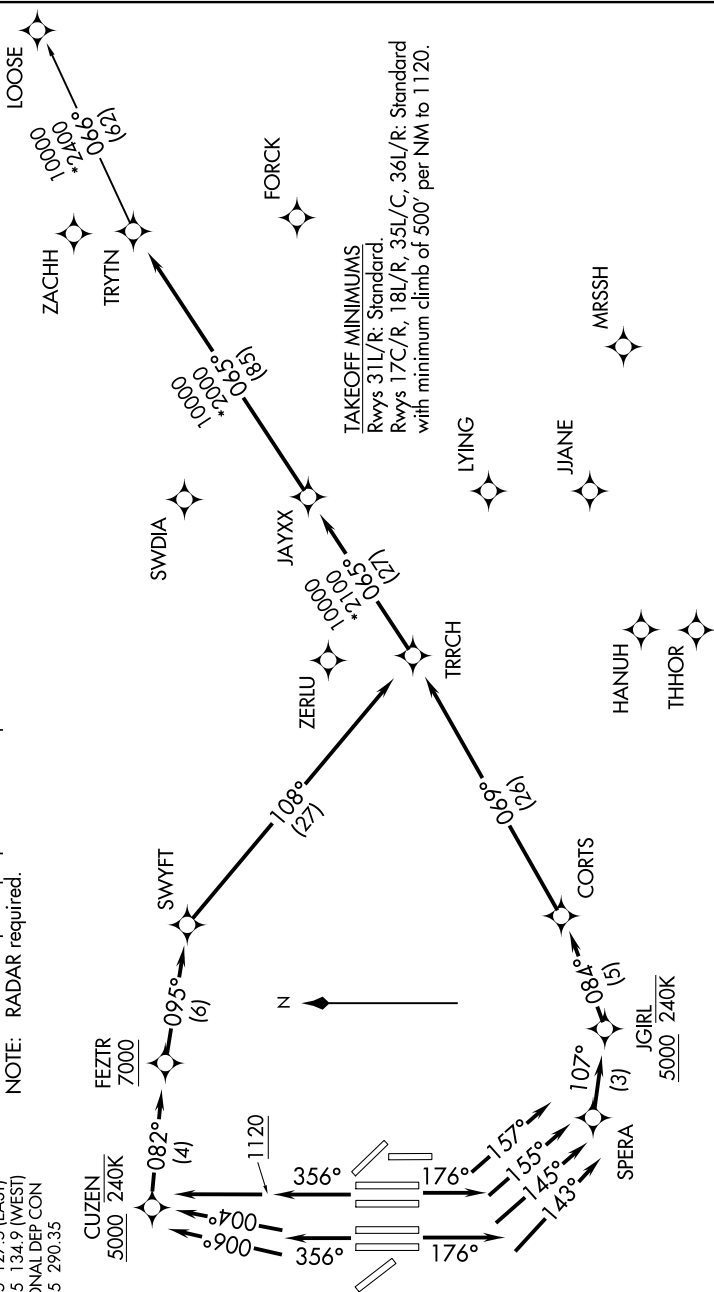
TRYTN THREE DEPARTURE (RNAV)

TOP ALTITUDE:
RWYS 31L/31R: 5000
**RWYS 17C/17R/18L/18R/
 35L/35C/36L/36R: 10000**

- NOTE: DME/DME/IRU or GPS required.
- NOTE: RNAV 1.
- NOTE: For use by turbojet aircraft only.
- NOTE: Non-RNAV capable props: File and expect WYLIE or HUBBARD DEPARTURE.
- NOTE: RNAV capable props: File and expect the KUSSO RNAV SID.
- NOTE: RADAR required.

SC-2, 25 FEB 2021 to 25 MAR 2021

- D-ATIS DEP 135.925
- CINC DEL 128.25
- CPDLC GND CON
- 121.65 121.8 (EAST)
- 121.85 (WEST)
- DFW TOWER 126.55 127.5 (EAST)
- 124.15 134.9 (WEST)
- REGIONAL DEP CON 118.55 290.35



TAKEOFF MINIMUMS
 Rwys 31L/R: Standard.
 Rwys 17C/R, 18L/R, 35L/C, 36L/R: Standard
 with minimum climb of 500' per NM to 1120.

(NARRATIVE ON FOLLOWING PAGE)

SC-2, 25 FEB 2021 to 25 MAR 2021

TRYTN THREE DEPARTURE (RNAV)

NOTE: Chart not to scale.