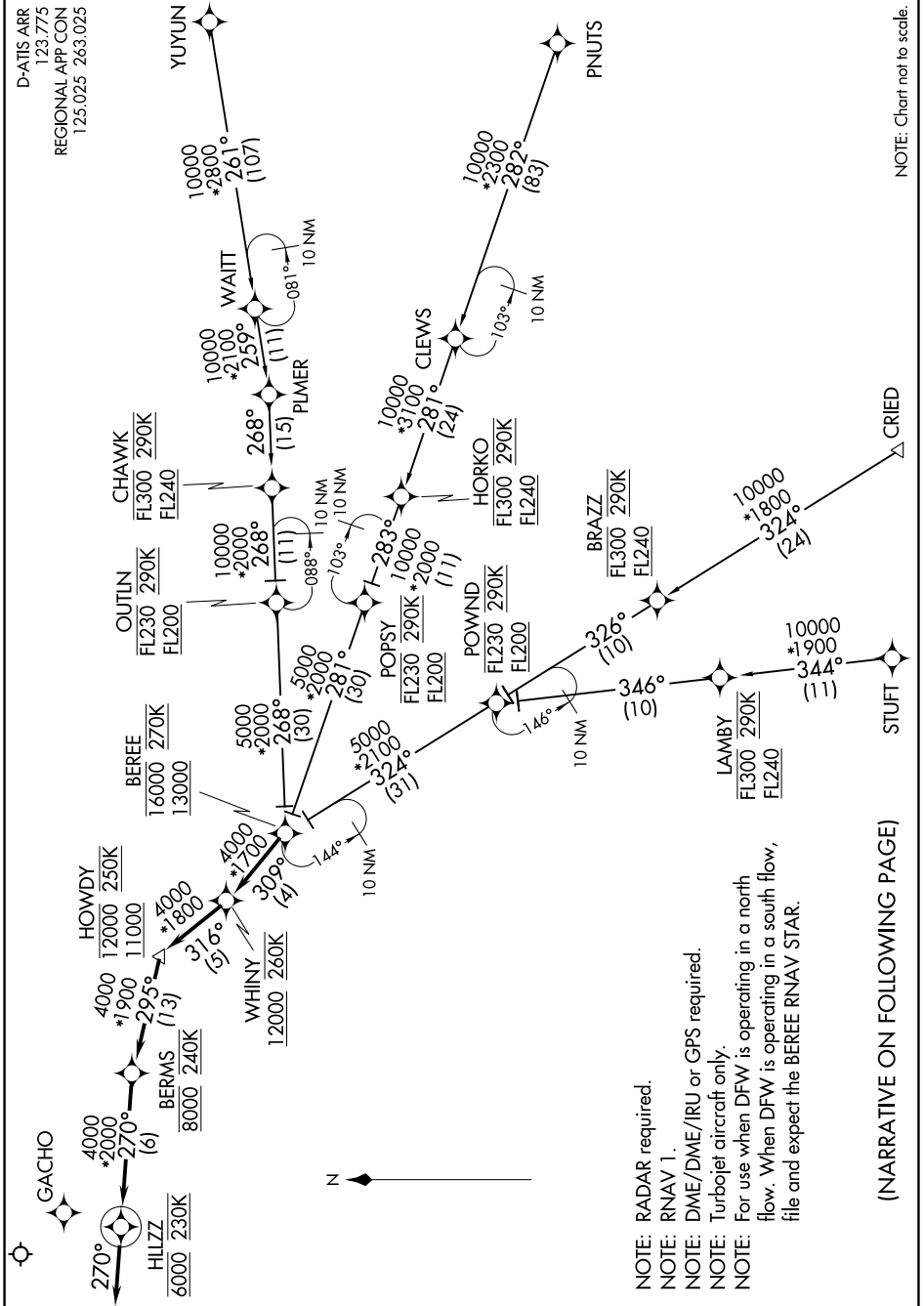


# WHINY FOUR ARRIVAL (RNAV)

D-ATIS ARR  
123.775  
REGIONAL APP CON  
125.025 263.025

SC-2, 25 FEB 2021 to 25 MAR 2021



NOTE: Chart not to scale.

NOTE: RADAR required.  
 NOTE: RNAV 1.  
 NOTE: DME/DME/IRU or GPS required.  
 NOTE: Turbojet aircraft only.  
 NOTE: For use when DFW is operating in a north flow. When DFW is operating in a south flow, file and expect the BEREE RNAV STAR.

(NARRATIVE ON FOLLOWING PAGE)

SC-2, 25 FEB 2021 to 25 MAR 2021

# WHINY FOUR ARRIVAL (RNAV)