

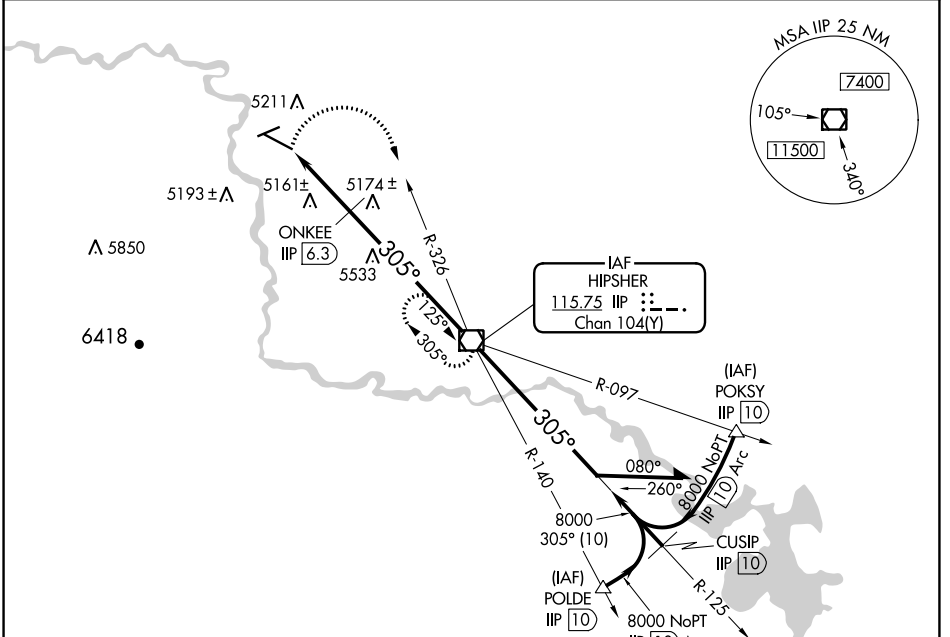
VOR/DME IIP <b>115.75</b>	APP CRS <b>305°</b>	Rwy Idg TDZE Apt Elev	<b>6534</b> <b>4933</b> <b>4933</b>
Chan <b>104(Y)</b>			

# VOR RWY 29

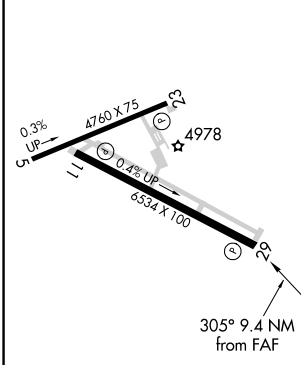
CONVERSE COUNTY (DGW)

**MISSED APPROACH:** Climbing right turn to 8000 via heading 160° and IIP VOR/DME R-326 to IIP VOR/DME and hold, continue climb-in-hold to 8000.

ASOS <b>135.225</b>	DENVER CENTER <b>135.6 363.025</b>	UNICOM <b>122.8</b> (CTAF) <b>0</b>
------------------------	---------------------------------------	----------------------------------------

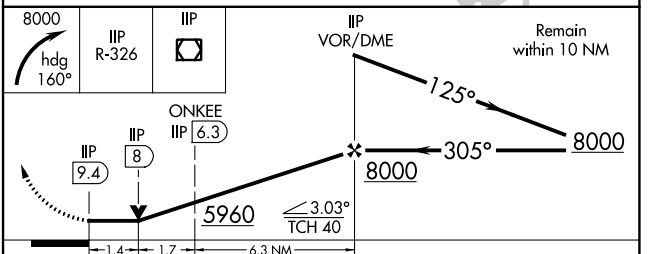


ELEV 4933	TDZE 4933
-----------	-----------



REIL Rwy 11 and 29 **0**  
MIRL Rws 11-29 and 5-23 **0**  
FAF to MAP 9.4 NM

Knots	60	90	120	150	180
Min:Sec	9:24	6:16	4:42	3:46	3:08



CATEGORY	A	B	C	D
S-29	5960-1¼ 1027 (1100-1¼)	5960-1½ 1027 (1100-1½)	5960-3	1027 (1100-3)
CIRCLING	5960-1¼ 1027 (1100-1¼)	5960-1½ 1027 (1100-1½)	5960-3	1027 (1100-3)
ONKEE FIX MINIMUMS				
S-29	5420-1	487 (500-1)	5420-1¼ 487 (500-1¼)	5420-1½ 487 (500-1½)
CIRCLING	5520-1	587 (600-1)	5520-1½ 587 (600-1½)	5540-2 607 (700-2)

NW-1, 25 FEB 2021 to 25 MAR 2021

NW-1, 25 FEB 2021 to 25 MAR 2021