

LOC/DME I-DJK 109.95 Chan 36 (Y)	APP CRS 022°	Rwy Idg 7026 TDZE 913 Apt Elev 914
--	------------------------	---

I LS or LOC RWY 2

DE KALB TAYLOR MUNI (DKB)

⚠ VDP NA when using Aurora altimeter setting. When local altimeter setting not received, use Aurora altimeter setting and increase all DA 61 feet and all MDA 80 feet, CETAN fix minimums increase Circling Cat C/D visibility 1/2 mile. For inoperative MALSRS, increase S-ILS 2 all Cats visibility to 7/8 mile. CETAN fix minimums: For inoperative MALSRS, increase S-LOC 2 Cat C/D visibility to 1 mile.



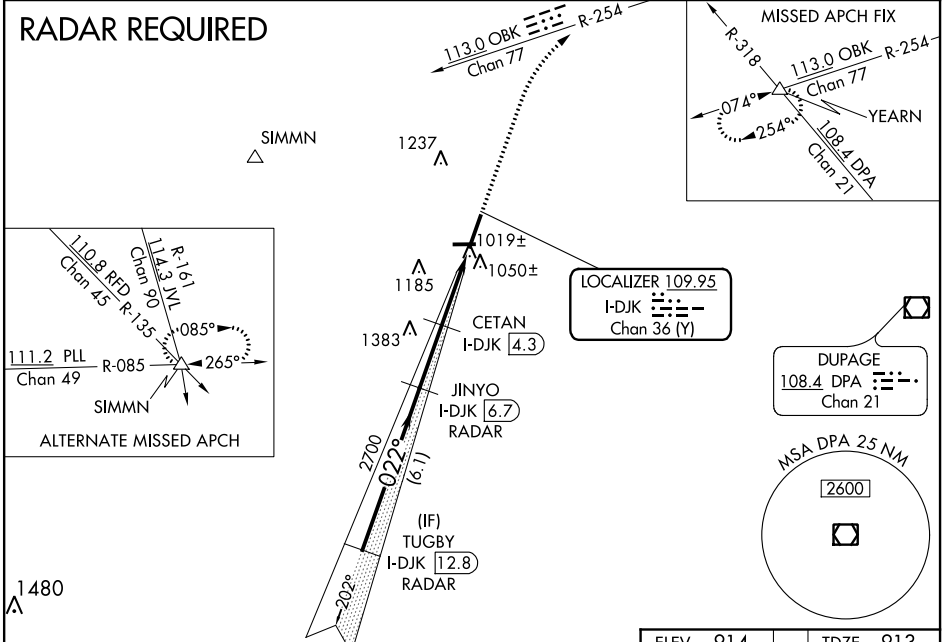
MISSED APPROACH: Climb to 3000 on heading 022° and OBK VOR/DME R-254 to YEARN Int and hold.

AWOS-3
119.075

CHICAGO APP CON
133.5 349.0

UNICOM
122.7 (CTAF) 0

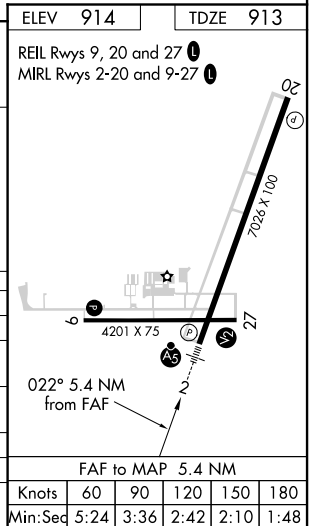
RADAR REQUIRED



EC-3, 25 FEB 2021 to 25 MAR 2021

EC-3, 25 FEB 2021 to 25 MAR 2021

TUGBY I-DJK 12.8 RADAR	JINYO I-DJK 6.7 RADAR	CETAN I-DJK 4.3	OBK R-254	YEARN
2700		2700	3000	hdg 022°
GS 3.00° TCH 55		*1900	*I-DJK 2.4	I-DJK 1.3
6.1 NM		2.4 NM	1.9 NM	1.1 NM
CATEGORY	A	B	C	D
S-ILS 2		1113-1/2	200 (200-1/2)	
S-LOC 2	1900-3/4 987 (1000-3/4)	1900-1 987 (1000-1)	1900-2 1/2	987 (1000-2 1/2)
CIRCLING	1900-1 1/4 986 (1000-1 1/4)	1900-1 1/2 986 (1000-1 1/2)	1900-3	986 (1000-3)
CETAN FIX MINIMUMS				
S-LOC 2	1280-1/2 446 (500-1)	367 (400-1/2)	1280-5/8 626 (700-3/4)	367 (400-5/8)
CIRCLING	1360-1 446 (500-1)	1480-1 566 (600-1)	1540-1 3/4 626 (700-2)	1540-2 626 (700-2)



FAF to MAP 5.4 NM	Knots	60	90	120	150	180
	Min:Seq	5:24	3:36	2:42	2:10	1:48