

WAAS CH 82208 W09A	APP CRS 092°	Rwy Idg TDZE Apt Elev	4201 912 914
----------------------------------------	------------------------	-----------------------------	-----------------------------------------

RNAV (GPS) RWY 9

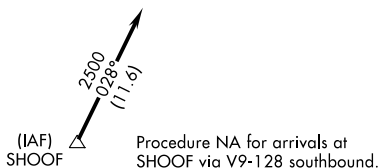
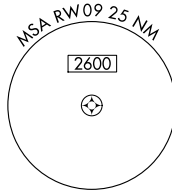
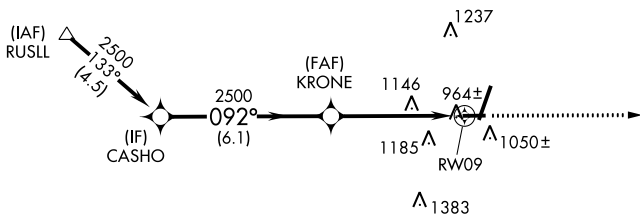
DE KALB TAYLOR MUNI (DKB)

⚠ When local altimeter setting not received, use Aurora altimeter setting and increase all DA 61 feet and all MDA 80 feet; increase all LPV and RNAV/VNAV visibilities, LNAV Cats C/D visibility, and Circling Cats C/D visibility ¼ mile. Baro-VNAV NA when using Aurora altimeter setting. VDP NA when using Aurora altimeter setting. For uncompensated Baro-VNAV systems, LNAV/VNAV NA below -16°C (4°F) or above 47°C (116°F). DME/DME RNP-0.3 NA. Visibility reduction by helicopters NA.

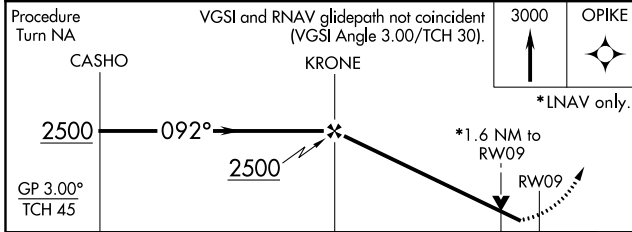
MISSED APPROACH: Climb to 3000 direct OPIKE and hold.

AWOS-3 119.075	CHICAGO APP CON 133.5 349.0	UNICOM 122.7 (CTAF) 0
--------------------------	---------------------------------------	---------------------------------

Procedure NA for arrivals at RUSLL via V172 westbound.



1480



CATEGORY	A	B	C	D
LPV DA	1186-1 274 (300-1)			
LNAV/VNAV DA	1543-2¼ 631 (700-2¼)			
LNAV MDA	1460-1 548 (600-1)	1460-1½ 548 (600-1½)	1460-1¾ 548 (600-1¾)	1460-2 548 (600-2)
CIRCLING	1460-1 546 (600-1)	1480-1 566 (600-1)	1540-1¾ 626 (700-1¾)	1540-2 626 (700-2)

ELEV 914	TDZE 912
----------	----------

REIL Rwy 9, 20 and 27 0
MIRL Rwy 2-20 and 9-27 0

EC-3, 25 FEB 2021 to 25 MAR 2021

EC-3, 25 FEB 2021 to 25 MAR 2021