

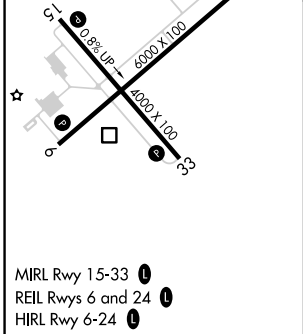
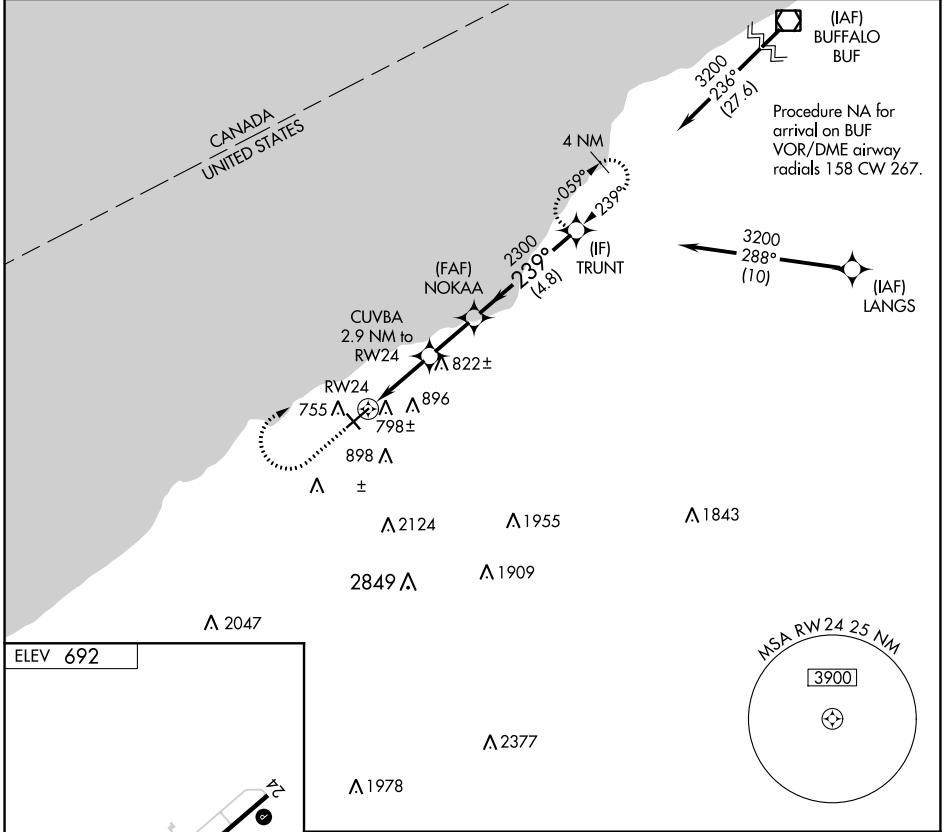
APP CRS 239°	Rwy Idg TDZE Apt Elev	N/A N/A 692
------------------------	-----------------------------	--

RNAV (GPS)-A

CHAUTAUGUA COUNTY/DUNKIRK (DKK)

RNP APCH.	MISSED APPROACH: Climb to 1900 then climbing right turn to 3200 direct TRUNT and hold.
<p>-20°C</p>	<p>⚠ Circling Cat D NA southeast of Rwy 6 and southwest of Rwy 33. ⚠ Circling Rwy 6, 24, 33 NA at night.</p>

ASOS 119.275	BUFFALO APP CON 126.5 317.6	UNICOM 123.075 (CTAF)
------------------------	---------------------------------------	---------------------------------



MIRL Rwy 15-33
REIL Rws 6 and 24
HIRL Rwy 6-24

1900	3200	TRUNT	Visual Segment - Obstacles.	
		TRUNT		
CATEGORY	A	B	C	D
CIRCLING	1200-1 508 (600-1)	1320-1 628 (700-1)	1640-2¾ 948 (1000-2¾)	2140-3 1448 (1500-3)

NE-2, 25 FEB 2021 to 25 MAR 2021

NE-2, 25 FEB 2021 to 25 MAR 2021