

DEL RIO, TEXAS

HI-ILS or LOC/DME RWY 31C

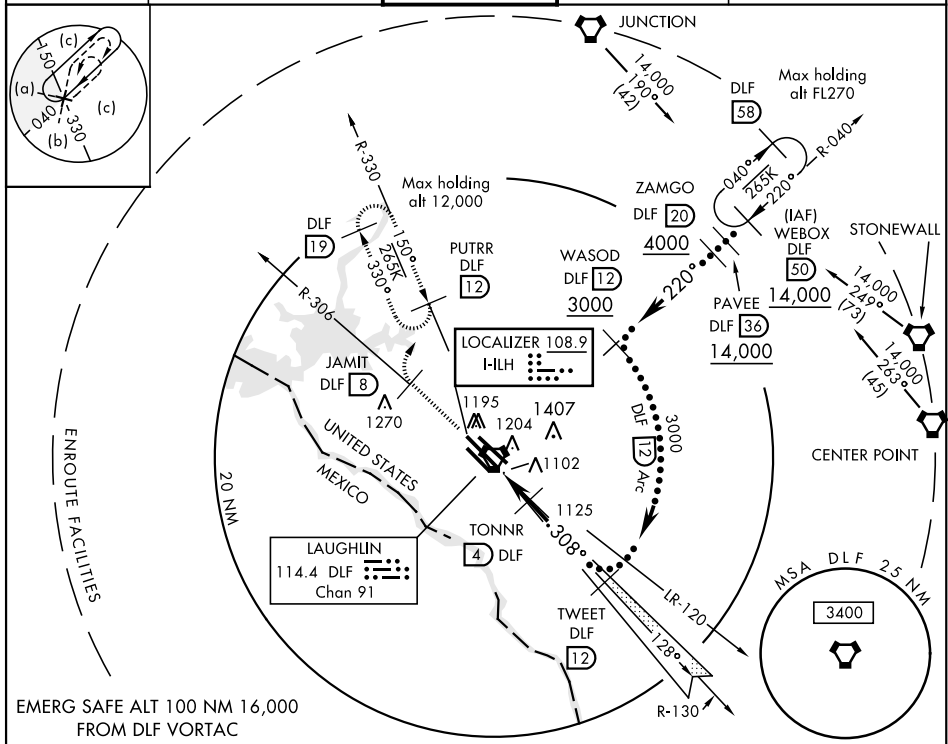
LOC IHLH 108.9	APCH CRS 308°	Rwy Idg 31C 8852 31R 8315
		TDZE 31C 1078 31R 1077
		Arpt Elev 1081

JAL-111 [USAF] LAUGHLIN AFB (KDLF)

✚ * Circling not authorized in sector SW of Rwy 13R-31L.

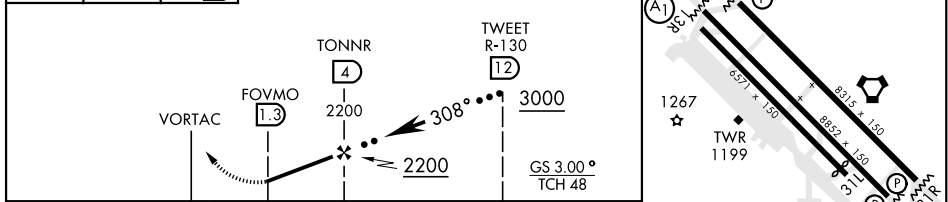
MISSED APPROACH: Climb to 3000 on DLF VORTAC R-306 to 8 DME (JAMIT), then turn right to intercept DLF R-330 to 12 DME (PUTRR) and hold.

ATIS ★ 114.4 269.9	DEL RIO APP CON 119.6 259.1	LAUGHLIN TOWER ★ 125.2 307.375	GND CON 275.8	CLNC DEL 120.5 335.8
------------------------------	---------------------------------------	--	-------------------------	--------------------------------



EMERG SAFE ALT 100 NM 16,000 FROM DLF VORTAC

3000 ↑ DLF R-306	JAMIT DLF 8	PUTRR R-330 DLF 12	VGSI and descent angles not coincidental.	ELEV 1081	TDZE 31C 1078 TDZE 31R 1077
------------------------	-------------	--------------------	---	-----------	--------------------------------



CATEGORY	A	B	C	D	E
S-ILS 31C		1328-7/8	250 (300-7/8)		
S-LOC 31C	1380-1	302 (300-1)	1380-7/8	302 (300-7/8)	
SIDESTEP 31R	1380-1	303 (300-1)	1380-7/8	303 (300-7/8)	
CIRCLING*	1500-1 419 (500-1)	1540-1 459 (500-1)	1700-1 3/4 619 (700-1 3/4)	1700-2 619 (700-2)	1720-2 1/4 639 (700-2 1/4)

Rwy 31L Idg 6241'
MIRL Rwy 13R-31L
HIRL Rwy 13C-31C, 13L-31R

DEL RIO, TEXAS 29°22'N-100°47'W LAUGHLIN AFB (KDLF)
Amdt 4 17AUG17

HI-ILS or LOC/DME RWY 31C

SC-3, 25 FEB 2021 to 25 MAR 2021

SC-3, 25 FEB 2021 to 25 MAR 2021