

11181

LAUGHLIN ONE DEPARTURE (DLF1 • DLF)

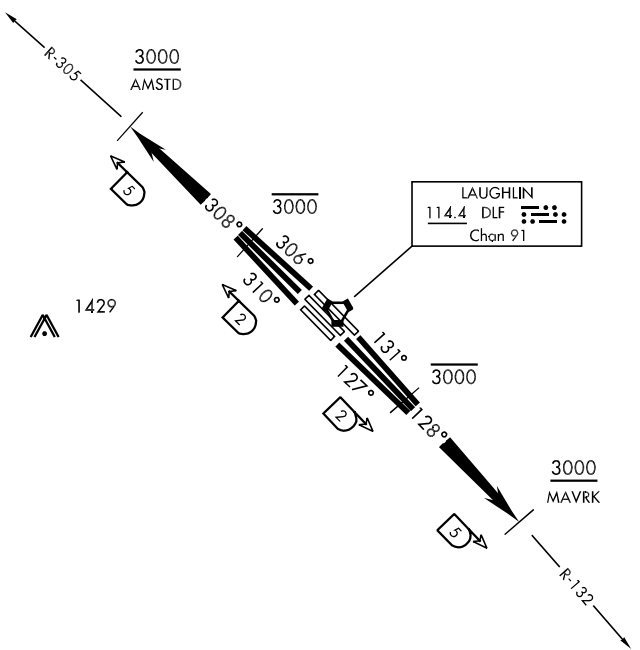
SHL-111 [USAF]

LAUGHLIN AFB (KDLF)
DEL RIO, TEXAS

ATIS ★ 114.4 269.9
CLNC DEL
120.5 335.8
GND CON
275.8
LAUGHLIN TOWER ★
125.2 307.375
DEL RIO DEP CON
119.6 296.7

Rwy	Knots	60	120	180	240	300	360
31C/R Ⓞ	V/V(fpm)	470	940	1410	1880	2350	2810
13C Ⓞ	V/V(fpm)	440	880	1320	1760	2200	2640
13L Ⓞ	V/V(fpm)	450	890	1330	1770	2210	2650
13R Ⓞ	V/V(fpm)	410	810	1210	1620	2020	2420

Ⓞ ATC Climb Rate to 5 DME



DEPARTURE ROUTE DESCRIPTION
(MAVRK Tracks)

TAKE-OFF RWY 13C: Climb on track 128°, thence. . .

TAKE-OFF RWY 13L: Climb on track 131°, thence. . .

TAKE-OFF RWY 13R: Climb on track 127°, thence. . .

Intercept DLF VORTAC R-132 to DLF 5 DME (MAVRK), cross DLF 2 DME at or below 3000, cross DLF 5 DME (MAVRK) at or above 3000, then as directed by ATC.

(AMSTD Tracks)

TAKE-OFF RWY 31C: Climb on track 308°, thence. . .

TAKE-OFF RWY 31L: Climb on track 310°, thence. . .

TAKE-OFF RWY 31R: Climb on track 306°, thence. . .

Intercept DLF VORTAC R-305 to DLF 5 DME (AMSTD), cross DLF 2 DME at or below 3000, cross DLF 5 DME (AMSTD) at or above 3000, then as directed by ATC.

LAUGHLIN ONE DEPARTURE (DLF1 • DLF)

DEL RIO, TEXAS
LAUGHLIN AFB (KDLF)

SC-3, 25 FEB 2021 to 25 MAR 2021

SC-3, 25 FEB 2021 to 25 MAR 2021