

APCH CRS 340°	Rwy Idg TDZE Arpt Elev	N/A N/A 1081
-------------------------	------------------------------	---------------------------

AL-111 (USAF)

LAUGHLIN AFB (KDLF)

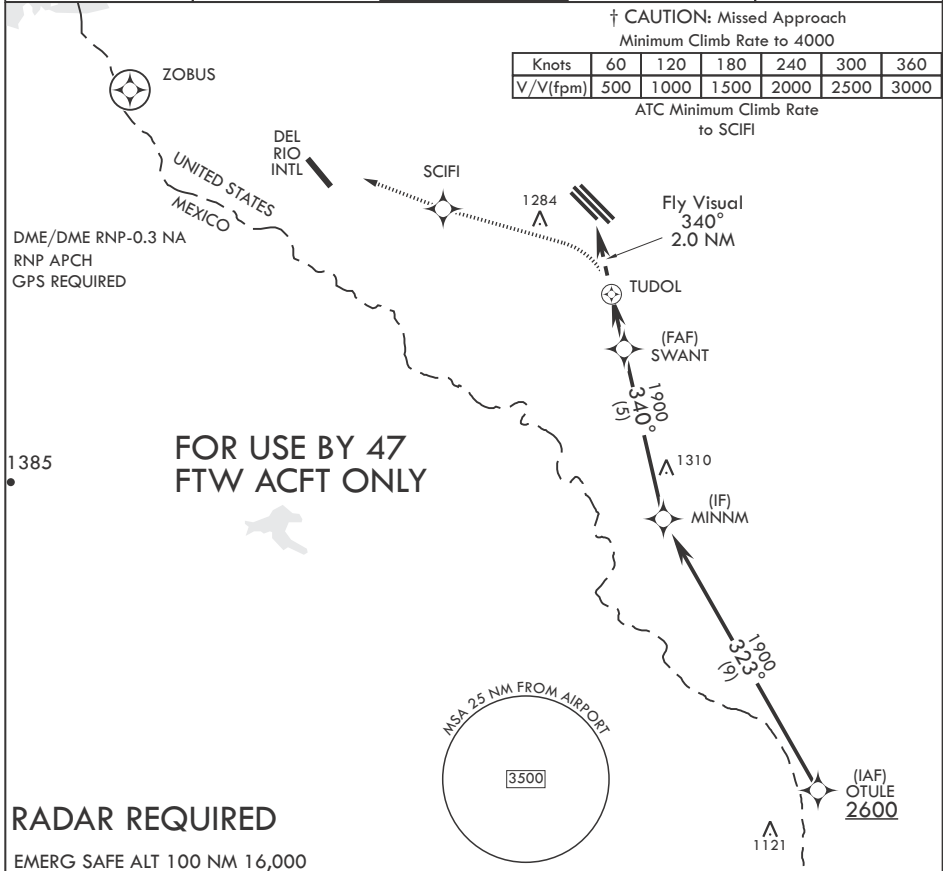
† * Circling not authorized in sector NE of Rwy 13R-31L. † MISSED APPROACH: Climbing left turn to 4000 direct ZOBUS, cross SCIFI at 4000, expect radar vectors.

ATIS* 114.4 269.9	DEL RIO APP CON 119.6 259.1	TOWER* 125.2 307.375	GND CON 275.8	CLNC DEL 120.5 335.8
-----------------------------	---------------------------------------	--------------------------------	-------------------------	--------------------------------

† CAUTION: Missed Approach
Minimum Climb Rate to 4000

Knots	60	120	180	240	300	360
V/V(fpm)	500	1000	1500	2000	2500	3000

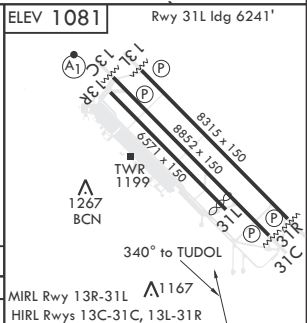
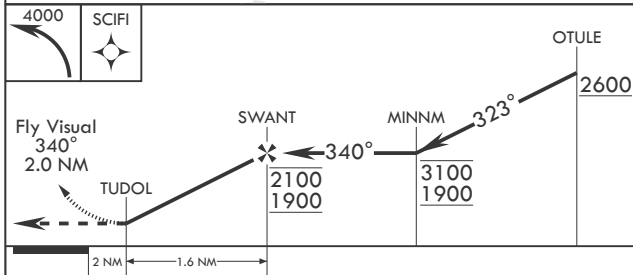
ATC Minimum Climb Rate
to SCIFI



**FOR USE BY 47
FTW ACFT ONLY**

RADAR REQUIRED

EMERG SAFE ALT 100 NM 16,000



CATEGORY	A	B	C	D
CIRCLING*	1600-3	519	(1000-3)	NA

SC-3, 25 FEB 2021 to 25 MAR 2021

SC-3, 25 FEB 2021 to 25 MAR 2021