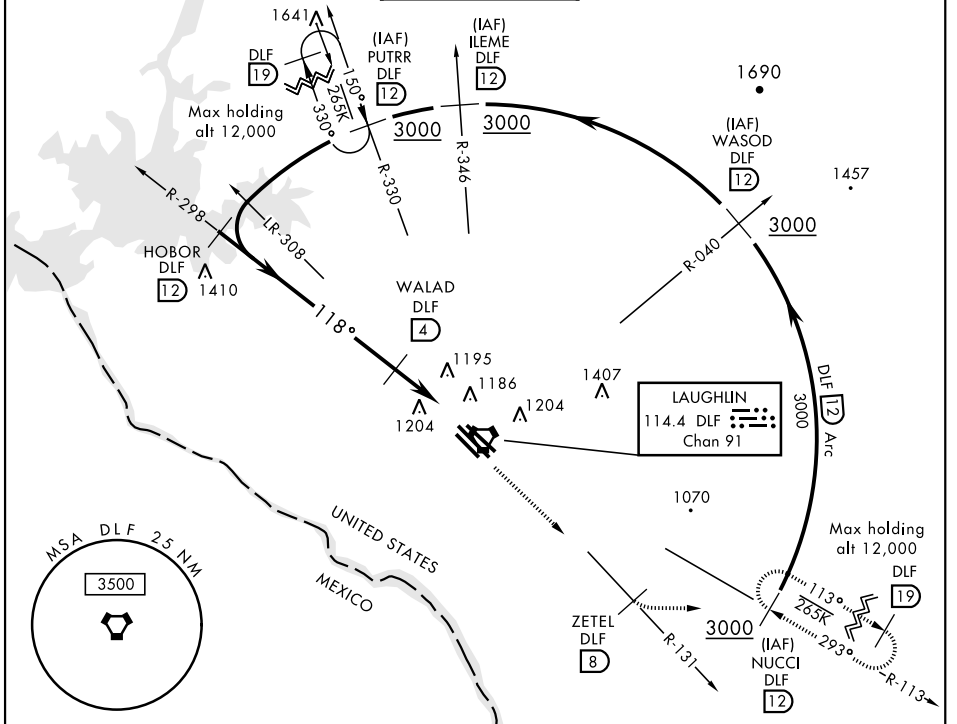


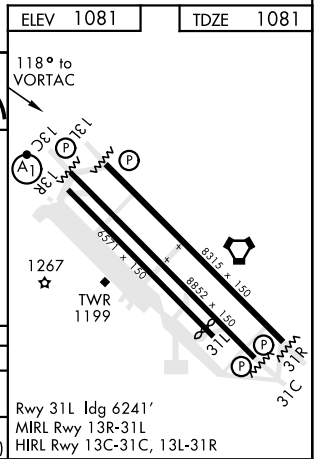
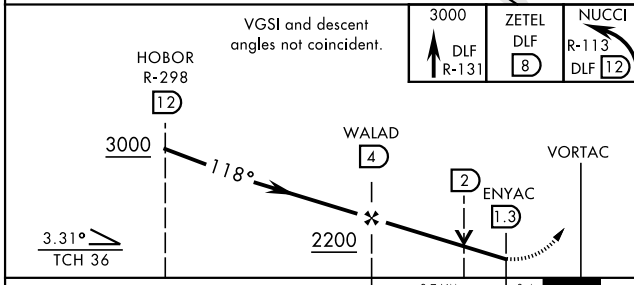
VOR/DME RWY 13C

VORTAC DLF 114.4 Chan 91	APCH CRS 118°	Rwy ldg 8852 TDZE 1081 Arpt Elev 1081	AL-111 [USAF]	LAUGHLIN AFB (KDLF)
▼* When ALS inop, increase CAT AB RVR to 55 and vis to 1 mile, CAT CDE RVR to 60 and vis to 1 1/8 miles. ** Circling not authorized in sector SW of Rwy 13R-31L.		ALSIF-1 (A1)	MISSED APPROACH: Climb to 3000 on DLF VORTAC R-131 to 8 DME (ZETEL), then turn left to intercept DLF R-113 to 12 DME (NUCCI) and hold.	
ATIS ★ 114.4 269.9	DEL RIO APP CON 119.6 259.1	LAUGHLIN TOWER ★ 125.2 307.375	GND CON 275.8	CLNC DEL 120.5 335.8



EMERG SAFE ALT 100 NM 16,000 FROM DLF VORTAC

ELEV 1081	TDZE 1081
-----------	-----------



CATEGORY	A	B	C	D	E
S-13C *	1480/24 399 (400-1/2)		1480/40	399	(400-3/4)
CIRCLING **	1500-1 419 (500-1)	1540-1 459 (500-1)	1700-1 3/4 619 (700-1 3/4)	1700-2 619 (700-2)	1720-2 1/4 639 (700-2 1/4)

Rwy 31L ldg 6241'
MRL Rwy 13R-31L
HIRL Rwy 13C-31C, 13L-31R

VOR/DME RWY 13C

SC-3, 25 FEB 2021 to 25 MAR 2021

SC-3, 25 FEB 2021 to 25 MAR 2021