

DEL RIO, TEXAS

VOR/DME RWY 31C

VORTAC DLF 114.4 Chan 91	APCH CRS 322°	Rwy ldg 8852 TDZE 1078 Arprt Elev 1081
--	-------------------------	---

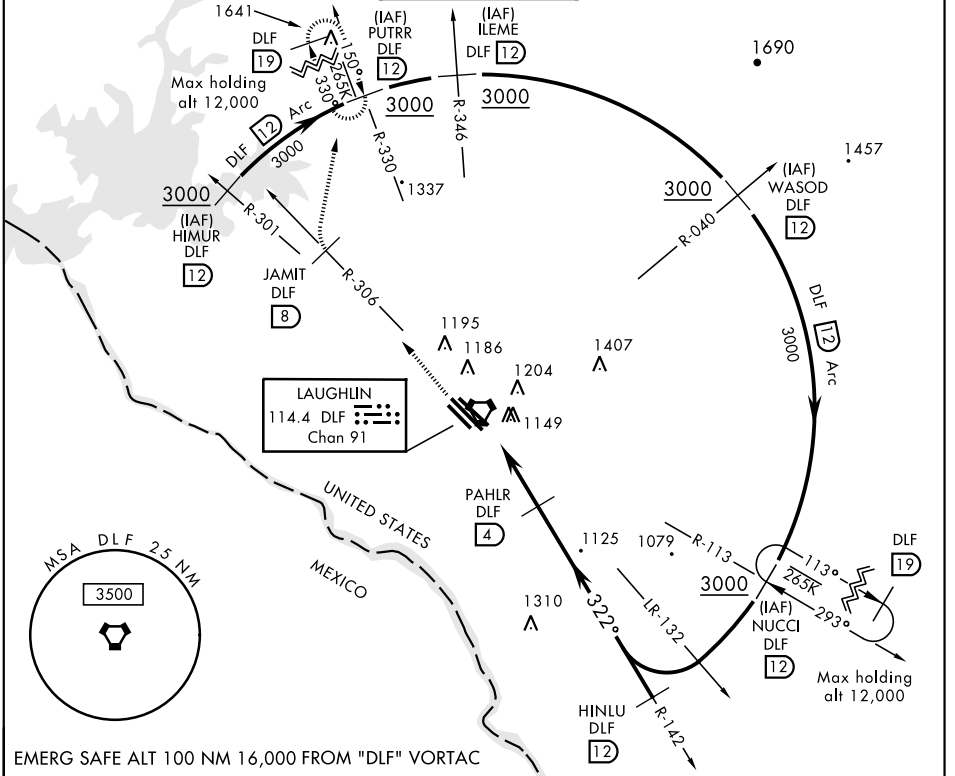
AL-111 [USAF]

LAUGHLIN AFB (KDLF)

⚠ *Circling not authorized in sector SW of Rwy 13R-31L.

MISSED APPROACH: Climb to 3000 on DLF VORTAC R-306 to 8 DME (JAMIT), then turn right to intercept DLF R-330 to 12 DME (PUTRR), and hold.

ATIS ★ 114.4 269.9	DEL RIO APP CON 119.6 259.1	LAUGHLIN TOWER ★ 125.2 307.375	GND CON 275.8	CLNC DEL 120.5 335.8
------------------------------	---------------------------------------	--	-------------------------	--------------------------------



EMERG SAFE ALT 100 NM 16,000 FROM "DLF" VORTAC

ELEV 1081	TDZE 1078	3000 DLF R-306	JAMIT R-306 DLF 8	PUTRR R-330 DLF 12	HINLU R-142 3000
CATEGORY	A	B	C	D	E
S-31C	1420-1		342	(400-1)	
C CIRCLING*	1500-1 419 (500-1)	1540-1 459 (500-1)	1700-1¾ 619(700-1¾)	1700-2 619 (700-2)	1720-2¼ 639(700-2¼)

DEL RIO, TEXAS
Amdt 3 16JUL20

29°22'N-100°47'W

LAUGHLIN AFB (KDLF)

VOR/DME RWY 31C

SC-3, 25 FEB 2021 to 25 MAR 2021

SC-3, 25 FEB 2021 to 25 MAR 2021