

(WEBOX • WEBOX4)
WEBOX FOUR ARRIVAL

ST-111 [USAF]

LAUGHLIN AFB
 DEL RIO, TEXAS

ATIS ★ 114.4 269.9
 DEL RIO APP CON
 119.6 259.1
 LAUGHLIN TOWER ★
 125.2 307.375
 GND CON
 275.8

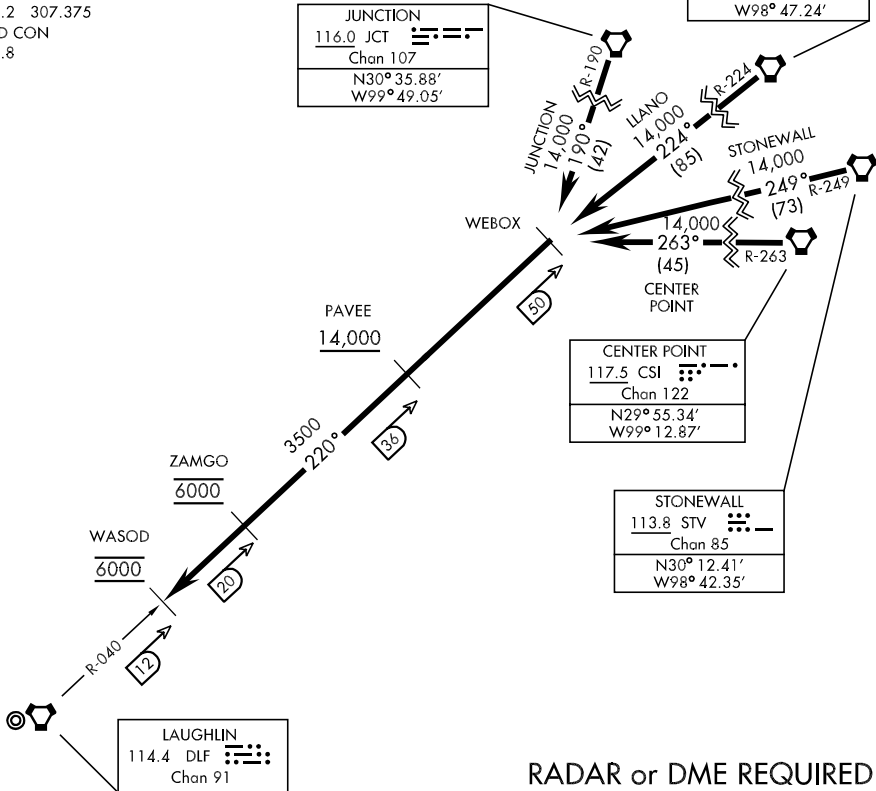
LLANO	108.2 LLO	
	Chan 19	
	N30° 47.78'	
	W98° 47.24'	

JUNCTION	116.0 JCT	
	Chan 107	
	N30° 35.88'	
	W99° 49.05'	

CENTER POINT	117.5 CSI	
	Chan 122	
	N29° 55.34'	
	W99° 12.87'	

STONEWALL	113.8 STV	
	Chan 85	
	N30° 12.41'	
	W98° 42.35'	

LAUGHLIN	114.4 DLF	
	Chan 91	



RADAR or DME REQUIRED

ARRIVAL ROUTE DESCRIPTION

JUNCTION Transition (JCT.WEBOX4): From over JCT VORTAC via JCT R-190 to WEBOX. Thence...

LLANO Transition (LLO.WEBOX4): From over LLO VORTAC via LLO R-224 to WEBOX. Thence...

STONEWALL Transition (STV.WEBOX4): From over STV VORTAC via STV R-249 to WEBOX. Thence...

CENTER POINT Transition (CSI.WEBOX4): From over CSI VORTAC via CSI R-263 to WEBOX. Thence...

...From over DLF R-040/50 (WEBOX) via DLF R-040 to DLF R-040/12 (WASOD).
 Expect vectors for an instrument approach to runway in use.

WEBOX FOUR ARRIVAL (WEBOX • WEBOX4)

DEL RIO, TEXAS
 LAUGHLIN AFB

SC-3, 25 FEB 2021 to 25 MAR 2021

SC-3, 25 FEB 2021 to 25 MAR 2021