

LOC I-DNN <b>110.9</b>	APP CRS <b>140°</b>	Rwy Idg TDZE Apt Elev	<b>5496</b> <b>709</b> <b>709</b>
---------------------------	------------------------	-----------------------------	---

# ILS or LOC RWY 14

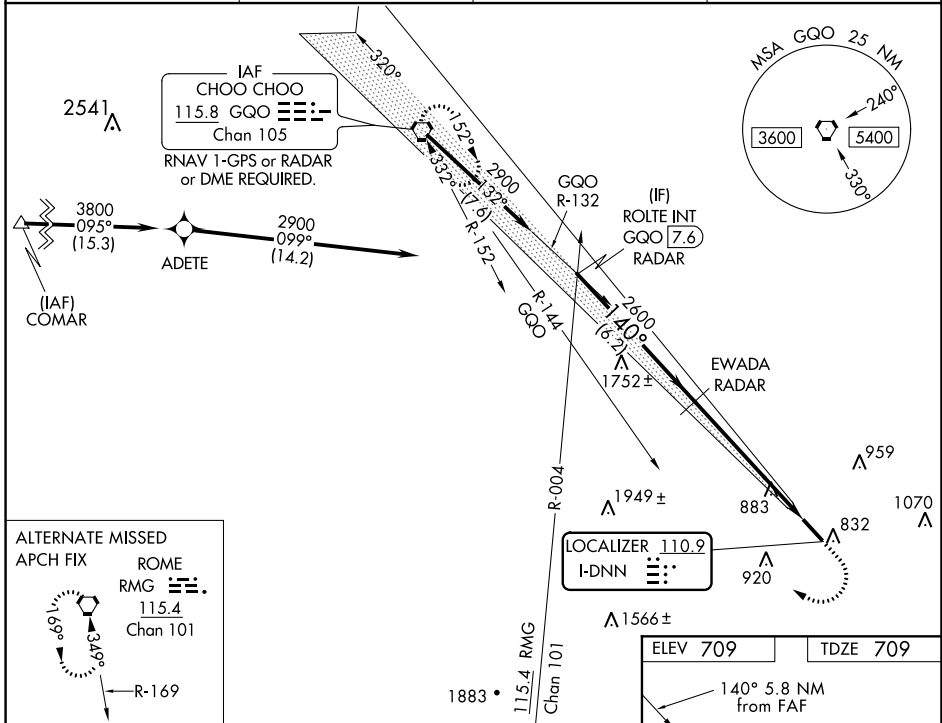
DALTON MUNI (DNN)

**RADAR required to define EWADA. From COMAR: RNAV 1-GPS required.**

**⚠ Autopilot coupled approach NA below 1200 MSL. Circling Rwy 32 NA at night. DME from GQO VORTAC. Simultaneous reception of I-DNN and GQO DME required. Rwy 14 helicopter visibility reduction below 3/4 SM NA. Inop table does not apply to S-ILS 14. For inop ALS, increase S-LOC 14 Cat A/B visibility to 1 SM and Cat C/D to 1/2 SM.**

**MALSR** MISSED APPROACH: Climb to 1700 then climbing right turn to 3100 on heading 300° and GQO VORTAC R-144 to GQO VORTAC and hold.

AWOS-3PT <b>127.65</b>	CHATTANOOGA APP CON ★ <b>125.1 379.1</b>	CLNC DEL <b>120.25</b>	UNICOM <b>122.975 (CTAF) 0</b>
---------------------------	---	---------------------------	-----------------------------------



VGSI and ILS glidepath not coincident (VGSI Angle 3.00/TCH 55).

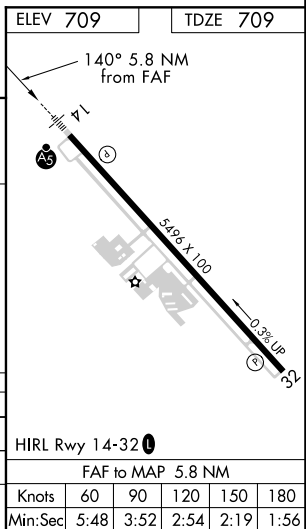
1700	3100	GQO R-144	GQO
↑	hdg 300°		

**ROLTE INT GQO [7.6] RADAR**  
2900  
GS 3.00° TCH 50

**EWADA RADAR**  
2600

6.2 NM      5.8 NM

CATEGORY	A	B	C	D
S-ILS 14	959-3/4 250 (300-3/4)			
S-LOC 14	1320-3/4	611 (700-3/4)	1320-1 3/8	611 (700-1 3/8)
<b>CIRCLING</b>	1320-1	611 (700-1)	1320-1 3/4	1420-2 1/4 611 (800-2 1/4)



SE-4, 25 FEB 2021 to 25 MAR 2021

SE-4, 25 FEB 2021 to 25 MAR 2021