


WAAS CH <b>65801</b> <b>W14A</b>	APP CRS <b>140°</b>	Rwy Idg TDZE Apt Elev	<b>5496</b> <b>709</b> <b>709</b>
--	------------------------	-----------------------------	---

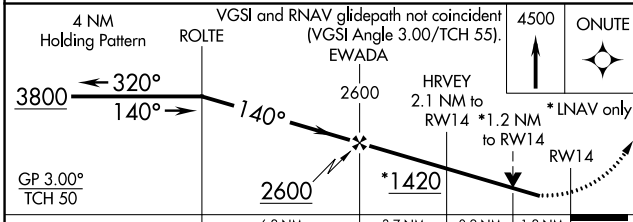
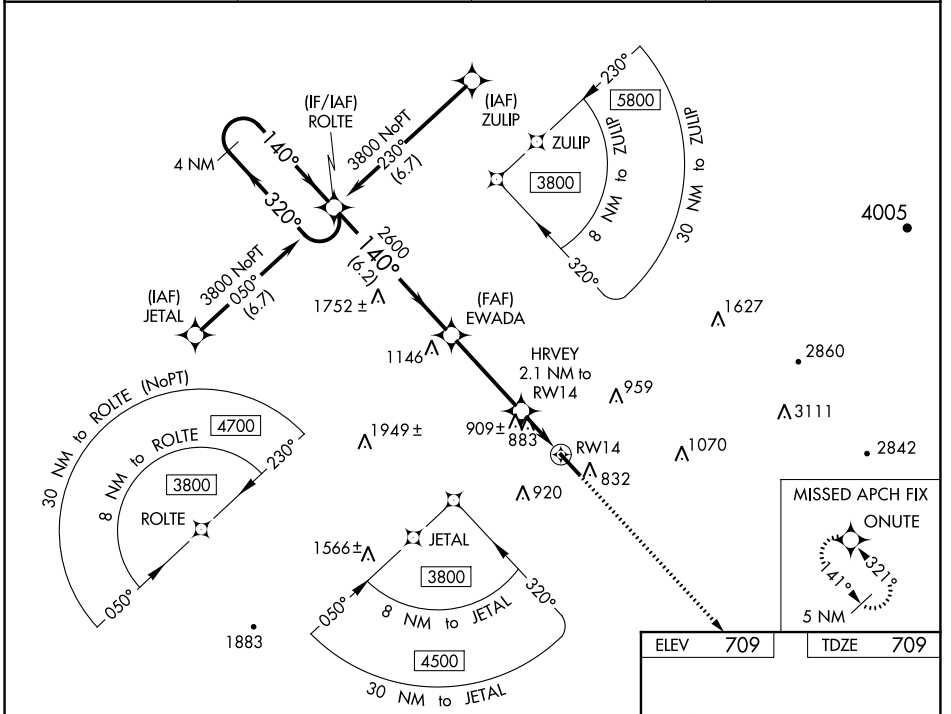
# RNAV (GPS) RWY 14

DALTON MUNI (DNN)

**⚠** Circling to Rwy 32 NA at night. For uncompensated Baro-VNAV systems, LNAV/VNAV NA below -16°C (4°F) or above 54°C (130°F).  
**⚠** DME/DME RNP-0.3 NA. Rwy 14 helicopter visibility reduction below 3/4 SM NA. Inop table does not apply to LPV.

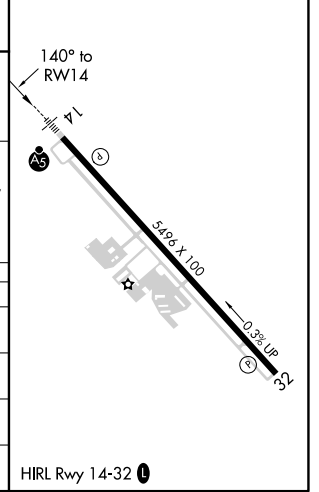
MALSR  MISSED APPROACH: Climb to 4500 direct ONUTE and hold, continue climb-in-hold to 4500.

AWOS-3PT <b>127.65</b>	CHATTANOOGA APP CON ★ <b>125.1 379.1</b>	CLNC DEL <b>120.25</b>	UNICOM <b>122.975 (CTAF) 0</b>
---------------------------	---	---------------------------	-----------------------------------



ELEV	<b>709</b>	TDZE	<b>709</b>
------	------------	------	------------

CATEGORY	A	B	C	D
LPV DA	959-3/4		250 (300-3/4)	
LNAV/VNAV DA	1173-1 1/8		464 (500-1 1/8)	
LNAV MDA	1160-3/4	451 (500-3/4)	1160-7/8	451 (500-7/8)
<b>C</b> CIRCLING	1220-1	511 (600-1)	1260-1 1/2	1420-2 1/4
			551 (600-1 1/2)	711 (800-2 1/4)



SE-4, 25 FEB 2021 to 25 MAR 2021

SE-4, 25 FEB 2021 to 25 MAR 2021