


WAAS CH 58004 W21A	APP CRS 210°	Rwy Idg 6006 TDZE 697 Apt Elev 697
--	------------------------	---

RNAV (GPS) RWY 21

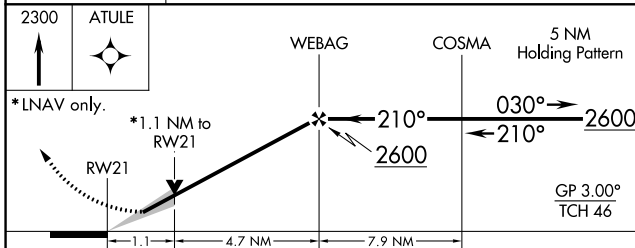
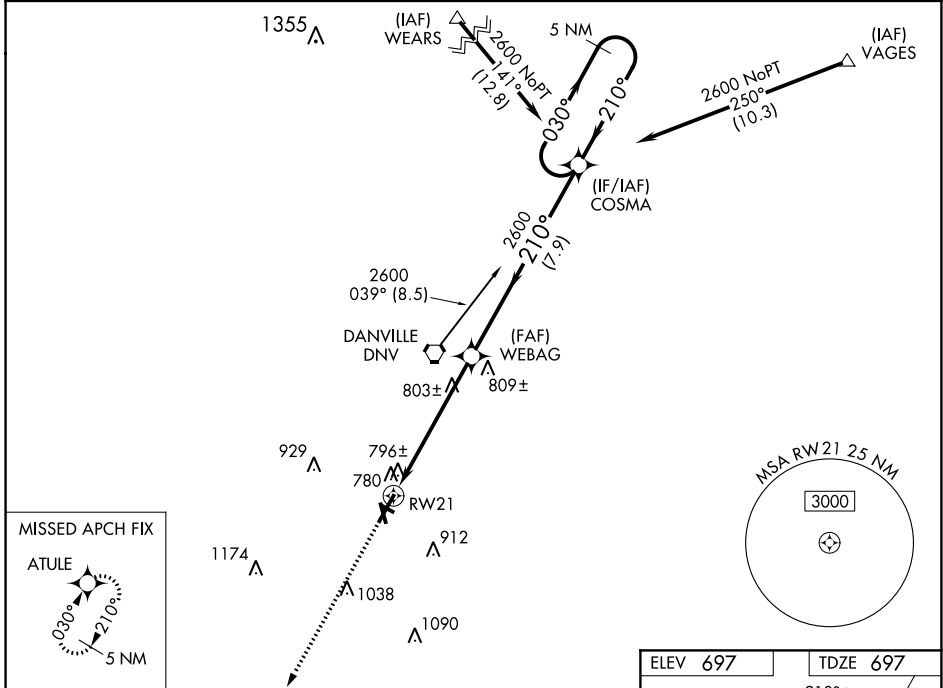
VERMILION RGNL (DNL)

⚠ If local altimeter setting not received, use University of Illinois-Willard altimeter setting and increase all DAs/MDAs 100 feet. Baro-VNAV and VDP NA when using University of Illinois-Willard altimeter setting. For uncompensated Baro-VNAV systems, LNAV/VNAV NA below -16°C (4°F) or above 47°C (116°F). For inop MALSR, increase LPV all Cats visibility to 1 mile and LNAV Cat D visibility to 1½ mile. DME/DME RNP-0.3 NA.

MALSR 

MISSED APPROACH: Climb to 2300 direct ATULE and hold.

AWOS-3 119.275	CHAMPAIGN APP CON ★ 121.35 285.65	CLNC DEL 121.7	UNICOM 122.7 (CTAF) 0
--------------------------	---	--------------------------	---------------------------------



ELEV 697	TDZE 697
----------	----------

210° to RW21

210° 210°

91 718

3999 x 100 600 x 100 2500 x 150

0.3% UP 0.3% UP 0.8% 0.6% 0.6% UP 34

HIRL Rwy 3-21 **0**

MIRL Rwy 16-34 **0**

REIL Rwy 16 and 34 **0**

CATEGORY	A	B	C	D
LPV DA	990-½	293 (300-½)		
LNAV/VNAV DA	1069-¾	372 (400-¾)		
LNAV MDA	1080-½	383 (400-½)	1080-1	383 (400-1)
CIRCLING	1160-1	463 (500-1)	1160-1½	1260-2
			463 (500-1½)	563 (600-2)

EC-3, 25 FEB 2021 to 25 MAR 2021

EC-3, 25 FEB 2021 to 25 MAR 2021