

LOC I-GVK <b>111.7</b>	APP CRS <b>015°</b>	Rwy Idg <b>7571</b>
		TDZE <b>754</b>
		Apt Elev <b>759</b>

# ILS or LOC RWY 2L

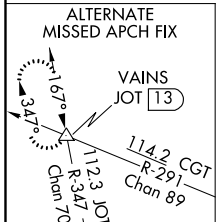
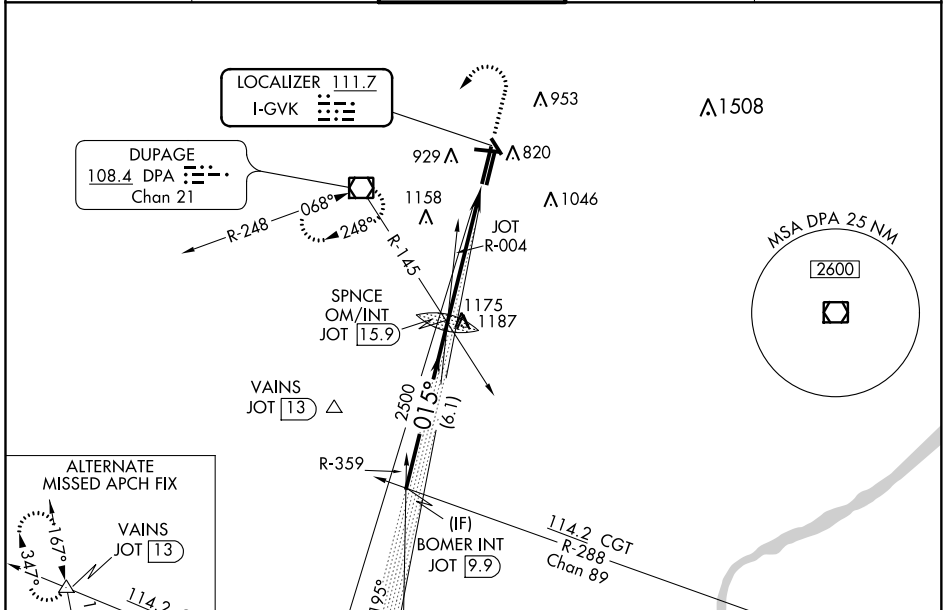
DUPAGE (DPA)

**⚠** Circling Rwy 15, 28, 33 NA at night. When local altimeter setting not received, use Aurora altimeter setting and increase all DA 37 feet and all MDA 40 feet. For inop ALS, increase S-LOC 2L Cat C/D visibility to 2 SM. For inop ALS when using Aurora altimeter setting, increase S-LOC 2L Cat C/D visibility to 2½ SM.

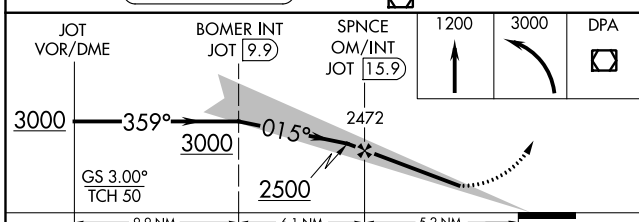
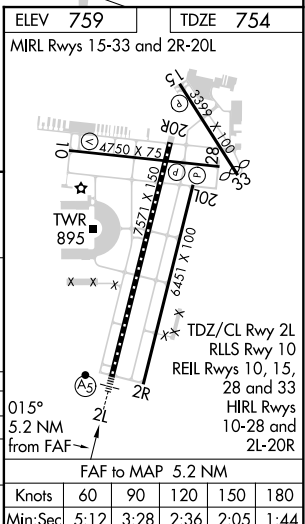


**MISSED APPROACH:** Climb to 1200 then climbing left turn to 3000 direct DPA VOR/DME and hold, continue climb-in-hold to 3000.

ATIS <b>132.075</b>	CHICAGO APP CON <b>133.5 349.0</b>	DUPAGE TOWER <b>120.9 257.8</b>	GND CON <b>121.8</b>	CLNC DEL <b>119.75</b>
------------------------	---------------------------------------	------------------------------------	-------------------------	---------------------------



ELEV 759	TDZE 754
MRL Rwy 15-33 and 2R-20L	



CATEGORY	A	B	C	D
S-ILS 2L	954-½ 200 (200-½)			
S-LOC 2L	1500-½ 746 (800-½)	1500-¾ 746 (800-¾)	1500-1¾ 746 (800-1¾)	746 (800-1¾)
<b>C</b> CIRCLING	1500-1 741 (800-1)	1500-1¼ 741 (800-1¼)	1500-2¼ 741 (800-2¼)	1500-2½ 741 (800-2½)

EC-3, 25 FEB 2021 to 25 MAR 2021

EC-3, 25 FEB 2021 to 25 MAR 2021