

LOC I-DRT 111.9 Chan 56	APP CRS 132°	Rwy Idg TDZE Apt Elev	6000 1002 1002
---	------------------------	-----------------------------	---

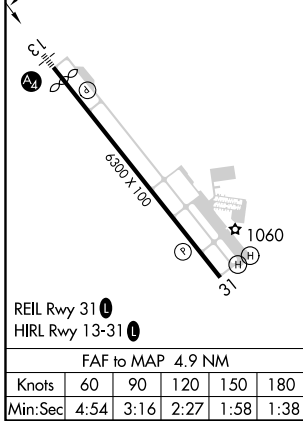
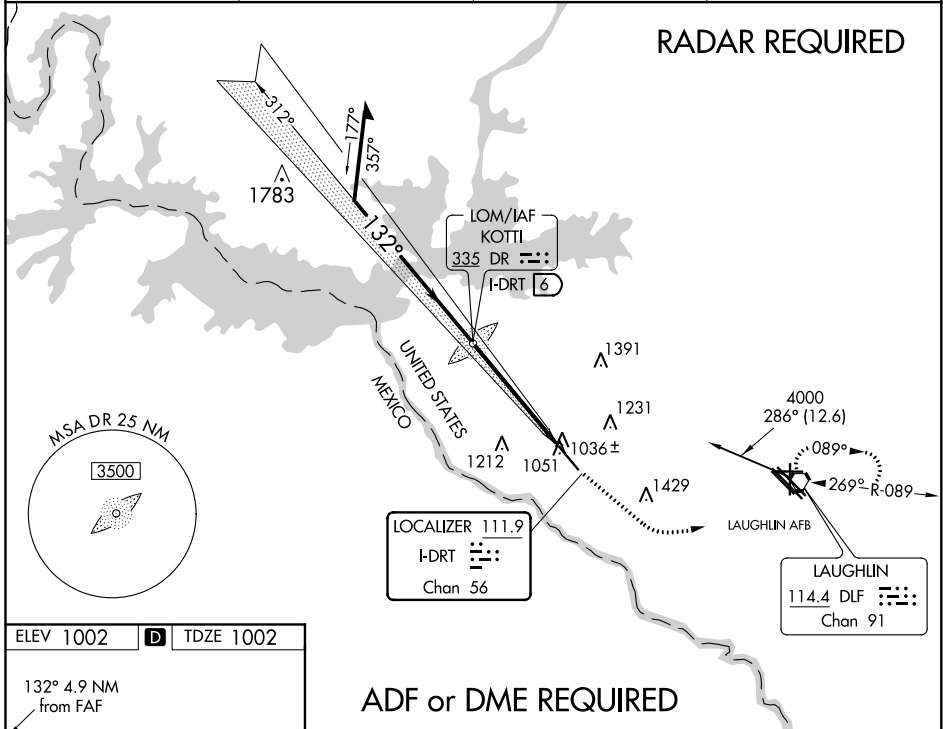
ILS or LOC RWY 13

DEL RIO INTL (DRT)

NA Circling NA for Cat D SW of Rwy 13-31. When local altimeter setting not received, use Laughlin AFB altimeter setting and increase all DAs 30 feet, all MDAs 40 feet, increase S-LOC 13 Cat D and Circling Cat D visibility 1/4 mile. VDP NA when using Laughlin AFB altimeter setting.

MALS MISSED APPROACH: Climb to 2000 via heading 122° then climbing left turn to 4000 direct DLF VORTAC and hold. Continue climb-in-hold to 4000.

ASOS 118.525	DEL RIO APP CON ★ 119.6 259.1	CLNC DEL 120.5	UNICOM 122.8 (CTAF)
------------------------	---	--------------------------	-------------------------------



Remain within 10 NM	DR KOTTI LOM I-DRT 6		2000 hdg 122°	4000	DLF
	3200	2700	2673	I-DRT 2.3	I-DRT 1.2
GS 3.00° TCH 48	3.7 NM		1.2		
CATEGORY	A	B	C	D	
S-ILS 13	1202-3/4 200 (200-3/4)				
S-LOC 13	1420-1/2	418 (500-1/2)	1420-3/4	418 (500-3/4)	
CIRCLING	1440-1 438 (500-1)	1460-1 458 (500-1)	1560-1 1/2 558 (600-1 1/2)	1640-2 638 (700-2)	

DEL RIO, TEXAS
Orig-A 28FEB19

29°22'N-100°56'W

DEL RIO INTL (DRT)

ILS or LOC RWY 13

SC-3, 25 FEB 2021 to 25 MAR 2021

SC-3, 25 FEB 2021 to 25 MAR 2021