

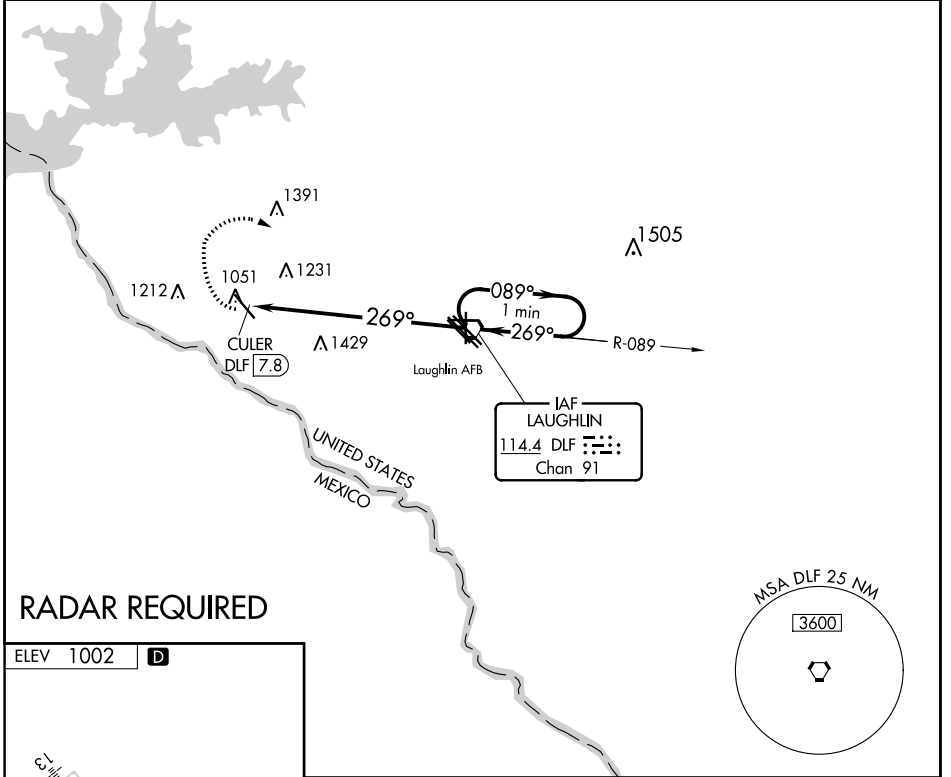
VORTAC DLF 114.4 Chan 91	APP CRS 269°	Rwy Idg TDZE Apt Elev 1002	N/A N/A 1002
--	------------------------	--	---------------------------

VOR-A
DEL RIO INTL (D.R.T)

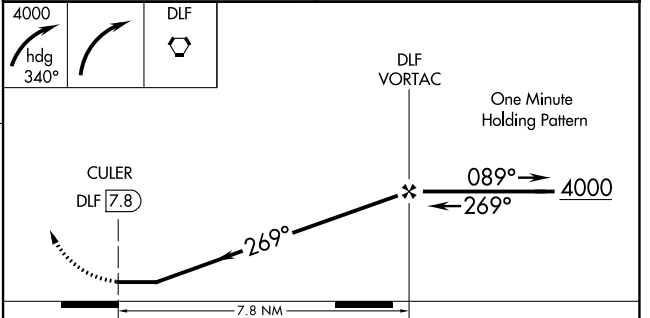
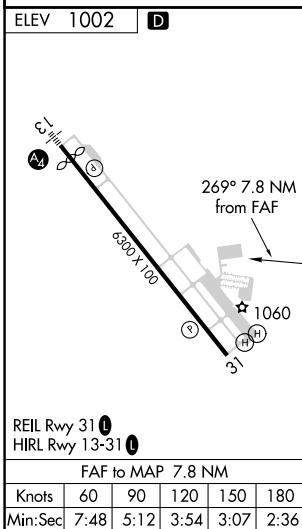
⚠ Circling NA for Cat D SW of Rwy 13-31. If local altimeter setting not received, use Laughlin AFB altimeter setting and increase all MDAs 40 feet.

⚠ MISSED APPROACH: Climbing right turn to 4000 via heading 340° then right turn direct DLF VORTAC and hold.

ASOS 118.525	DEL RIO APP CON * 119.6 259.1	CLNC DEL 120.5	UNICOM 122.8 (CTAF) 📻
------------------------	---	--------------------------	--



RADAR REQUIRED



	FAF to MAP 7.8 NM					
	Knots	60	90	120	150	180
Min:Sec	7:48	5:12	3:54	3:07	2:36	

CATEGORY	A	B	C	D
📻 CIRCLING	1780-1 778 (800-1)	1780-1¼ 778 (800-1¼)	1780-2¼ 778 (800-2¼)	1780-2½ 778 (800-2½)

SC-3, 25 FEB 2021 to 25 MAR 2021

SC-3, 25 FEB 2021 to 25 MAR 2021