

WAAS CH 86704 W32A	APP CRS 318°	Rwy Idg TDZE Apt Elev	5201 1372 1396
--	------------------------	-----------------------------	---

RNAV (GPS) RWY 32

DETROIT LAKES-WETHING FIELD (DTL)

RNP APCH.

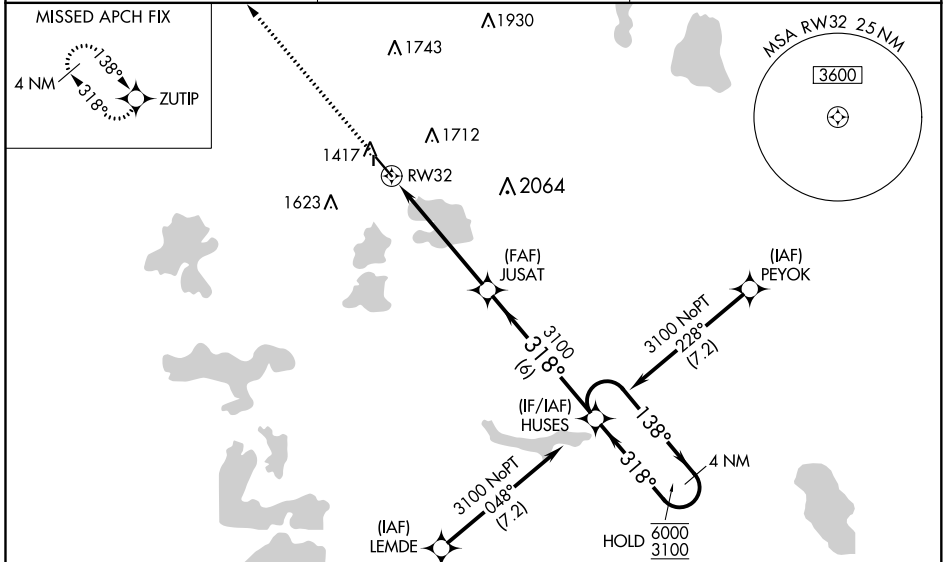
▼ Circling NA to Rws 18 and 36. Baro-VNAV and VDP NA when using Park Rapids altimeter setting. Inop table does not apply to LPV. For uncompensated Baro-VNAV systems, LNAV/VNAV NA below -17°C or above 54°C. When local altimeter setting not received, use Park Rapids altimeter setting: increase LPV DA to 1657 feet; increase LNAV/VNAV DA to 1741 feet; increase all MDA 100 feet and visibility CATs C and D ¼ SM. For inop ALS, increase LNAV/VNAV all Cats visibility to ¾ SM. For inop ALS, when using Park Rapids altimeter setting, increase LPV all Cats visibility to ¾ SM and LNAV Cats C and D to 1¼ SM.

MALSF

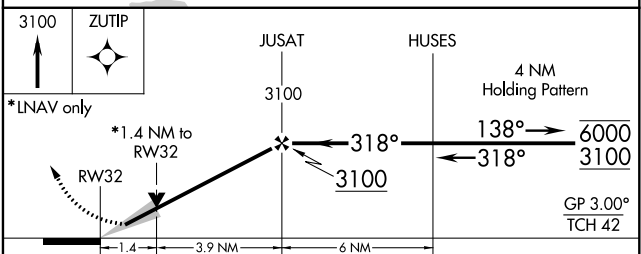
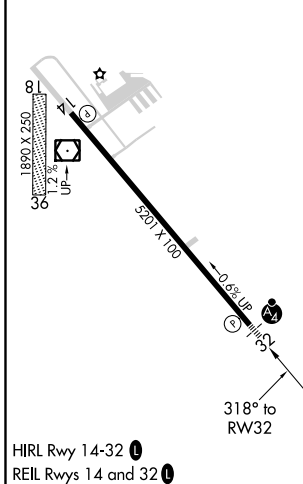


MISSED APPROACH: Climb to 3100 direct ZUTIP and hold.

AWOS-3 119.075	MINNEAPOLIS CENTER 126.1 269.2	UNICOM 122.8 (CTAF)
--------------------------	--	-------------------------------



ELEV 1396	TDZE 1372
-----------	-----------



CATEGORY	A	B	C	D
LPV DA		1572-¾	200 (200-¾)	
LNAV/VNAV DA		1656-⅞	284 (300-⅞)	
LNAV MDA	1860-¾	488 (500-¾)	1860-1⅞	488 (500-1⅞)
C CIRCLING	1860-1	464 (500-1)	2080-2 684 (700-2)	2140-2½ 744 (800-2½)

NC-1, 25 FEB 2021 to 25 MAR 2021

NC-1, 25 FEB 2021 to 25 MAR 2021