

VOR/DME DTL <b>111.2</b> Chan <b>49</b>	APP CRS <b>144°</b>	Rwy Idg TDZE Apt Elev	<b>5201</b> <b>1393</b> <b>1396</b>
---	------------------------	-----------------------------	---

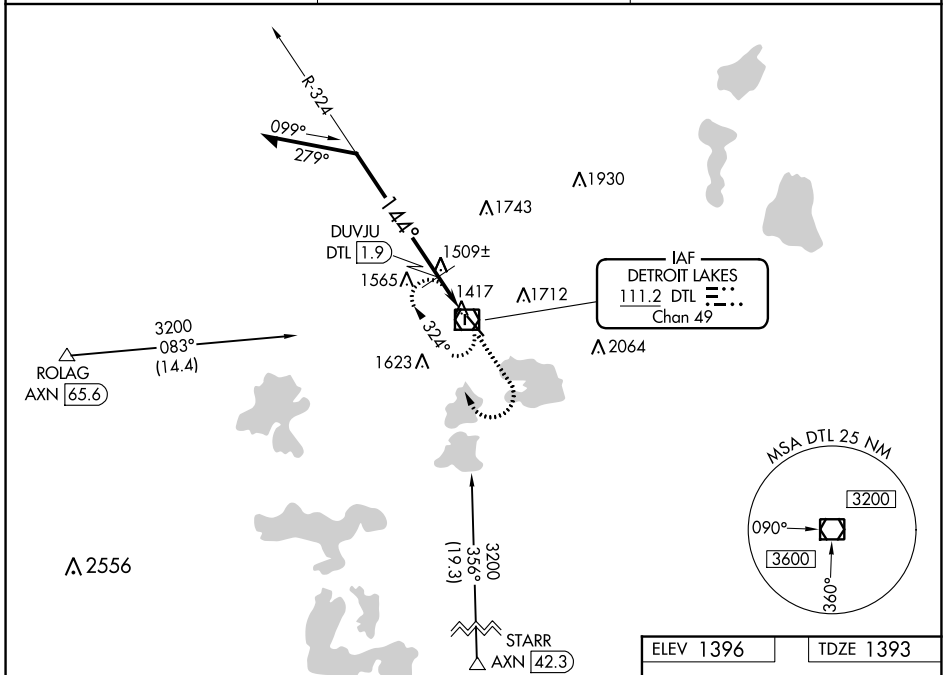
# VOR RWY 14

DETROIT LAKES-WETHING FIELD (DTL)

**NA** Circling NA to Rwy's 18 and 36. VDP NA with Park Rapids altimeter setting. When local altimeter setting not received, use Park Rapids altimeter setting and increase all MDA 100 feet and visibility Cats C and D ¼ SM. DUVJU fix minimums: increase visibility Cats C and D ¾ SM.

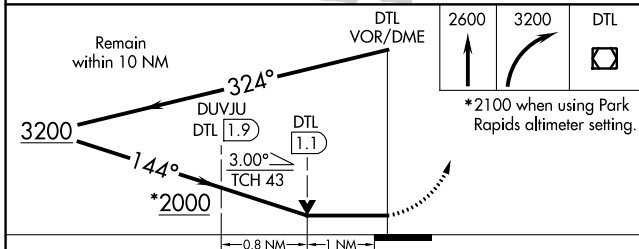
MISSED APPROACH: Climb to 2600 then climbing right turn to 3200 direct DTL VOR/DME and hold, continue climb-in-hold to 3200.

AWOS-3 <b>119.075</b>	MINNEAPOLIS CENTER <b>126.1 269.2</b>	UNICOM <b>122.8 (CTAF)</b>
--------------------------	--	-------------------------------

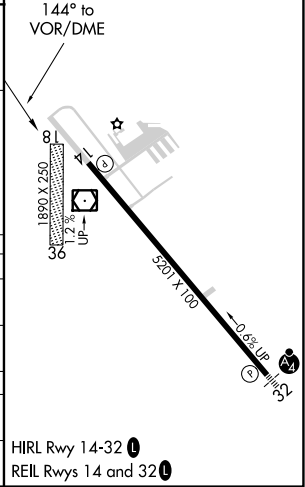


NC-1, 25 FEB 2021 to 25 MAR 2021

NC-1, 25 FEB 2021 to 25 MAR 2021



ELEV 1396	TDZE 1393
-----------	-----------



CATEGORY	A	B	C	D
S-14	2000-1	607 (700-1)	2000-1¾	607 (700-1¾)
<b>C</b> CIRCLING	2000-1	604 (700-1)	2080-2 684 (700-2)	2140-2½ 744 (800-2½)
DUVJU FIX MINIMUMS				
S-14	1760-1		367 (400-1)	
<b>C</b> CIRCLING	1820-1 424 (500-1)	1860-1 464 (500-1)	2080-2 684 (700-2)	2140-2½ 744 (800-2½)

HIRL Rwy 14-32 **1**  
REL Rwy's 14 and 32 **1**

# VOR RWY 14