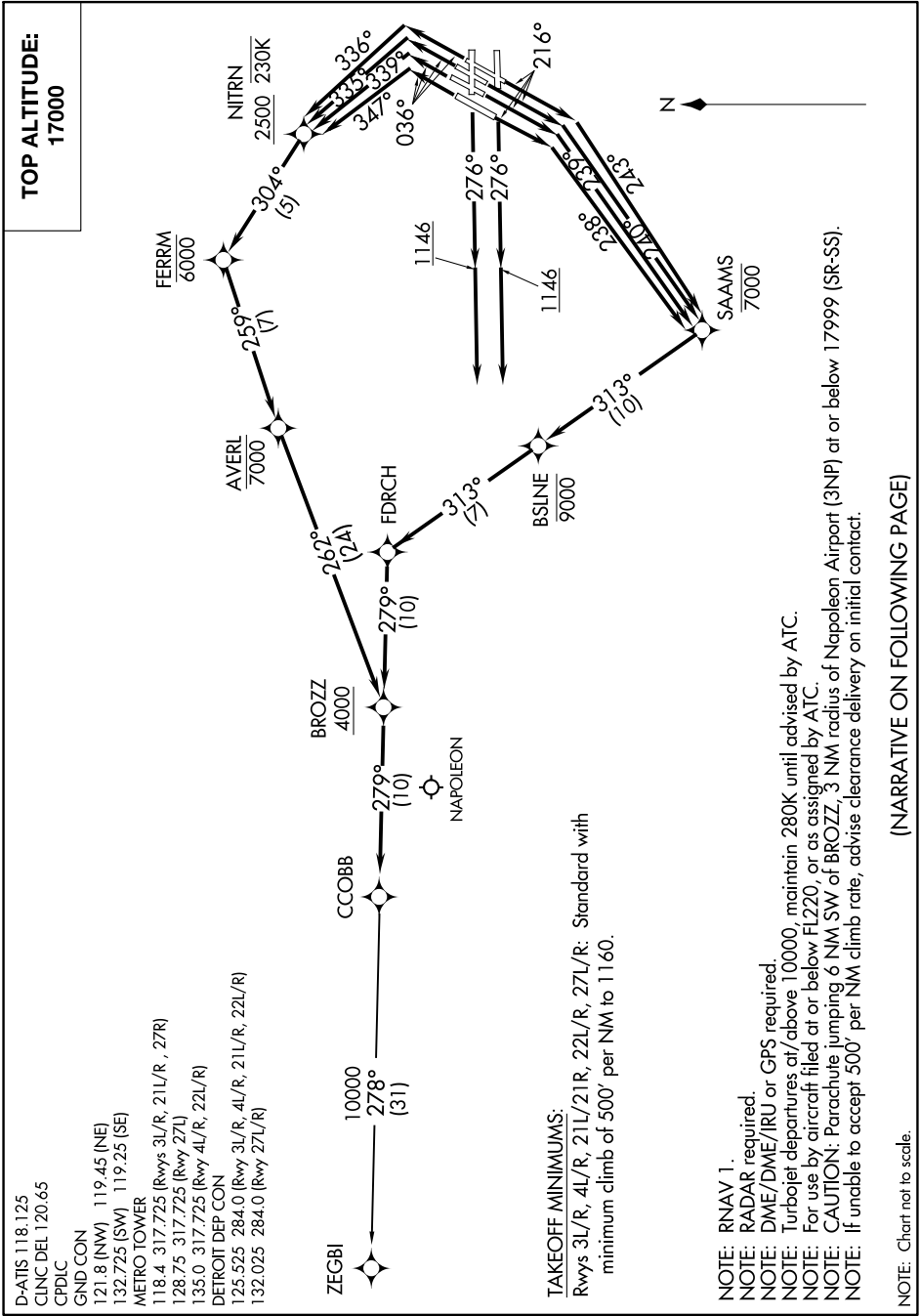


EC-1, 25 FEB 2021 to 25 MAR 2021



D-ATIS 118.125
 CLNC DEL 120.65
 CPDIC
 GND CON
 121.8 (NW) 119.45 (NE)
 132.725 (SW) 119.25 (SE)
 METRO TOWER
 118.4, 317.725 (Rwys 3L/R, 21L/R, 27R)
 128.75, 317.725 (Rwy 27L)
 135.0, 317.725 (Rwy 4L/R, 22L/R)
 DETROIT DEP CON
 125.525, 284.0 (Rwy 3L/R, 4L/R, 21L/R, 22L/R)
 132.025, 284.0 (Rwy 27L/R)

TAKEOFF MINIMUMS:
 Rwys 3L/R, 4L/R, 21L/21R, 22L/R, 27L/R: Standard with
 minimum climb of 500' per NM to 1160.

NOTE: RNAV 1.
 NOTE: RADAR required.
 NOTE: DME/DME/IRU or GPS required.
 NOTE: Turbojet departures at/above 10000, maintain 280K until advised by ATC.
 NOTE: For use by aircraft filed at or below FL220, or as assigned by ATC.
 NOTE: CAUTION: Parachute jumping 6 NM SW of BROZZ, 3 NM radius of Napoleon Airport (3NP) at or below 17999 (SR-SS).
 NOTE: If unable to accept 500' per NM climb rate, advise clearance delivery on initial contact.

NOTE: Chart not to scale.

(NARRATIVE ON FOLLOWING PAGE)

EC-1, 25 FEB 2021 to 25 MAR 2021