

# FERRL TWO ARRIVAL (RNAV)

EC-1, 25 FEB 2021 to 25 MAR 2021

NOTE: RADAR required.

NOTE: RNAV 1.

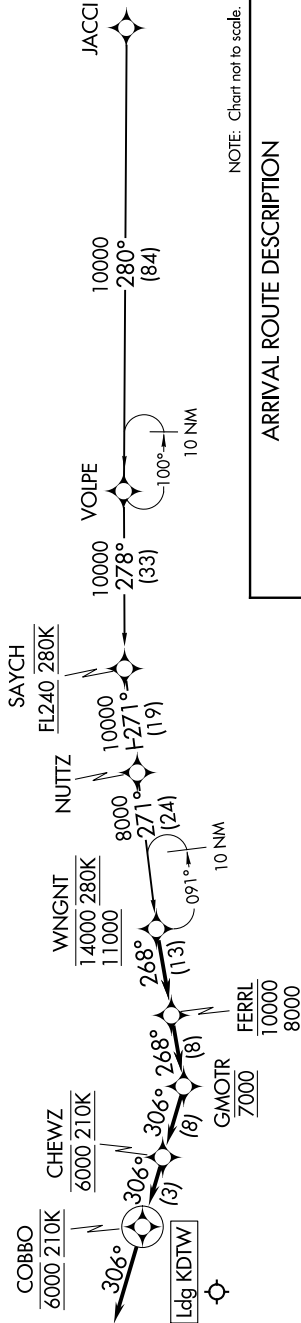
NOTE: DME/DME/IRU or GPS required.

NOTE: Expect Rwy 21L.

NOTE: Jet aircraft descend via Mach number until intercepting 280K. Maintain 280K until slowed by the STAR.

NOTE: For use when DTW landing south or west. When DTW landing north, file and expect the WNGNT RNAV STAR.

D-ATIS  
133.675  
DETROIT APP CON  
126.225 284.0



NOTE: Chart not to scale.

## ARRIVAL ROUTE DESCRIPTION

### JACCI TRANSITION (JACCI.FERRL2)

From WNGNT on track 268° to cross FERRL between 8000 and 10000, then on track 268° to cross GMOTR at 7000, then on track 306° to cross CHEWZ at 6000 and at 210K, then on track 306° to cross COBBO at 6000 and at 210K, then on track 306°. Expect RADAR vectors to final approach course.

### LOST COMMUNICATIONS:

From COBBO, execute ILS Rwy 21L approach.

# FERRL TWO ARRIVAL (RNAV)

EC-1, 25 FEB 2021 to 25 MAR 2021