

(HAYLL.HAYLL3) 19283

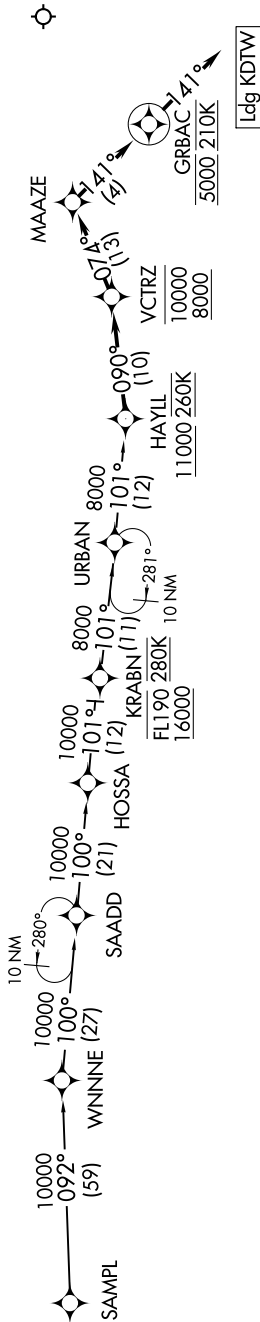
# HAYLL THREE ARRIVAL (RNAV)

DETROIT METROPOLITAN WAYNE COUNTY (DTW)  
AL-119 (FAA) DETROIT, MICHIGAN

EC-1, 25 FEB 2021 to 25 MAR 2021

D-ATIS  
133.675  
DETROIT APP CON  
124.975 284.0

- NOTE: RADAR required.
- NOTE: RNAV 1.
- NOTE: DME/DME/IRU or GPS required.
- NOTE: Expect Rwy 4L.
- NOTE: For use when DTW landing north.
- NOTE: When DTW landing south or west, file and expect the VCTRZ RNAV STAR.
- NOTE: For use by flights departing MDW, SBN, AZO, MCI, LAS, LAX, PHX, SAN, SNA airports only, or as assigned by ATC.



## ARRIVAL ROUTE DESCRIPTION

HOSSA TRANSITION (HOSSA.HAYLL3)  
SAMPL TRANSITION (SAMPL.HAYLL3)

From HAYLL on track 090° to cross VCTRZ between 8000 and 10000, then on track 074° to MAAZE, then on track 141° to cross GRBAC at 5000 and at 210K, then on track 141°. Expect RADAR vectors to final approach course.

## LOST COMMUNICATIONS

From GRBAC, execute RNAV (GPS) Y RWY 4L approach or ILS Y RWY 4L approach.

NOTE: Chart not to scale.

HAYLL THREE ARRIVAL (RNAV)  
(HAYLL.HAYLL3) 10OCT19

DETROIT, MICHIGAN  
DETROIT METROPOLITAN WAYNE COUNTY (DTW)

EC-1, 25 FEB 2021 to 25 MAR 2021