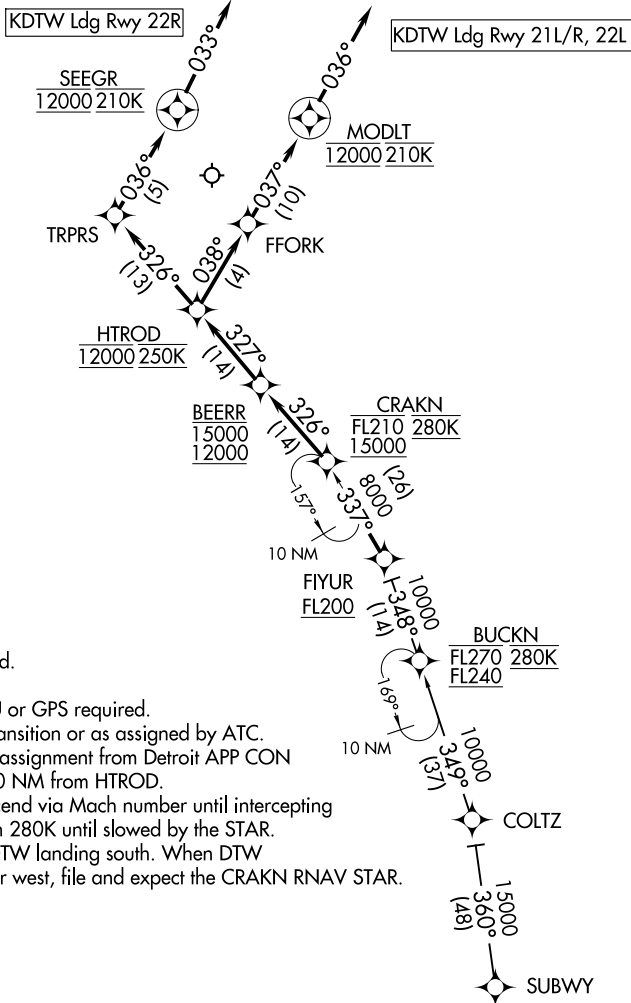


# HTROD TWO ARRIVAL (RNAV)

D-ATIS  
133.675  
DETROIT APP CON  
126.225 284.0



- NOTE: RADAR required.
- NOTE: RNAV 1.
- NOTE: DME/DME/IRU or GPS required.
- NOTE: Use Rwy 21L transition or as assigned by ATC. Expect runway assignment from Detroit APP CON no later than 10 NM from HTROD.
- NOTE: Jet aircraft descend via Mach number until intercepting 280K. Maintain 280K until slowed by the STAR.
- NOTE: For use when DTW landing south. When DTW landing north or west, file and expect the CRAKN RNAV STAR.

NOTE: Chart not to scale.

## ARRIVAL ROUTE DESCRIPTION

### SUBWY TRANSITION (SUBWY.HTROD2)

From CRAKN on track 326° to cross BEERR between 12000 and 15000, then on track 327° to cross HTROD at 12000 and at 250K.

LANDING RUNWAY 22L, 21L/R: From HTROD on track 038° to FFORK, then on track 037° to cross MODLT at 12000 and at 210K, then on track 036°.

Expect RADAR vectors to final approach course.

LANDING RUNWAY 22R: From HTROD on track 326° to TRPRS, then on track 036° to cross SEEGR at 12000 and at 210K, then on track 033°.

Expect RADAR vectors to final approach course.