

LOC/DME I-DWC 110.7 Chan 44	APP CRS 216°	Rwy Idg TDZE Apt Elev 12003 637 645
---	------------------------	---

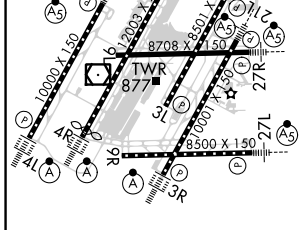
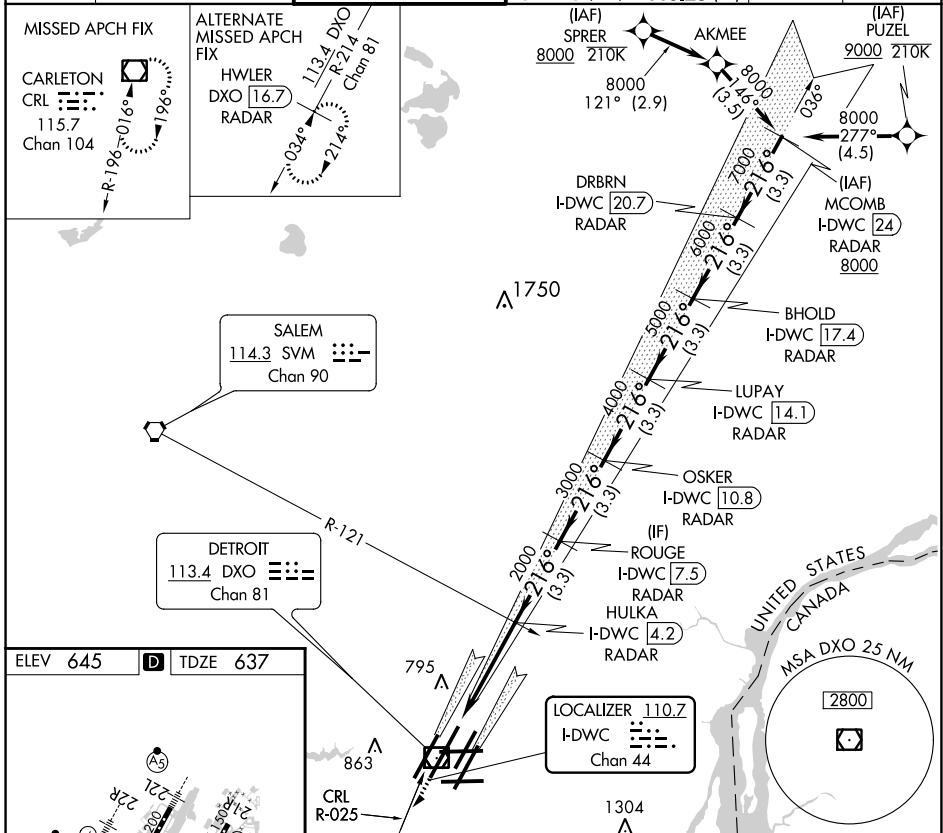
ILS RWY 22L (SA CAT I)
DETROIT METROPOLITAN WAYNE COUNTY (DTW)

DME or RADAR required. RNAV 1-DME/DME/IRU or RADAR required for procedure entry.

MALS R (AS) MISSED APPROACH: Climb to 4000 on heading 216° and CRL VOR/DME R-025 to CRL VOR/DME and hold, continue climb-in-hold to 4000.

Simultaneous approach authorized. Requires specific OPSPEC, MSPEC, or LOA approval and use of HUD to DH.

D-ATIS 133.675	DETROIT APP CON 124.05 284.0	METRO TOWER 128.125 317.725	GND CON 121.8 (NW) 132.725 (SW)	119.45 (NE) 119.25 (SE)	CLNC DEL 120.65	CPDLC
--------------------------	--	---------------------------------------	---	--	---------------------------	-------



ELEV 645 TDZE 637

TDZ/CL Rwy 3R, 4L, 4R and 22R
REIL Rwy 3L, 9L, 9R and 21R
HIRL all runways

4000	CRL R-025	CRL	OSKER I-DWC (10.8) RADAR	LUPAY I-DWC (14.1) RADAR	BHOLD I-DWC (17.4) RADAR	DRBRN I-DWC (20.7) RADAR	MCOMB I-DWC (24) RADAR
216°	hdg 216°		HULKA I-DWC (4.2) RADAR	ROUGE I-DWC (7.5) RADAR			
2000	2000	3000	4000	5000	6000	7000	8000
4.3 NM	3.3 NM	3.3 NM	3.3 NM	3.3 NM	3.3 NM	3.3 NM	3.3 NM
CATEGORY A	CATEGORY B			CATEGORY C		CATEGORY D	

S-ILS 22L SA CAT I RA 148/14 150 DA 787

SA CATEGORY I ILS- SPECIAL AIRCREW & AIRCRAFT CERTIFICATION REQUIRED

EC-1, 25 FEB 2021 to 25 MAR 2021

EC-1, 25 FEB 2021 to 25 MAR 2021