

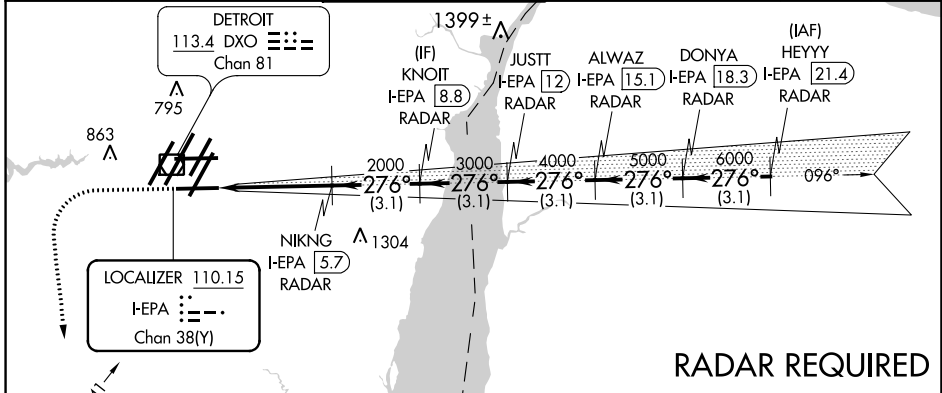
LOC/DME I-EPA <b>110.15</b> Chan <b>38(Y)</b>	APP CRS <b>276°</b>	Rwy Ldg TDZE Apt Elev	<b>8500</b> <b>630</b> <b>645</b>
---	------------------------	-----------------------------	---

# ILS RWY 27L (SA CAT I & II)

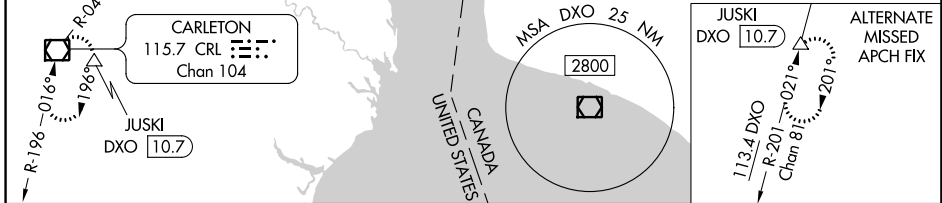
DETROIT METROPOLITAN WAYNE COUNTY (DTW)

<p><b>▽</b> DME or RADAR required. Simultaneous approach authorized. SA Cat I: Requires specific OPSPEC, MSPEC, or LOA approval and use of HUD to DH. SA Cat II: Reduced lighting: Requires specific OPSPEC, MSPEC, or LOA approval and use of Autoland or HUD to touchdown.</p>	<p>MALSR AS</p>	<p><b>MISSED APPROACH:</b> Climb to 1100 then climbing left turn to 4000 on heading 180° and CRL VOR/DME R-041 to CRL VOR/DME and hold, continue climb-in-hold to 4000.</p>
--	---------------------	---

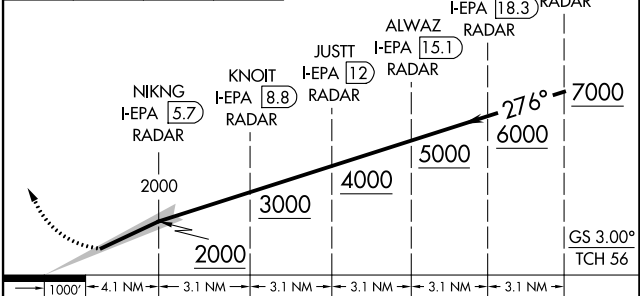
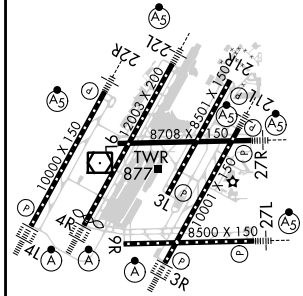
D-ATIS <b>133.675</b>	DETROIT APP CON <b>124.05 284.0</b>	METRO TOWER <b>128.75 317.725</b>	GND CON <b>121.8 (NW) 119.45 (NE)</b> <b>132.725 (SW) 119.25 (SE)</b>	CLNC DEL <b>120.65</b>	CPDLC
--------------------------	--	--------------------------------------	---	---------------------------	-------



## RADAR REQUIRED



ELEV <b>645</b>	<b>D</b>	TDZE <b>630</b>	1100	4000	hdg 180°	CRL R-041	VGSI and ILS glidepath not coincident (VGSI Angle 3.00/TCH 71).
-----------------	----------	-----------------	------	------	----------	-----------	---



CATEGORY	A	B	C	D
S-ILS 27L	SA CAT I	RA 146/16	150 DA 780	
S-ILS 27L	SA CAT II	RA 96/16	100 DA 730	

## SA CATEGORY I & II ILS SPECIAL AIRCREW & AIRCRAFT CERTIFICATION REQUIRED

TDZ/CL Rwy 3R, 4L, 4R and 22R  
REIL Rwy 3L, 9L, 9R and 21R  
HIRL all runways

EC-1, 25 FEB 2021 to 25 MAR 2021

EC-1, 25 FEB 2021 to 25 MAR 2021