

LOC/DME I-DTW 110.7	APP CRS 036°	Rwy Idg TDZE Apt Elev	11494 640 645
Chan 44			

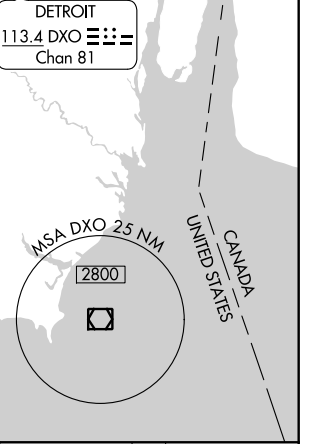
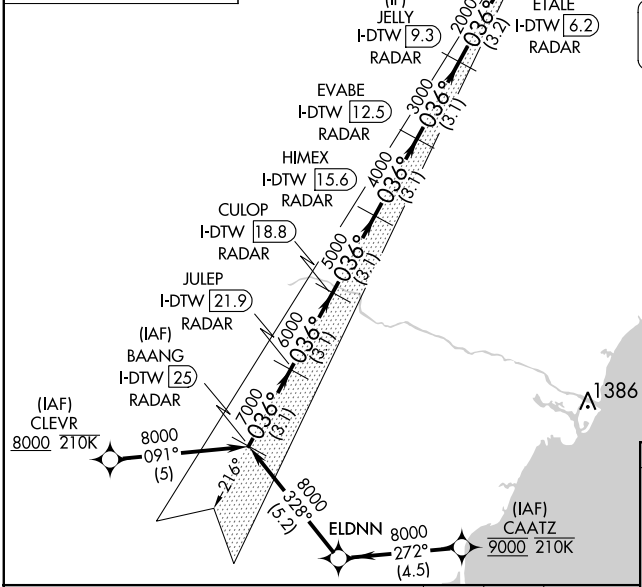
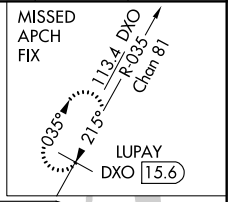
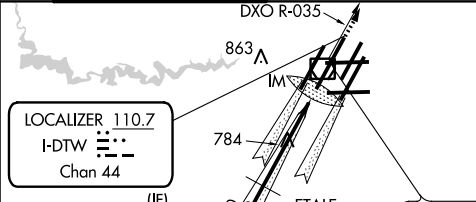
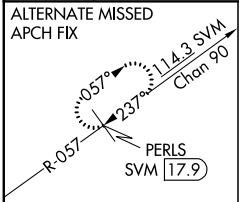
ILS RWY 4R (SA CAT I)

DETROIT METROPOLITAN WAYNE COUNTY (DTW)

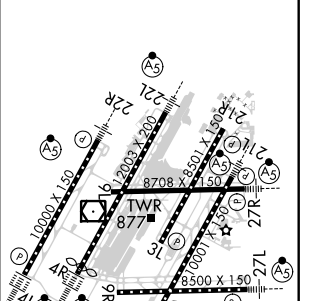
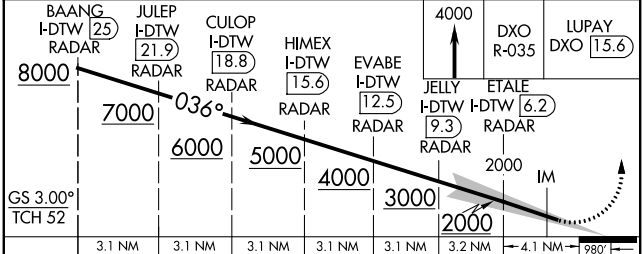
RNAV 1-GPS.
CLEVR, CAATZ and ELDNN: RNAV 1-DME/DME/IRU or GPS required. Aircraft not DME/DME/IRU or GPS equipped- RADAR required for procedure entry. DME or RADAR required.
Simultaneous approach authorized.
Requires specific OPSPEC, MSPEC, or LOA approval and use of HUD to DH.

ALSF-2
MISSED APPROACH: Climb to 4000 on DXO VOR/DME R-035 to LUPAY/DXO VOR/DME/15.6 DME and hold.

D-ATIS 133.675	DETROIT APP CON 124.05 284.0	METRO TOWER 128.125 317.725	GND CON 121.8 (NW) 132.725 (SW)	CON 119.45 (NE) 119.25 (SE)	CINC DEL 120.65	CPDLC
--------------------------	--	---------------------------------------	---	---	---------------------------	-------



ELEV 645	D TDZE 640
TDZ/CL Rwys 3R, 4L, 4R and 22R REIL Rwys 3L, 9L, 9R and 21R HIRL all runways	



CATEGORY	A	B	C	D
S-ILS 4R	RA 154/14		150 DA 790	

SA CATEGORY I ILS - SPECIAL AIRCREW & AIRCRAFT CERTIFICATION REQUIRED

EC-1, 25 FEB 2021 to 25 MAR 2021

EC-1, 25 FEB 2021 to 25 MAR 2021