

LOC/DME I-DWC <b>110.7</b> Chan <b>44</b>	APP CRS <b>216°</b>	Rwy Idg TDZE Apt Elev	<b>12003</b> <b>637</b> <b>645</b>
---	------------------------	-----------------------------	--

# ILS or LOC RWY 22L

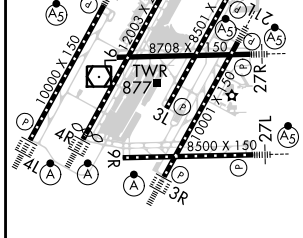
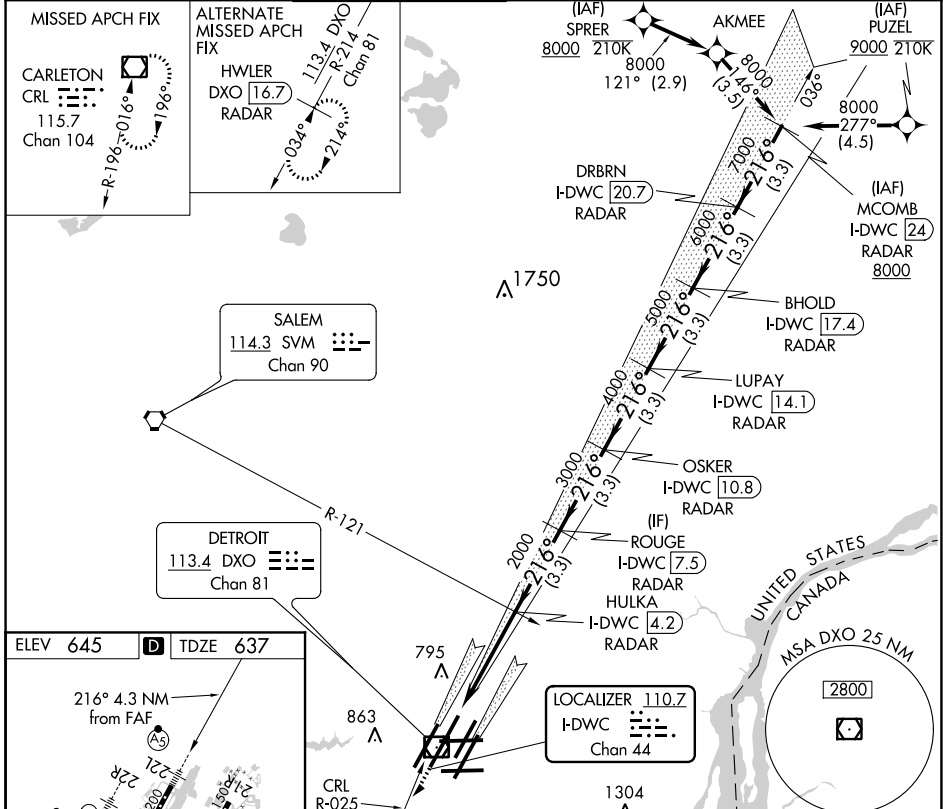
DETROIT METROPOLITAN WAYNE COUNTY (DTW)

DME or RADAR required.  
RNAV 1-DME/DME/IRU or RADAR required for procedure entry.

Simultaneous approach authorized.  
#RVR 1800 authorized with use of FD or AP or HUD to DA.

MALSRS  
MISSED APPROACH: Climb to 4000 on heading 216° and CRL VOR/DME R-025 to CRL VOR/DME and hold, continue climb-in-hold to 4000.

D-ATIS <b>133.675</b>	DETROIT APP CON <b>124.05 284.0</b>	METRO TOWER <b>128.125 317.725</b>	GND CON <b>121.8</b> (NW) <b>119.45</b> (NE) <b>132.725</b> (SW) <b>119.25</b> (SE)	CLNC DEL <b>120.65</b>	CPDLC
--------------------------	--	---------------------------------------	---	---------------------------	-------



ELEV 645	TDZE 637	* LOC only		LUPAY I-DWC (14.1) RADAR	BHOLD I-DWC (17.4) RADAR	DRBRN I-DWC (20.7) RADAR	MCOMB I-DWC (24) RADAR
4000	CRL R-025	CRL	OSKER I-DWC (10.8) RADAR	LUPAY I-DWC (14.1) RADAR	BHOLD I-DWC (17.4) RADAR	DRBRN I-DWC (20.7) RADAR	MCOMB I-DWC (24) RADAR
hdg 216°	I-DWC DME ANTENNA	HULKA I-DWC (4.2) RADAR	ROUGE I-DWC (7.5) RADAR	OSKER I-DWC (10.8) RADAR	LUPAY I-DWC (14.1) RADAR	BHOLD I-DWC (17.4) RADAR	DRBRN I-DWC (20.7) RADAR
I-DWC (0.2)	* I-DWC (0.9)	2000	3000	4000	5000	6000	7000
1 NM	3.3 NM	3.3 NM	3.3 NM	3.3 NM	3.3 NM	3.3 NM	3.3 NM

TDZ/CL Rwy 3R, 4L, 4R and 22R	REIL Rwy 3L, 9L, 9R and 21R	HIRL all runways		
CATEGORY	A	B	C	D
S-ILS 22L#	837/24 200 (200-½)			
S-LOC 22L	1020/24	383 (400-½)	1020/35	383 (400-½)
CIRCLING	1180-1	535 (600-1)	1180-1½	535 (600-1½)
			1240-2	595 (600-2)

EC-1, 25 FEB 2021 to 25 MAR 2021

EC-1, 25 FEB 2021 to 25 MAR 2021