

LOC I-DMI 108.5	APP CRS 276°	Rwy Idg TDZE Apt Elev	8708 635 645
---------------------------	------------------------	-----------------------------	---

ILS or LOC RWY 27R

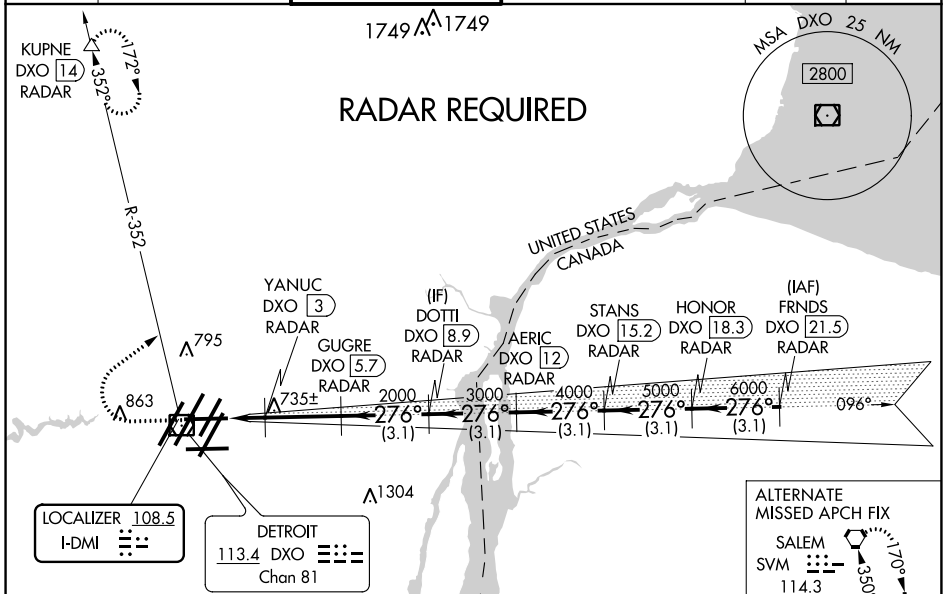
DETROIT METROPOLITAN WAYNE COUNTY (DTW)

▽ DME or RADAR required. Simultaneous approach authorized. DME from DXO VOR/DME. Simultaneous reception of I-DMI and DXO DME required. For inop ALS, increase S-LOC 27R Cats C and D visibility to RVR 5500.
**** RVR 1800 authorized with use of FD or AP or HUD to DA.**

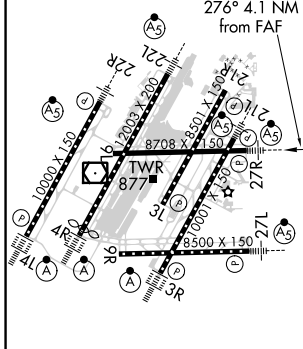


MISSED APPROACH: Climb to 1100 then climbing right turn to 4000 on DXO VOR/DME R-352 to KUPNE/DXO 14 DME/RADAR and hold, continue climb-in-hold to 4000.

D-ATIS 133.675	DETROIT APP CON 125.15 284.0	METRO TOWER 118.4 317.725	GND CON 121.8 (NW) 119.45 (NE) 132.725 (SW) 119.25 (SE)	CLNC DEL 120.65	CPDLC
--------------------------	--	-------------------------------------	---	---------------------------	-------



ELEV 645	D	TDZE 635
----------	----------	----------



TDZ/CL Rwy 3R, 4L, 4R and 22R
REIL Rwy 3L, 9L, 9R and 21R
HIRL all runways

FAF to MAP 4.1 NM

Knots	60	90	120	150	180
Min:Sec	4:06	2:44	2:03	1:38	1:22

C CIRCLING

1100	4000	KUPNE	VGSI and ILS glidepath not coincident (VGSI Angle 3.00/TCH 61).	HONOR	FRNDS
↑	↷	DXO R-352	Δ	DXO 18.3	DXO 21.5
*LOC only.					
YANUC DXO 3 RADAR		DOTII DXO 8.9 RADAR	AERIC DXO 12 RADAR	STANS DXO 15.2 RADAR	HONOR DXO 18.3 RADAR
GUGRE DXO 5.7 RADAR		FRNDS DXO 21.5 RADAR			
DXO 1.6 RADAR		276° 7000			
*1120 2000		GS 3.00° TCH 50			
1.4 NM - 2.7 NM - 3.1 NM - 3.1 NM - 3.1 NM - 3.1 NM - 3.1 NM					
CATEGORY	A	B	C	D	
S-ILS 27R	** 835/24 200 (200-½)				
S-LOC 27R	1000/24	365 (400-½)	1000/35	365 (400-¾)	
C CIRCLING	1180-1	535 (600-1)	1180-1½ 535 (600-½)	1240-2 595 (600-2)	

EC-1, 25 FEB 2021 to 25 MAR 2021

EC-1, 25 FEB 2021 to 25 MAR 2021