

DETROIT, MICHIGAN

AL-119 (FAA)


ILS PRM RWY 4R (SA CAT I) (CLOSE PARALLEL)

20254

LOC/DME I-DTW 110.7	APP CRS 036°	Rwy Idg 11494
Chan 44		TDZE 640
		Apt Elev 645

DETROIT METROPOLITAN WAYNE COUNTY (DTW)

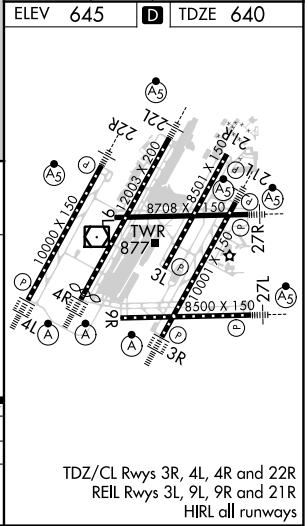
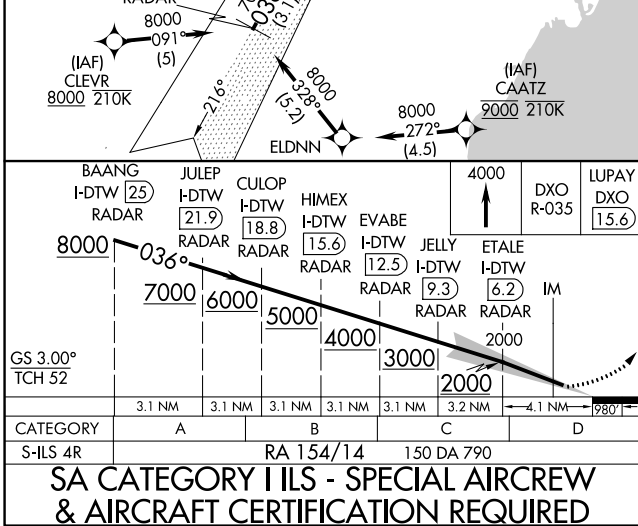
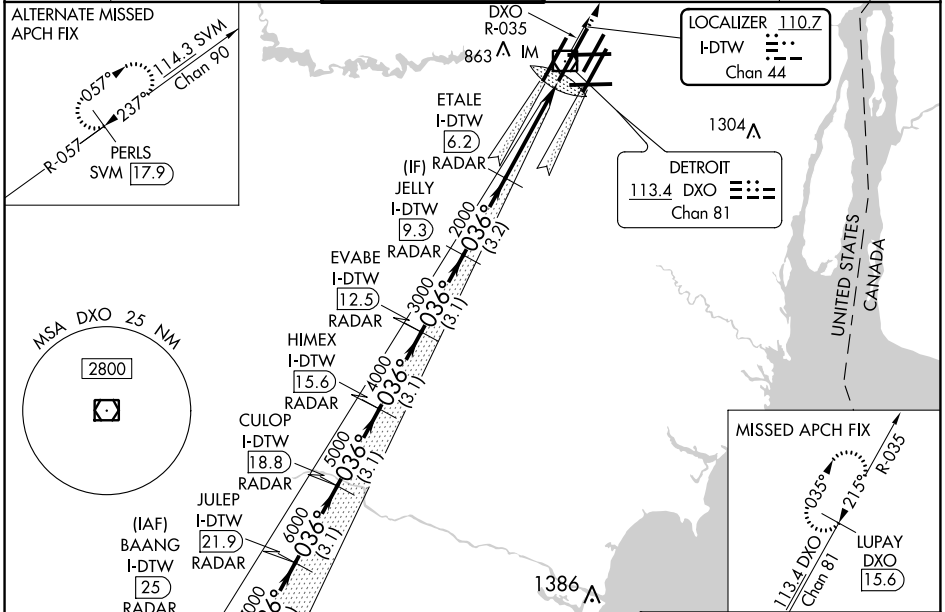
RNAV 1-GPS. DME or RADAR required. CLEVR, CAATZ and ELDNN: RNAV 1-DME/DME/IRU or GPS required. Aircraft not DME/DME/IRU or GPS equipped- RADAR required for procedure entry.

ALSIF-2 

MISSED APPROACH: Climb to 4000 on DXO VOR/DME R-035 to LUPAY/DXO VOR/DME 15.6 DME and hold.

Simultaneous approach authorized. Use of FD or AP required during simultaneous operations. Dual VHF Comm required. See additional requirements on AAUP. Procedure NA when glideslope not available. Requires specific OPSPEC, MSPEC, or LOA approval and use of HUD to DH.

D-ATIS 133.675	DETROIT APP CON 124.05 284.0	METRO TOWER 128.125 317.725 PRM 135.775	GND CON 121.8 (NW) 119.45 (NE) 132.725 (SW) 119.25 (SE)	CLNC DEL 120.65	CPDLC
--------------------------	--	---	---	---------------------------	-------



EC-1, 25 FEB 2021 to 25 MAR 2021

EC-1, 25 FEB 2021 to 25 MAR 2021

DETROIT, MICHIGAN
Amdt 3A 13SEP18

42°13'N-83°21'W

DETROIT METROPOLITAN WAYNE COUNTY (DTW)

ILS PRM RWY 4R (SA CAT I) (CLOSE PARALLEL)