

DETROIT, MICHIGAN

AL-119 (FAA)

# ILS PRM Z RWY 4L

## (CLOSE PARALLEL)

DETROIT METROPOLITAN WAYNE COUNTY (DTW)

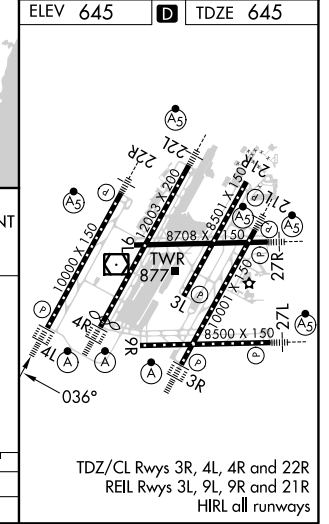
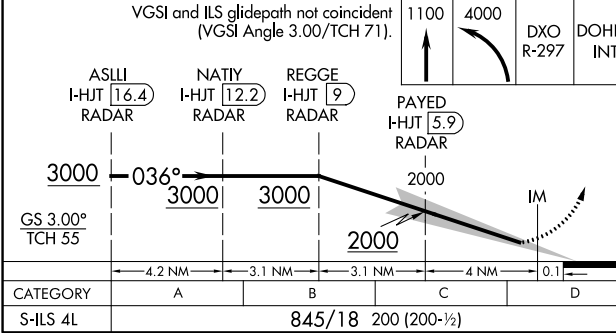
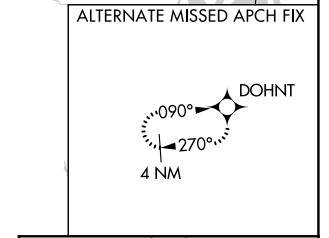
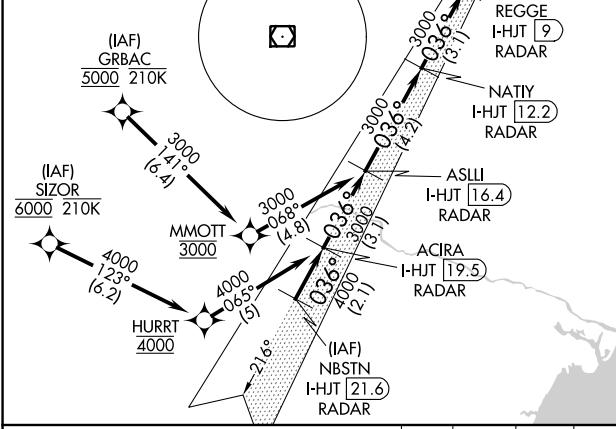
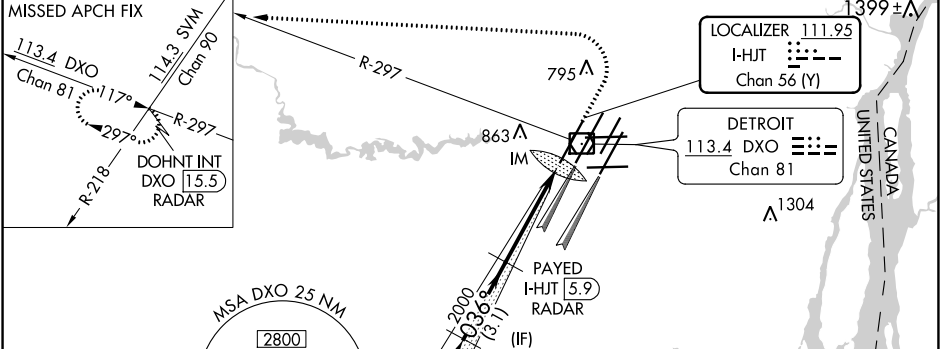
LOC/DME I-HJT <b>111.95</b> Chan <b>56 (Y)</b>	APP CRS <b>036°</b>	Rwy Idg TDZE Apt Elev	<b>10000</b> <b>645</b> <b>645</b>
--	------------------------	-----------------------------	--

From GRBAC, SIZOR: RNAV 1-DME/DME/IRU or GPS required. Aircraft not DME/DME/IRU or GPS equipped - RADAR required for procedure entry. DME or RADAR required.

ALSF-2  
MISSED APPROACH: Climb to 1100 then climbing left turn to 4000 on DXO VOR/DME R-297 to DOHNT INT/DXO 15.5 DME/RADAR and hold.

Simultaneous approach authorized. Use of FD or AP required during simultaneous operations. Dual VHF Comm required. See additional requirements on AAUP.

D-ATIS <b>133.675</b>	DETROIT APP CON <b>124.05 284.0</b>	METRO TOWER <b>135.0 317.725</b> <b>PRM 127.05</b>	GND CON <b>121.8 (NW) 119.45 (NE)</b> <b>132.725 (SW) 119.25 (SE)</b>	CLNC DEL <b>120.65</b>	CPDLC
--------------------------	--	--	---	---------------------------	-------



EC-1, 25 FEB 2021 to 25 MAR 2021

EC-1, 25 FEB 2021 to 25 MAR 2021