

LOC/DME I-JKI <b>111.95</b>	APP CRS <b>216°</b>	Rwy Idg <b>10000</b>
Chan <b>56 (Y)</b>		TDZE <b>642</b>
		Apt Elev <b>645</b>

# ILS Z RWY 22R (SA CAT I & II)

DETROIT METROPOLITAN WAYNE COUNTY (DTW)

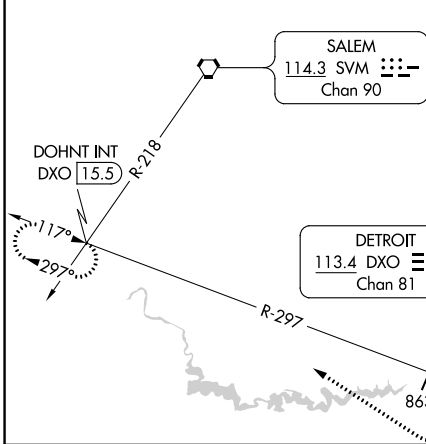
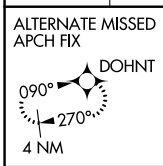
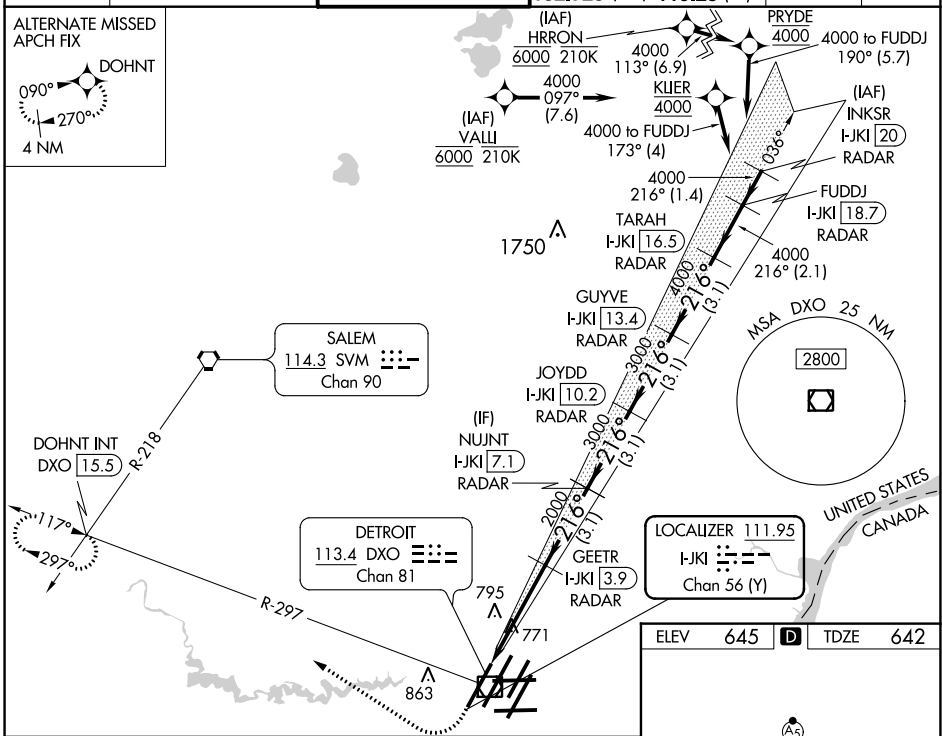
RNAV 1-GPS, HRRON and VALLI: RNAV 1-DME/DME/IRU or GPS required.  
 Aircraft not DME/DME/IRU or GPS equipped - RADAR required for procedure entry.

Simultaneous approach authorized. SA CAT I: Requires specific OPSPEC, MSPEC, or LOA approval and use of HUD to DH. SA CAT II: Reduced lighting: Requires specific OPSPEC, MSPEC, or LOA approval and use of autoland or HUD to touchdown.

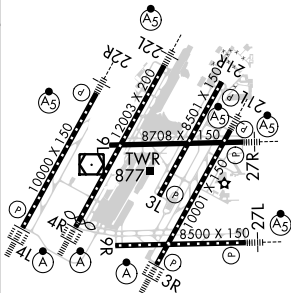
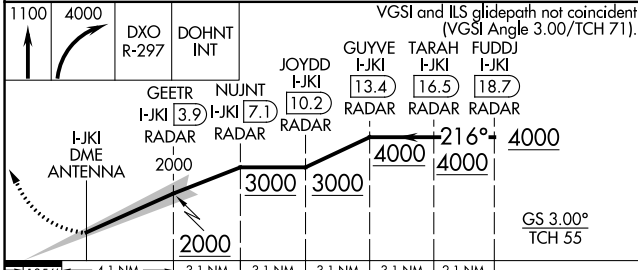


MISSED APPROACH: Climb to 1100 then climbing right turn to 4000 on DXO VOR/DME R-297 to DOHNT INT/DXO 15.5 DME and hold.

D-ATIS <b>133.675</b>	DETROIT APP CON <b>124.05 284.0</b>	METRO TOWER <b>135.0 317.725</b>	GND CON <b>121.8 (NW) 119.45 (NE)</b> <b>132.725 (SW) 119.25 (SE)</b>	CLNC DEL <b>120.65</b>	CPDLC
--------------------------	--	-------------------------------------	---	---------------------------	-------



ELEV	645	TDZE	642
------	-----	------	-----



CATEGORY	A	B	C	D
S-ILS 22R	SA CAT I	RA 148/14	150 DA 792	
S-ILS 22R	SA CAT II	RA 98/12	100 DA 742	

**SA CATEGORY I & II ILS - SPECIAL AIRCREW & AIRCRAFT CERTIFICATION REQUIRED**

TDZ/CL Rwy 3R, 4L, 4R and 22R  
 REL Rwy 3L, 9L, 9R and 21R  
 HIRL all Rwy's

EC-1, 25 FEB 2021 to 25 MAR 2021

EC-1, 25 FEB 2021 to 25 MAR 2021