

LOC/DME I-HJT 111.95 Chan 56 (Y)	APP CRS 036°	Rwy Idg TDZE Apt Elev	10000 645 645
---	------------------------	-----------------------------	--

ILS Z RWY 4L (CAT II & III)

DETROIT METROPOLITAN WAYNE COUNTY (DTW)

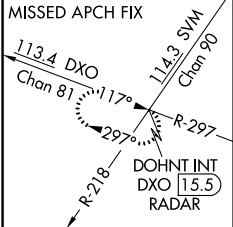
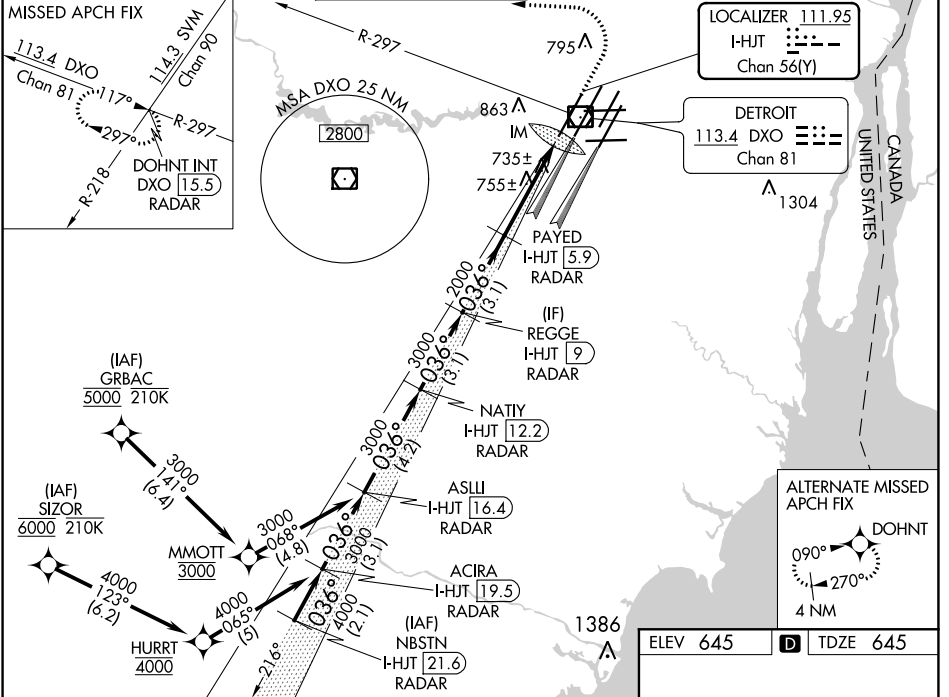
From GRBAC, SIZOR: RNAV 1-DME/DME/IRU or GPS required. Aircraft not DME/DME/IRU or GPS equipped - RADAR required for procedure entry. DME or RADAR required.

ALSF-2

MISSED APPROACH: Climb to 1100 then climbing left turn to 4000 on DXO VOR/DME R-297 to DOHNT INT/DXO 15.5 DME/RADAR and hold.

Simultaneous approach authorized. CAT II; RVR 1000 authorized with specific OPSPEC, MSPEC, or LOA approval and use of autoland or HUD to touchdown.

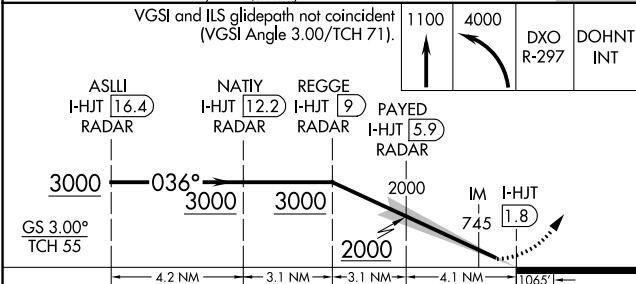
D-ATIS 133.675	DETROIT APP CON 124.05 284.0	METRO TOWER 135.0 317.725	GND CON 121.8 (NW) 132.725 (SW)	CON 119.45 (NE) 119.25 (SE)	CLNC DEL 120.65	CPDLC
--------------------------	--	-------------------------------------	---	---	---------------------------	-------



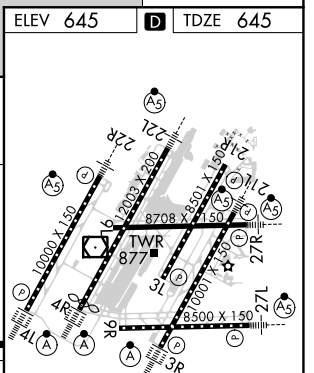
LOCALIZER 111.95
I-HJT
Chan 56(Y)

DETROIT
113.4 DXO
Chan 81

ALTERNATE MISSED APCH FIX
DOHNT
090°
270°
4 NM



CATEGORY	A	B	C	D
S-ILS 4L	CAT II RA 101/12		100 DA 745	
S-ILS 4L	CAT III RVR 600			



TDZ/CL Rwy's 3R, 4L, 4R and 22R
REIL Rwy's 3L, 9L, 9R and 21R
HIRL all runways

CATEGORY II & III ILS - SPECIAL AIRCREW & AIRCRAFT CERTIFICATION REQUIRED

EC-1, 25 FEB 2021 to 25 MAR 2021

EC-1, 25 FEB 2021 to 25 MAR 2021