

(KAYLN2.KAYLN) 19227

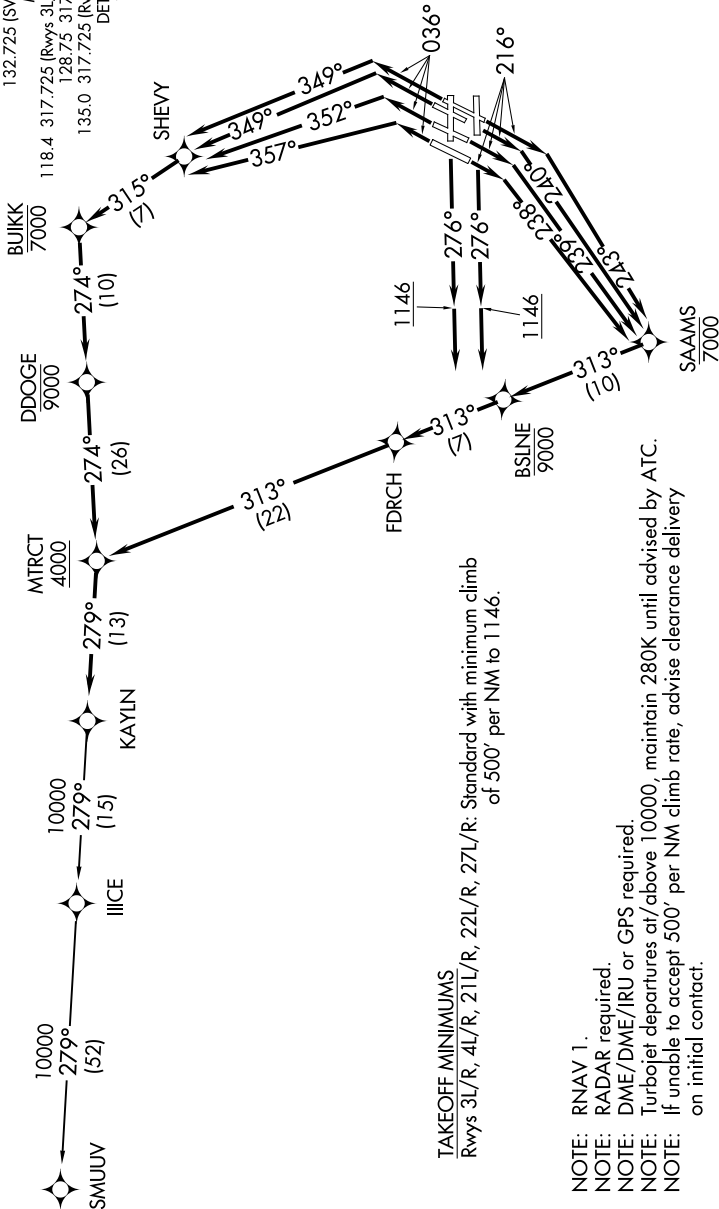
KAYLN TWO DEPARTURE (RNAV)

DETROIT METROPOLITAN WAYNE COUNTY (DTW)

DETROIT, MICHIGAN

D-ATIS 118.125
CLINC DEL 120.65
CPDIC

GND CON
121.8 (NW) 119.45 (NE)
132.725 (SW) 119.25 (SE)
METRO TOWER
118.4 317.725 (Rwys 3L/R, 21L/R, 27R)
128.75 317.725 (Rwy 27L)
135.0 317.725 (Rwy 4L/R, 22L/R)
DETROIT DEP CON
125.525 284.0



**TOP ALTITUDE:
17000**

TAKEOFF MINIMUMS

Rwys 3L/R, 4L/R, 21L/R, 22L/R, 27L/R, 27R, 27L/R: Standard with minimum climb of 500' per NM to 1146.

NOTE: RNAV 1.

NOTE: RADAR required.

NOTE: DME/DME/IRU or GPS required.

NOTE: Turbojet departures at/above 10000, maintain 280K until advised by ATC.

NOTE: If unable to accept 500' per NM climb rate, advise clearance delivery on initial contact.

(NARRATIVE ON FOLLOWING PAGE)

NOTE: Chart not to scale.

KAYLN TWO DEPARTURE (RNAV)

(KAYLN2.KAYLN) 15AUG19

DETROIT, MICHIGAN

DETROIT METROPOLITAN WAYNE COUNTY (DTW)