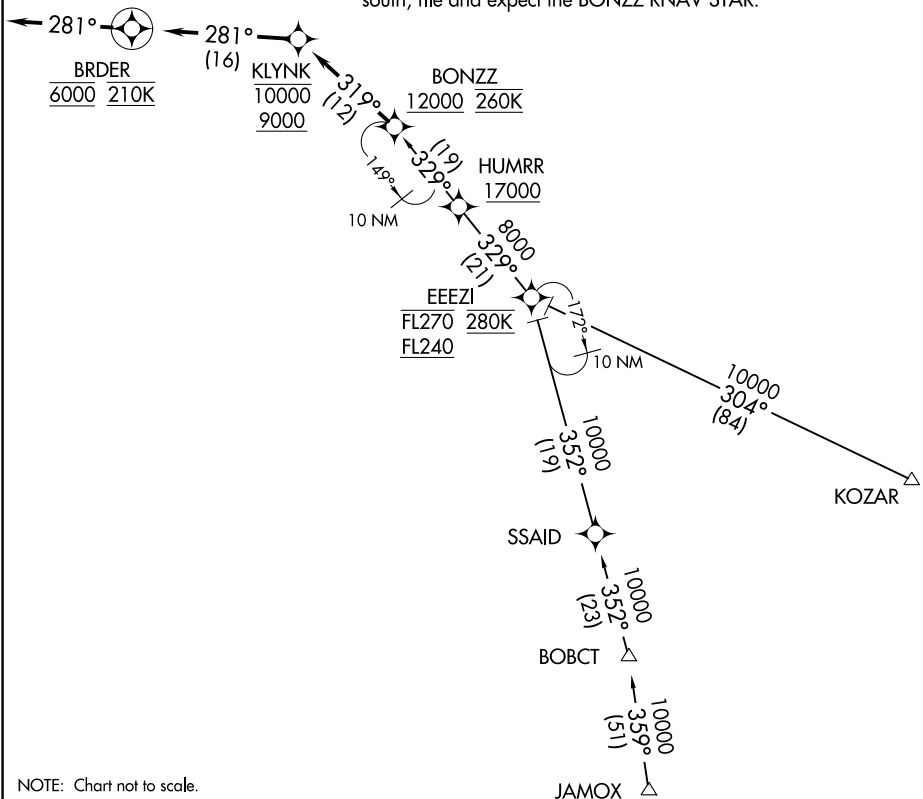


D-ATIS  
133.675  
DETROIT APP CON  
126.225 284.0

NOTE: RADAR required.  
NOTE: RNAV 1.  
NOTE: DME/DME/IRU or GPS required.  
NOTE: Expect Rwy 3R.  
NOTE: Jet aircraft descend via Mach number until intercepting 280K.  
Maintain 280K until slowed by the STAR.  
NOTE: For use when DTW landing north or west. When DTW landing south, file and expect the BONZZ RNAV STAR.

Ldg KDTW



NOTE: Chart not to scale.

ARRIVAL ROUTE DESCRIPTION

JAMOX TRANSITION (JAMOX.KLYNK3)

KOZAR TRANSITION (KOZAR.KLYNK3)

From BONZZ on track 319° to cross KLYNK between 9000 and 10000, then on track 281° to cross BRDER at 6000 and at 210K, then on track 281°. Expect RADAR vectors to final approach course.

LOST COMMUNICATIONS

From BRDER, execute ILS Rwy 3R approach.

EC-1, 25 FEB 2021 to 25 MAR 2021

EC-1, 25 FEB 2021 to 25 MAR 2021