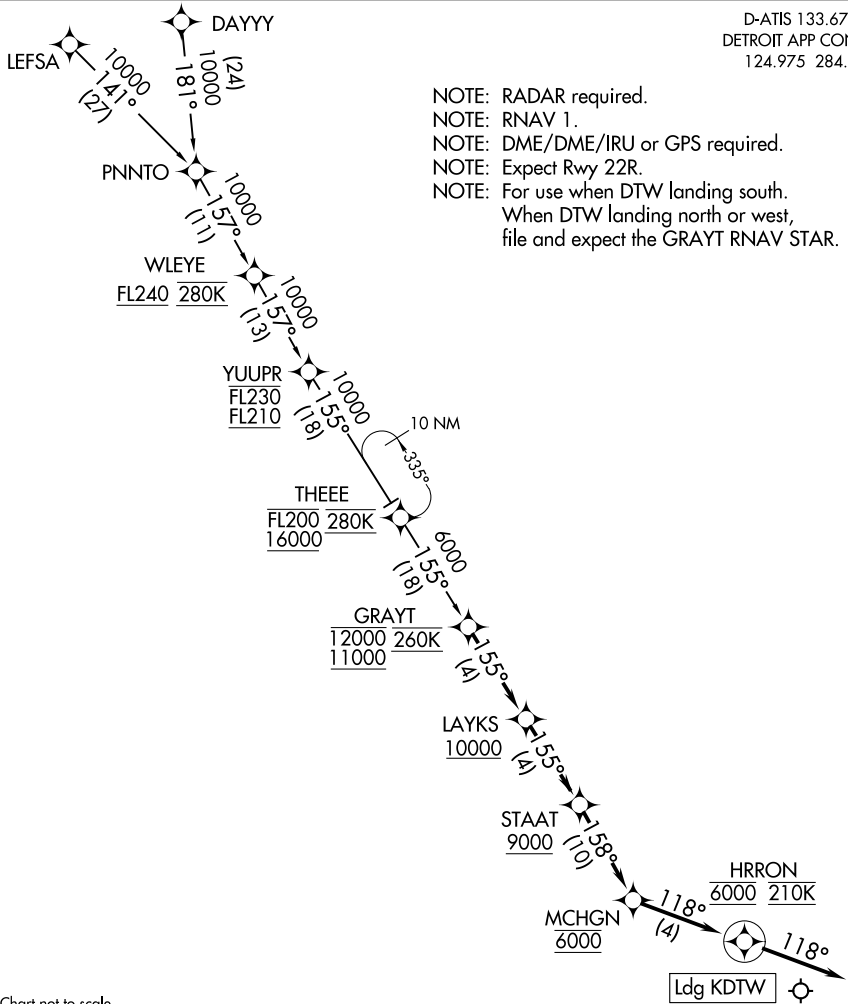


(GRAYT.LAYKS2) 19283

LAYKS TWO ARRIVAL (RNAV)

DETROIT METROPOLITAN WAYNE COUNTY (DTW)
AL-119 (FAA) DETROIT, MICHIGAN

D-ATIS 133.675
DETROIT APP CON
124.975 284.0



EC-1, 25 FEB 2021 to 25 MAR 2021

EC-1, 25 FEB 2021 to 25 MAR 2021

NOTE: Chart not to scale.

ARRIVAL ROUTE DESCRIPTION

DAYYY TRANSITION (DAYYY.LAYKS2)

LEFSA TRANSITION (LEFSA.LAYKS2)

From GRAYT on track 155° to cross LAYKS at or above 10000, then on track 155° to cross STAAT at or above 9000, then on track 158° to MCHGN at 6000, then on track 118° to cross HRRON at 6000 and at 210K, then on track 118°. Expect RADAR vectors to final approach course.

LOST COMMUNICATIONS: From HRRON, execute RNAV (GPS) Y RWY 22R or ILS Y RWY 22R approach.

LAYKS TWO ARRIVAL (RNAV)

(GRAYT.LAYKS2) 100CT19

DETROIT, MICHIGAN
DETROIT METROPOLITAN WAYNE COUNTY (DTW)