

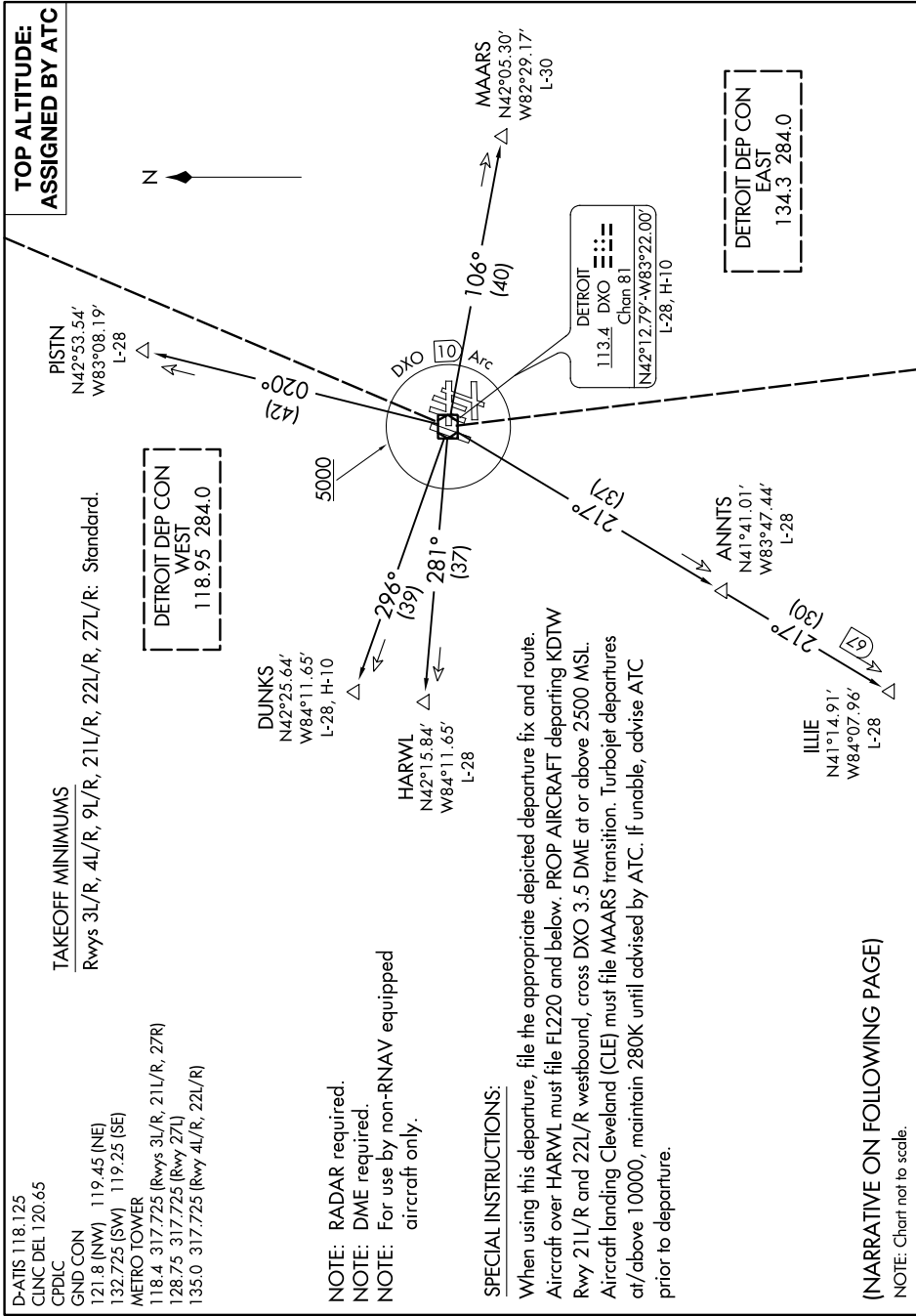
METRO THREE DEPARTURE

AL-119 (FAA)

DETROIT METROPOLITAN WAYNE COUNTY (DTW)

DETROIT, MICHIGAN

EC-1, 25 FEB 2021 to 25 MAR 2021



D-ATIS 118.125
 CLNC DEL 120.65
 CPDC
 GND CON 121.8 (NW) 119.45 (NE)
 132.725 (SW) 119.25 (SE)
 METRO TOWER 118.4 317.725 (Rwys 3L/R, 21L/R, 27R)
 128.75 317.725 (Rwy 27L)
 135.0 317.725 (Rwy 4L/R, 22L/R)

TAKEOFF MINIMUMS

Rwys 3L/R, 4L/R, 9L/R, 21L/R, 22L/R, 27L/R: Standard.

DETOIT DEP CON WEST
 118.95 284.0

DETOIT DEP CON EAST
 134.3 284.0

DETROIT 113.4 DXO Chan 81
 N42°12.79'-W83°22.00'
 L-28, H-10

NOTE: RADAR required.
 NOTE: DME required.
 NOTE: For use by non-RNAV equipped aircraft only.

SPECIAL INSTRUCTIONS:

When using this departure, file the appropriate depicted departure fix and route. Aircraft over HARWL must file FL220 and below. PROP AIRCRAFT departing KDTW Rwy 21L/R and 22L/R westbound, cross DXO 3.5 DME at or above 2500 MSL. Aircraft landing Cleveland (CLE) must file MAARS transition. Turbojet departures at/above 10000, maintain 280K until advised by ATC. If unable, advise ATC prior to departure.

(NARRATIVE ON FOLLOWING PAGE)

NOTE: Chart not to scale.

EC-1, 25 FEB 2021 to 25 MAR 2021

METRO THREE DEPARTURE