

DETROIT, MICHIGAN

AL-119 (FAA)

# RNAV (GPS) PRM Y RWY 4L (CLOSE PARALLEL)

DETROIT METROPOLITAN WAYNE COUNTY (DTW)

WAAS CH <b>73039</b> <b>W04A</b>	APP CRS <b>038°</b>	Rwy Idg <b>10000</b> TDZE <b>645</b> Apt Elev <b>645</b>
----------------------------------------	------------------------	----------------------------------------------------------------

### RNP APCH

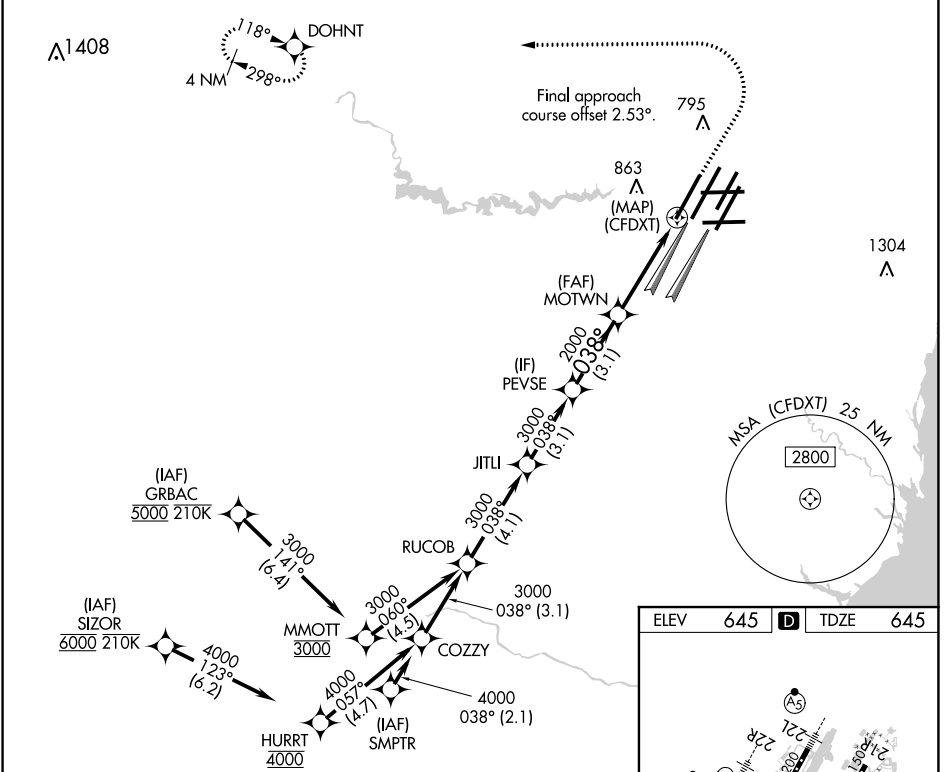
▼ Rwy 4L and 4R separated by 3000 feet centerline to centerline. For uncompensated Baro-VNAV systems, LNAV/VNAV NA below -19°C or above 54°C. Simultaneous approach authorized. Use of FD or AP required during simultaneous operations. Dual VHF comm required. See additional requirements on AAUP.

ALSF-2



MISSED APPROACH:  
Climb to 1100 then  
climbing left turn to 4000  
direct DOHNT and hold.

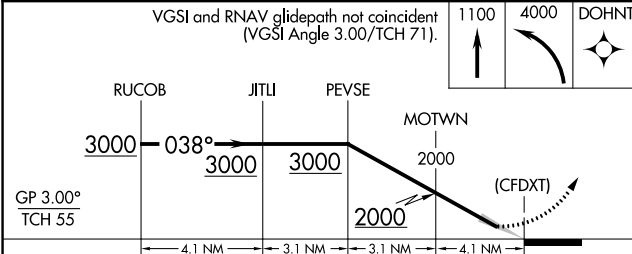
D-ATIS <b>133.675</b>	DETROIT APP CON <b>124.05 284.0</b>	METRO TOWER <b>135.0 317.725</b> <b>PRM 127.05</b>	GND CON <b>121.8 (NW) 119.45 (NE)</b> <b>132.725 (SW) 119.25 (SE)</b>	CLNC DEL <b>120.65</b>	CPDLC
--------------------------	----------------------------------------	----------------------------------------------------------	-----------------------------------------------------------------------------	---------------------------	-------



EC-1, 25 FEB 2021 to 25 MAR 2021

EC-1, 25 FEB 2021 to 25 MAR 2021

VGSI and RNAV glidepath not coincident (VGSI Angle 3.00/TCH 71).



CATEGORY	A	B	C	D
LPV DA		895/24	250 (300-1/2)	
LNAV/VNAV DA		1068/45	423 (500-7/8)	

ELEV 645	D	TDZE 645
----------	---	----------

Diagram showing the runway layout including RWY 4L, 4R, 22R, 22L, 3L, 9L, 9R, 21R, 21L, 3R, and 21R. TWR 877. HIRL all runways.

DETROIT, MICHIGAN  
Orig-A 10OCT19

42°13'N-83°21'W

DETROIT METROPOLITAN WAYNE COUNTY (DTW)

# RNAV (GPS) PRM Y RWY 4L (CLOSE PARALLEL)