

DETROIT, MICHIGAN

AL-119 (FAA)

RNAV (GPS) PRM Z RWY 22L (CLOSE PARALLEL)

DETROIT METROPOLITAN WAYNE COUNTY (DTW)

WAAS CH 99601 W22A	APP CRS 216°	Rwy Idg 12003 TDZE 637 Apt Elev 645
--	------------------------	--

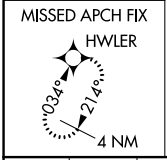
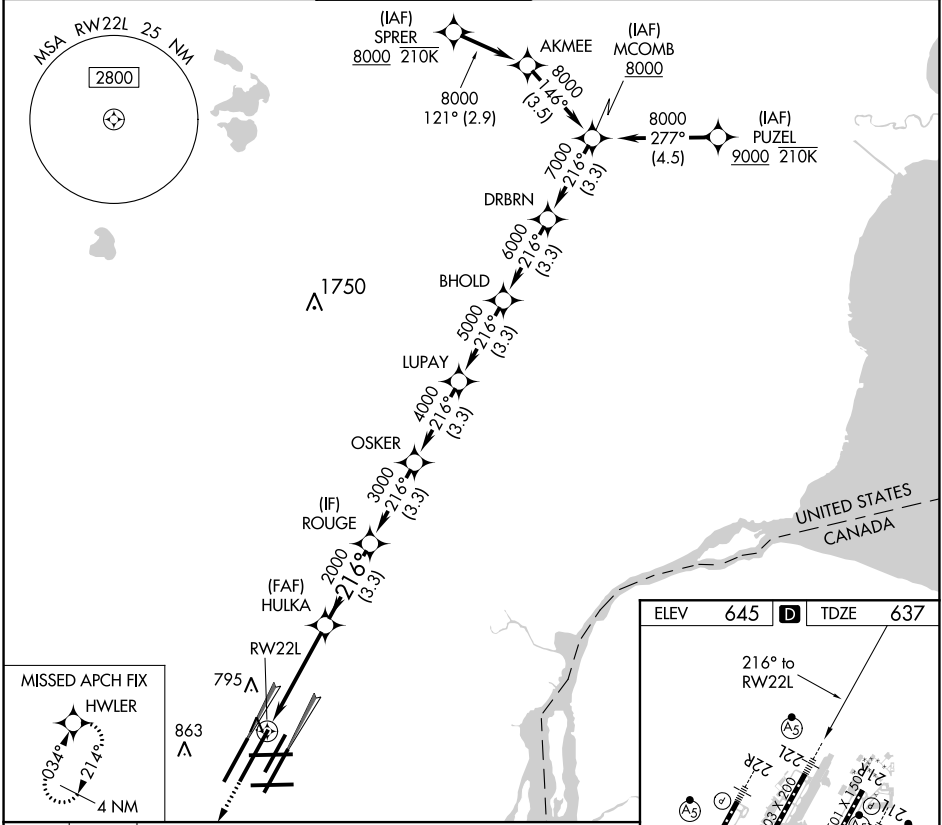
RNP APCH.

▼ For uncompensated Baro-VNAV systems, LNAV/VNAV NA below -10°C or above 54°C. Simultaneous approach authorized. Use of FD or AP required during simultaneous operations. Dual VHF comm required. See additional requirements on AAUP. For inop ALS, increase LNAV/VNAV all Cats visibility to RVR 4500. * RVR 1800 authorized with use of FD or AP or HUD to DA.

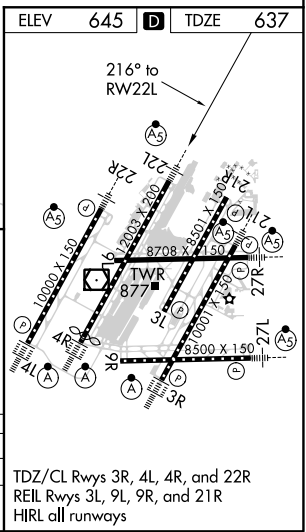


MISSED APPROACH:
Climb to 4000 direct
HWLER and hold.

D-ATIS 133.675	DETROIT APP CON 124.05 284.0	METRO TOWER 128.125 317.725 PRM 135.775	GND CON 121.8 (NW) 119.45 (NE) 132.725 (SW) 119.25 (SE)	CLNC DEL 120.65	CPDLC
--------------------------	--	---	---	---------------------------	-------



4000 HWLER	DRBRN	MCOMB	216°	8000
HULKA	ROUGE	OSKER	LUPAY	BHOLD
2000	3000	4000	5000	6000
RW22L	2000	3000	4000	5000
4.3 NM	3.3 NM	3.3 NM	3.3 NM	3.3 NM



CATEGORY	A	B	C	D
LPV DA *		837/24	200 (200-1/2)	
LNAV/VNAV DA		938/24	301 (300-1/2)	

TDZ/CL Rwys 3R, 4L, 4R, and 22R
REIL Rwys 3L, 9L, 9R, and 21R
HIRL all runways

DETROIT, MICHIGAN
Amdt 1A 28FEB19

42°13'N-83°21'W
DETROIT METROPOLITAN WAYNE COUNTY (DTW)
RNAV (GPS) PRM Z RWY 22L (CLOSE PARALLEL)

EC-1, 25 FEB 2021 to 25 MAR 2021

EC-1, 25 FEB 2021 to 25 MAR 2021