

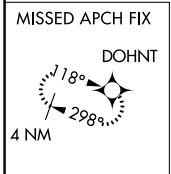
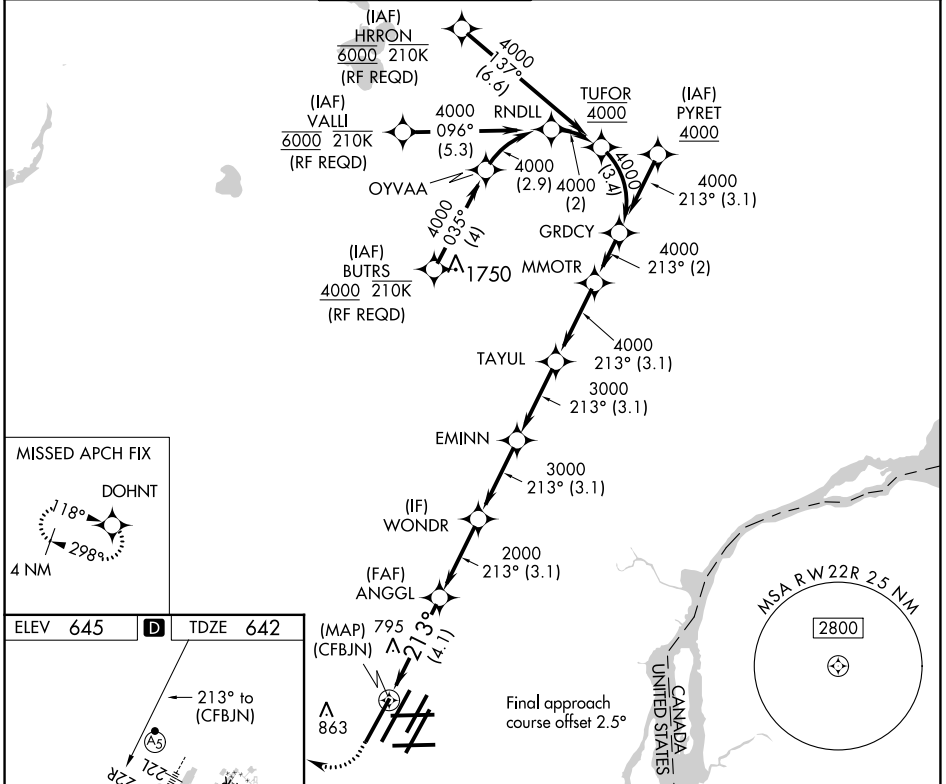
RNAV (RNP) U RWY 22R

DETROIT METROPOLITAN WAYNE COUNTY (DTW)

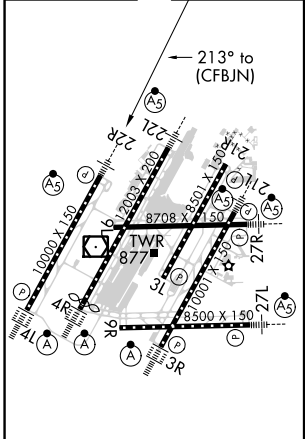
APP CRS 213°	Rwy ldg TDZE 642	10000
	Apt Elev 645	

RNP AR APCH. ▼ For uncompensated Baro-VNAV systems, procedure NA below -19°C (-2°F) or above 54°C (130°F). Simultaneous approach authorized. For inop ALS, increase RNP 0.30 all Cats visibility to RVR 5500.	MALSR 	MISSED APPROACH: Climb to 1100 then climbing right turn to 4000 direct DOHNT and hold.
--	-----------	--

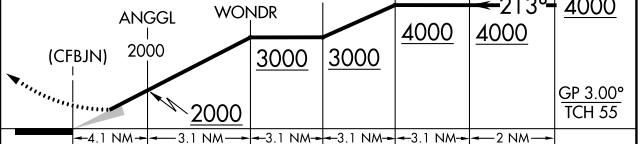
D-ATIS 133.675	DETROIT APP CON 124.05 284.0	METRO TOWER 135.0 317.725	GND CON 121.8 (NW) 119.45 (NE) 132.725 (SW) 119.25 (SE)	CLNC DEL 120.65	CPDLC
--------------------------	--	-------------------------------------	---	---------------------------	-------



ELEV 645	D	TDZE 642
----------	----------	----------



1100	4000	DOHNT	VGSI and RNAV glidepath not coincident (VGSI Angle 3.00/TCH 71).
------	------	-------	--



CATEGORY	A	B	C	D
RNP 0.30 DA		987/30	345 (400-5%)	

TDZ/CL Rwys 3R, 4L, 4R and 22R
HIRL all runways
REIL Rwys 3L, 9L, 9R and 21R

RNAV (RNP) U RWY 22R

EC-1, 25 FEB 2021 to 25 MAR 2021

EC-1, 25 FEB 2021 to 25 MAR 2021

AUTHORIZATION REQUIRED