

WAAS CH 99601 W22A	APP CRS 216°	Rwy Idg 12003 TDZE 637 Apt Elev 645
--	------------------------	--

RNAV (GPS) Z RWY 22L

DETROIT METROPOLITAN WAYNE COUNTY (DTW)

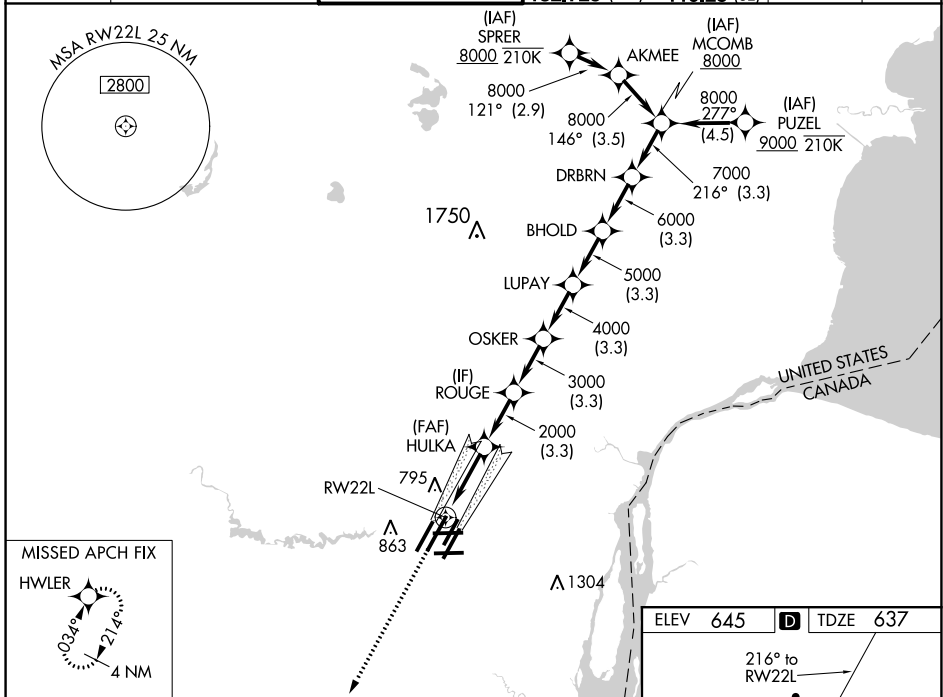
RNP APCH:

▼ For uncompensated Baro-VNAV systems, LNAV/VNAV NA below -10°C (14°F) or above 54°C (130°F). Simultaneous approach authorized. LNAV procedure NA during simultaneous operations. Use of FD or AP required during simultaneous operations. For inop ALS, increase LNAV/VNAV all Cats visibility to RVR 4500 and LNAV Cat C/D visibility to 1½ SM. #RVR 1800 authorized with use of FD or AP or HUD to DA.

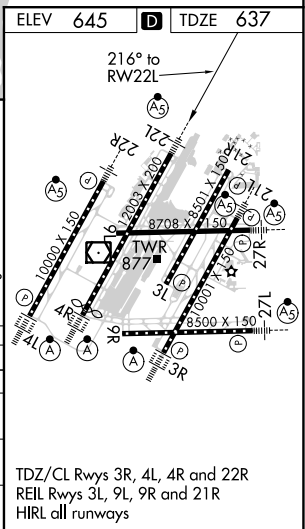


MISSED APPROACH:
Climb to 4000 direct
HWLER and hold.

D-ATIS 133.675	DETROIT APP CON 124.05 284.0	METRO TOWER 128.125 317.725	GND CON 121.8 (NW) 119.45 (NE) 132.725 (SW) 119.25 (SE)	CLNC DEL 120.65	CPDLC
--------------------------	--	---------------------------------------	---	---------------------------	-------



4000	HWLER				
*LNAV only.					
RW22L → 1.3 NM → HULKA 2000 → 3 NM → ROUGE 3000 → 3.3 NM → OSKER 4000 → 3.3 NM → LUPAY 5000 → 3.3 NM → BHOLD 6000 → 3.3 NM → DRBRN 7000 → 3.3 NM → MCOMB 8000					
GP 2.85°	TCH 60'				
CATEGORY	3	A	B	C	D
LPV DA#		837/24		200 (200-½)	
LNAV/VNAV DA		938/24		301 (300-½)	
LNAV MDA	1100/24	463 (500-½)		1100/50 463 (500-¾)	
CIRCLING	1180-1	535 (600-1)		1180-1½ 535 (600-1½) 1240-2 595 (600-2)	



EC-1, 25 FEB 2021 to 25 MAR 2021

EC-1, 25 FEB 2021 to 25 MAR 2021