

WAAS CH <b>70642</b> <b>W22D</b>	APP CRS <b>216°</b>	Rwy Idg <b>10000</b> TDZE <b>642</b> Apt Elev <b>645</b>
--	------------------------	--

# RNAV (GPS) Z RWY 22R

DETROIT METROPOLITAN WAYNE COUNTY (DTW)

RNP APCH.

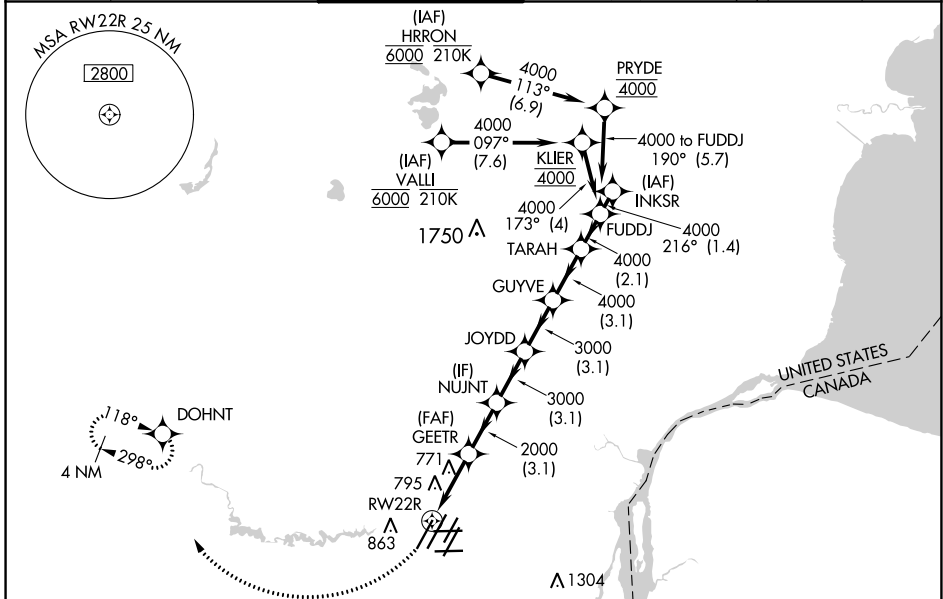
Simultaneous approach authorized. Use of FD or AP required during simultaneous operations. LNAV procedure NA during simultaneous operations. For uncompensated Baro-VNAV systems, LNAV/VNAV NA below -1°C or above 54°C. For inop ALS, increase LNAV/VNAV all Cats visibility to RVR 4500.

MALSR



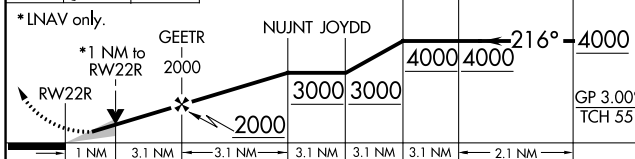
MISSED APPROACH: Climb to 1100 then dimbing right turn 4000 direct DOHNT and hold, continue climb in hold to 4000.

D-ATIS <b>133.675</b>	DETROIT APP CON <b>124.05 284.0</b>	METRO TOWER <b>128.125 317.725</b>	GND CON <b>121.8 (NW) 119.45 (NE)</b> <b>132.725 (SW) 119.25 (SE)</b>	CLNC DEL <b>120.65</b>	CPDLC
--------------------------	--	---------------------------------------	---	---------------------------	-------

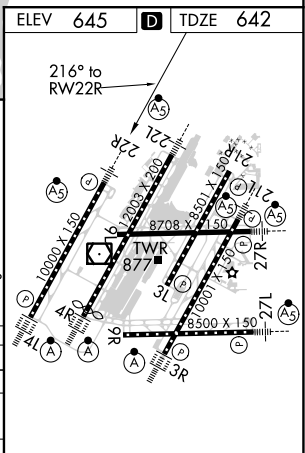


ELEV 645	<b>D</b> TDZE 642
----------	-------------------

1100 4000 DOHNT VGSI and RNAV glidepath not coincident (VGSI Angle 3.00/ TCH 71)



CATEGORY	A	B	C	D
LPV DA		842/18	200 (200-½)	
LNAV/VNAV DA		948/24	306 (400-½)	
LNAV MDA	1040/24	398 (400-½)	1040/35	398 (400-¾)
<b>C</b> CIRCLING	1180-1	535 (600-1)	1180-1½	1240-2
			535 (600-1½)	595 (600-2)



TDZ/CL Rwsy 3R, 4L, 4R and 22R  
REIL Rwsy 3L, 9L, 9R and 21R  
HIRL all runways

EC-1, 25 FEB 2021 to 25 MAR 2021

EC-1, 25 FEB 2021 to 25 MAR 2021