

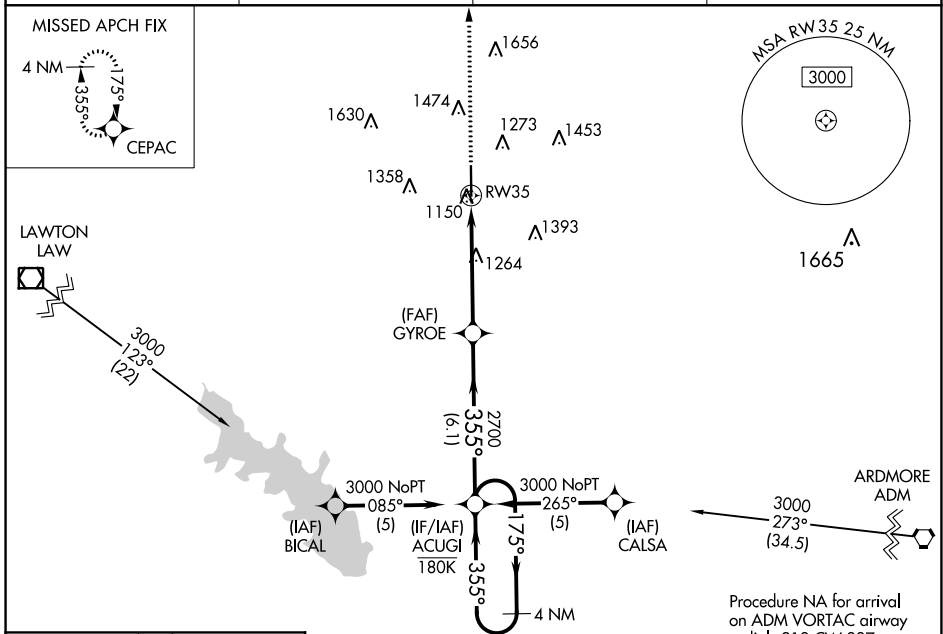
WAAS CH 40241 W35A	APP CRS 355°	Rwy Idg TDZE Apt Elev	6326 1094 1114
--	------------------------	-----------------------------	---

RNAV (GPS) RWY 35

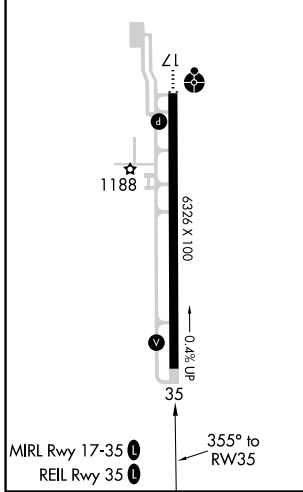
HALLIBURTON FIELD (DUC)

RNP APCH. ▼ For uncompensated Baro-VNAV systems, LNAV/VNAV NA below -17°C or above 54°C.	MISSED APPROACH: Climb to 3000 direct CEPAC and hold.
---	---

AWOS-3 119.075	FORT SILL APP CON 118.6 290.375	CLNC DEL 118.4	UNICOM 122.8 (CTAF)
--------------------------	---	--------------------------	-------------------------------



ELEV 1114	TDZE 1094
-----------	-----------



3000	CEPAC	ACUGI	4 NM Holding Pattern	
*LNAV only.		GYROE 2700	175° → 3000	
RW35		355°	← 355°	
1.2 NM to RW35		2700	GP 3.00° TCH 42	
1.2 NM		3.7 NM	6.1 NM	
CATEGORY	A	B	C	D
LPV DA		1294-3/4	200 (200-3/4)	
LNAV/VNAV DA		1397-7/8	303 (300-7/8)	
LNAV MDA	1520-1	426 (500-1)	1520-1 1/4	426 (500-1 1/4)
CIRCLING	1560-1 446 (500-1)	1580-1 466 (500-1)	1780-1 3/4 666 (700-1 3/4)	1780-2 666 (700-2)

SC-1, 25 FEB 2021 to 25 MAR 2021

SC-1, 25 FEB 2021 to 25 MAR 2021