

WAAS CH <b>63016</b> W01A	APP CRS <b>014°</b>	Rwy Idg TDZE Apt Elev	<b>6001</b> <b>3706</b> <b>3706</b>
---------------------------------	------------------------	-----------------------------	---

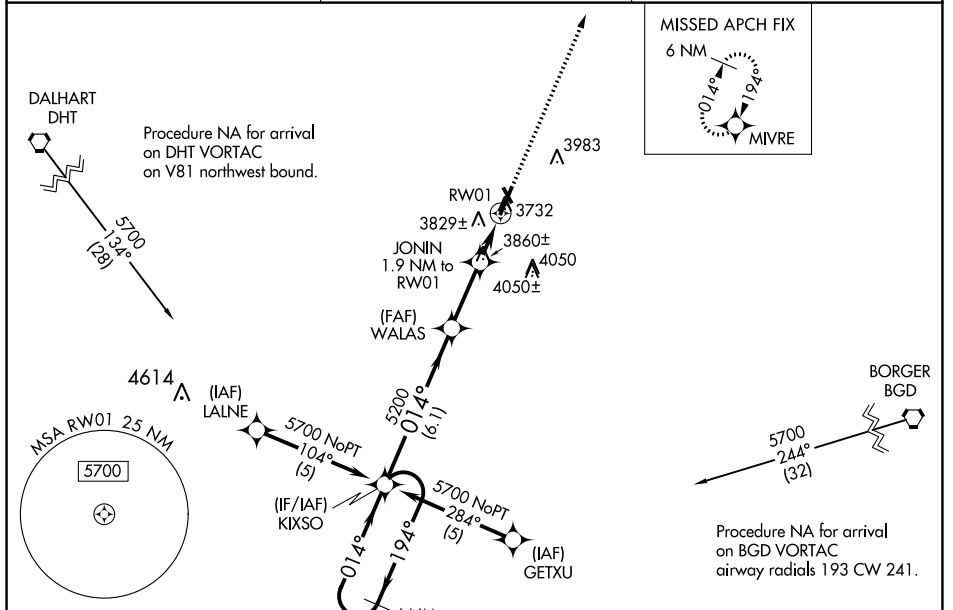
# RNAV (GPS) RWY 1

MOORE COUNTY (DUX)

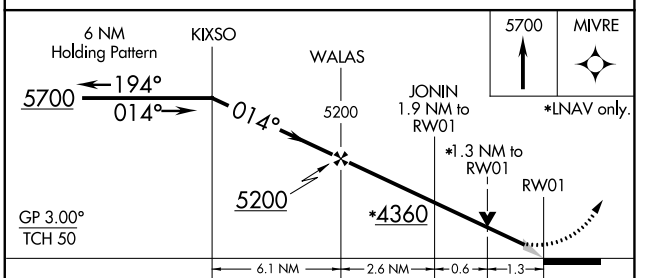
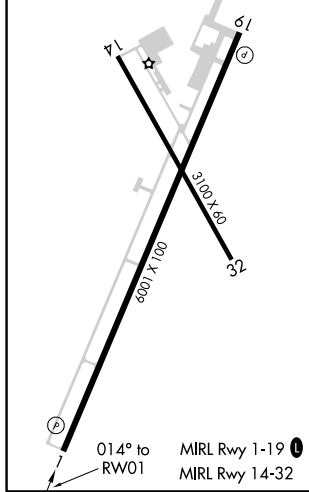
Baro-VNAV NA when using Dalhart altimeter setting. For uncompensated Baro-VNAV systems, LNAV/VNAV NA below -22°C (-7°F) or above 41°C (105°F). DME/DME RNP-0.3 NA. When local altimeter setting not received, use Dalhart altimeter setting and increase DA 104 feet and all MDA 120 feet, increase LNAV/VNAV all Cats, LNAV Cats C and D and Circling Cat C and D visibility ¼ mile. VDP NA with Dalhart altimeter setting. Night landing: Rwy 14, 32 NA.

MISSED APPROACH:  
Climb to 5700 direct to MIVRE and hold.

AWOS-3 <b>118.075</b>	ALBUQUERQUE CENTER <b>127.85 285.475</b>	UNICOM <b>122.8 (CTAF) 0</b>
--------------------------	---	---------------------------------



ELEV 3706	TDZE 3706
-----------	-----------



CATEGORY	A	B	C	D
LPV DA	3906-1		200 (200-1)	
LNAV/VNAV DA	4132-1½		426 (500-1½)	
LNAV MDA	4160-1	454 (500-1)	4160-1¼ 454 (500-1¼)	4160-1½ 454 (500-1½)
CIRCLING	4160-1 454 (500-1)	4220-1 514 (600-1)	4220-1½ 514 (600-1½)	4300-2 594 (600-2)

SC-2, 25 FEB 2021 to 25 MAR 2021

SC-2, 25 FEB 2021 to 25 MAR 2021