

WAAS CH 69416 W19A	APP CRS 194°	Rwy Idg TDZE Apt Elev	6001 3701 3706
--	------------------------	-----------------------------	---

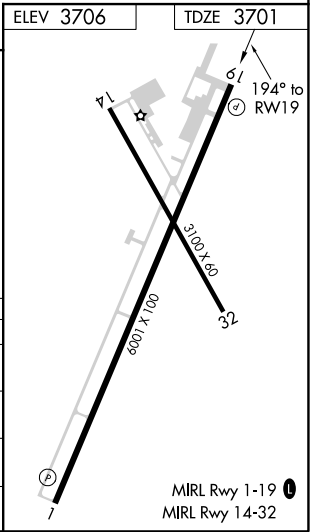
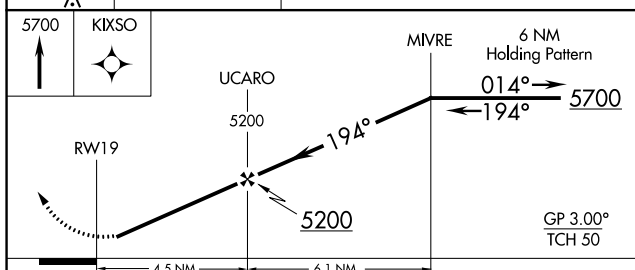
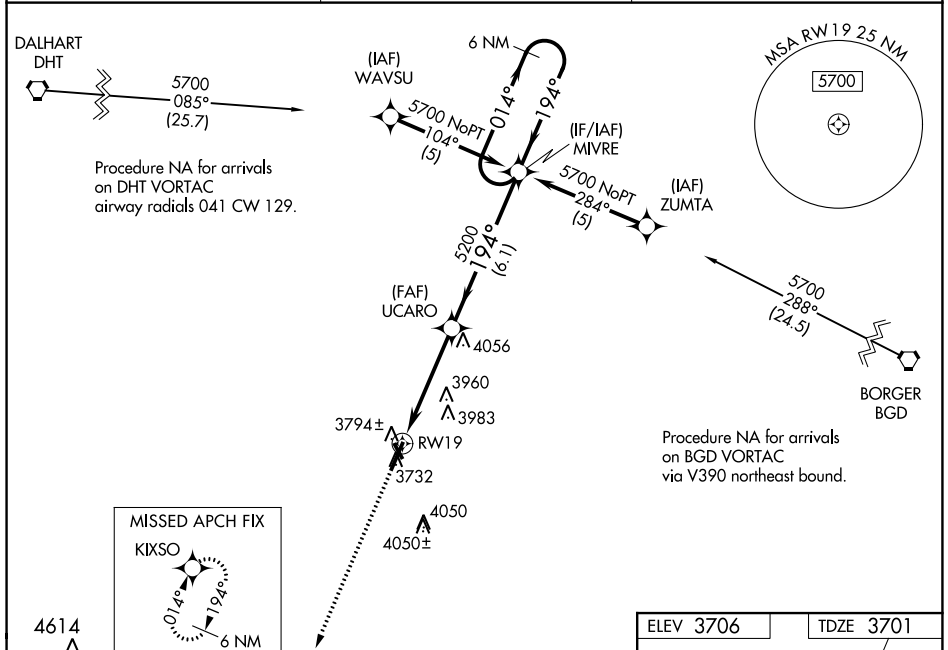
RNAV (GPS) RWY 19

MOORE COUNTY (DUX)

Baro-VNAV NA when using Dalhart altimeter setting. For uncompensated Baro-VNAV systems, LNAV/VNAV NA below -22°C (-7°F) or above 41°C (105°F). DME/DME RNP-0.3 NA. Helicopter visibility reduction below 3/4 SM NA. When local altimeter setting not received, use Dalhart altimeter setting and increase DA 104 feet and all MDA 120 feet, increase LPV all Cats, and Circling Cat D visibility 1/4 mile, and LNAV/VNAV all Cats, LNAV Cats C/D and Circling Cat C visibility 1/2 mile. Night landing: Rwy 14, 32 NA.

MISSED APPROACH:
Climb to 5700 direct to KIXSO and hold.

AWOS-3 118.075	ALBUQUERQUE CENTER 127.85 285.475	UNICOM 122.8 (CTAF) 0
--------------------------	---	---------------------------------



CATEGORY	A	B	C	D
LPV DA	3951-1		250 (300-1)	
LNAV/VNAV DA	4340-2 1/4		639 (700-2 1/4)	
LNAV MDA	4260-1	559 (600-1)	4260-1 1/2 559 (600-1 1/2)	4260-1 3/4 559 (600-1 3/4)
CIRCLING	4260-1	554 (600-1)	4260-1 1/2 554 (600-1 1/2)	4300-2 594 (600-2)

SC-2, 25 FEB 2021 to 25 MAR 2021

SC-2, 25 FEB 2021 to 25 MAR 2021