

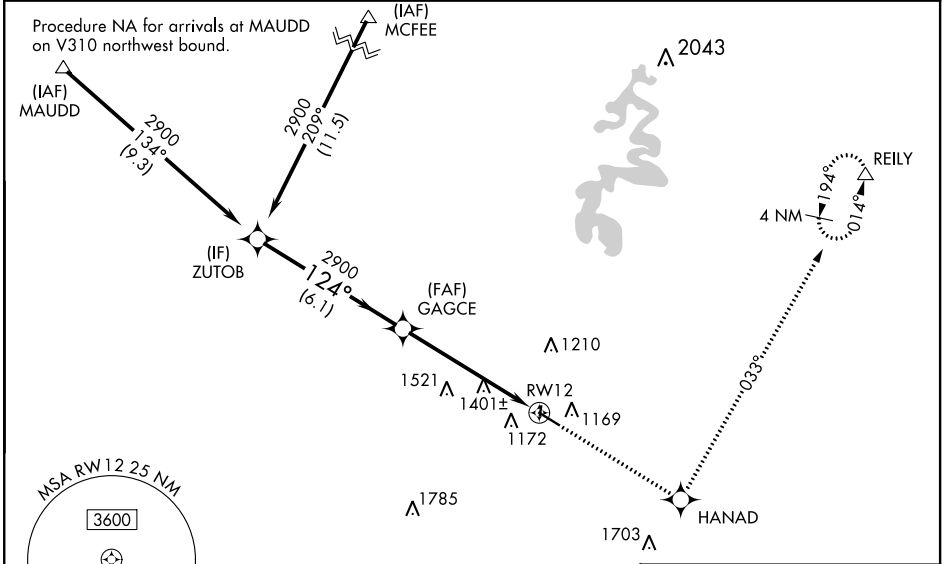
WAAS CH 93706 W12A	APP CRS 124°	Rwy Idg TDZE Apt Elev	5000 1017 1022
--	------------------------	-----------------------------	---

RNAV (GPS) RWY 12

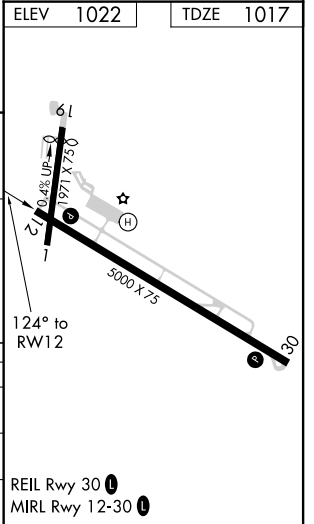
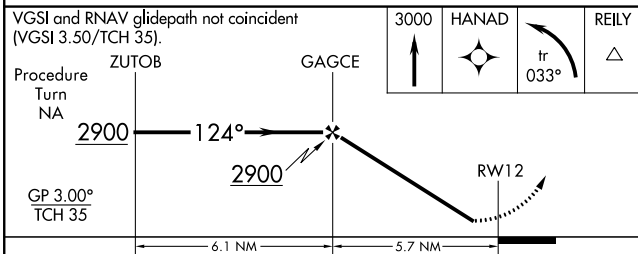
STUART POWELL FIELD (DVK)

RNP APCH.	<p>When local altimeter setting not received, use Lexington altimeter setting; increase all DA/MDA 80 feet; increase LPV all Cats and LNAV/VNAV all Cats and LNAV all Cats visibility ¼ SM. For uncompensated Baro-VNAV systems, LNAV/VNAV NA below -17° C or above 47° C. Baro-VNAV NA when using Lexington altimeter setting. Rwy 12 helicopter visibility reduction below ¾ SM NA.</p>	<p>MISSED APPROACH: Climb to 3000 direct HANAD and left turn on 033° track to REILY and hold.</p>
-----------	---	---

AWOS-3 128.325	LEXINGTON APP CON 120.15 259.3	UNICOM 122.8 (CTAF)
--------------------------	--	-------------------------------



ELEV 1022	TDZE 1017
-----------	-----------



CATEGORY	A	B	C	D
LPV DA	1357-1¼		340 (400-1¼)	
LNAV/VNAV DA	1785-2¾		768 (800-2¾)	
LNAV MDA	1660-1	643 (700-1)	1660-1¾ 643 (700-1¾)	1660-2 643 (700-2)

SE-1, 25 FEB 2021 to 25 MAR 2021

SE-1, 25 FEB 2021 to 25 MAR 2021