

WAAS CH 70506 W30A	APP CRS 305°	Rwy Idg TDZE 1016 Apt Elev 1022	5000
----------------------------------------	------------------------	-----------------------------------------------------	-------------

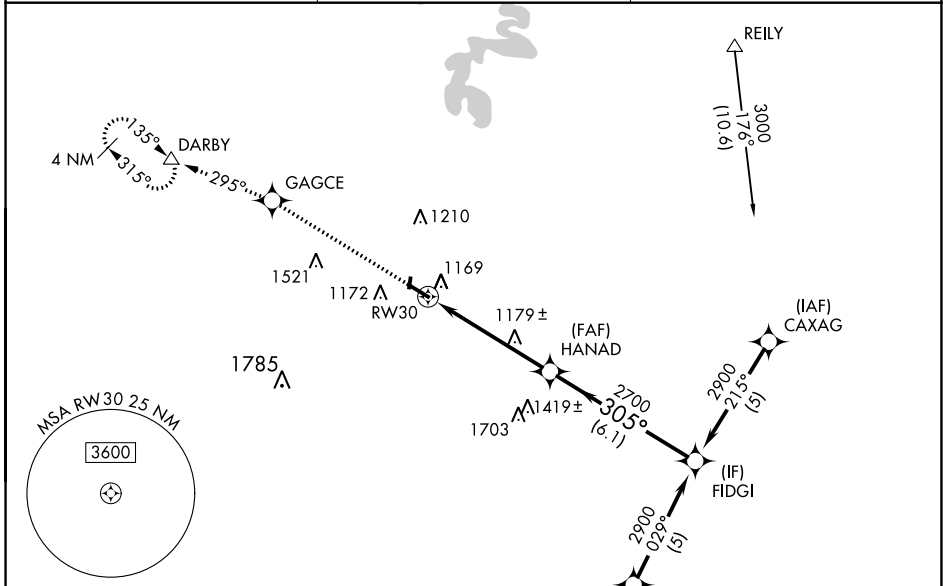
RNAV (GPS) RWY 30

STUART POWELL FIELD (DVK)

When local altimeter setting not received, use Lexington altimeter setting and increase all DAs/MDAs 80 feet, LPV all visibilities ¼ mile, LNAV/VNAV all visibilities ¼ mile, LNAV Cat C/D and Circling Cat C/D ¼ mile. For uncompensated Baro-VNAV systems, LNAV/VNAV NA below -17° C (2° F) or above 46° C (114° F). VDP and Baro-VNAV NA when using Lexington altimeter setting. DME/DME RNP-0.3 NA. Rwy 30 helicopter visibility reduction below ¾ SM NA. Rwy 1, 19 helicopter visibility reduction below 1 SM NA. Circling Rwy 1, 19 NA at night.

MISSED APPROACH: Climb to 3000 direct GAGCE and on 295° track to DARBY and hold.

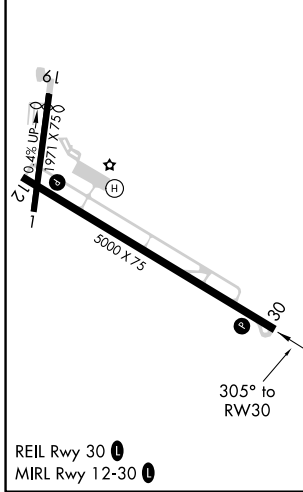
AWOS-3 128.325	LEXINGTON APP CON 120.15 259.3	UNICOM 122.8 (CTAF) 0
--------------------------	------------------------------------------	---------------------------------



SE-1, 25 FEB 2021 to 25 MAR 2021

SE-1, 25 FEB 2021 to 25 MAR 2021

ELEV 1022	TDZE 1016
-----------	-----------



3000	GAGCE	Ir 295°	DARBY	Procedure Turn NA
*LNAV only:				FIDGI
				GP 3.00° TCH 30
CATEGORY	A	B	C	D
LPV DA	1282-1		266 (300-1)	
LNAV/VNAV DA	1439-1½		423 (500-1½)	
LNAV MDA	1440-1 424 (500-1)		1440-1¼ 424 (500-1¼)	
CIRCLING	1480-1 458 (500-1)	1560-1 538 (600-1)	1560-1½ 538 (600-1½)	1720-2¼ 698 (700-2¼)