

JUDTH SEVEN DEPARTURE (RNAV)

AL-6646 (FAA)

PHOENIX DEER VALLEY (DVT)
PHOENIX, ARIZONA

SW-4, 25 FEB 2021 to 25 MAR 2021

ATIS

126.5

CLNC DEL

123.9

GND CON

121.8

DEER VALLEY TOWER**

118.4 (Rwy 7R-25L)

120.2 (Rwy 7L-25R)

PHOENIX DEP CON

120.7 239.0

TAKEOFF MINIMUMS

Rwys 7L/R: NA - Obstacles.

Rwys 25L/R: Standard with minimum climb of 370' per NM to 4600.

NOTE: RNAV 1.

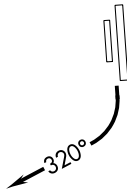
NOTE: Turbojets and turboprops only.

NOTE: RADAR required.

NOTE: GPS required.

NOTE: Aircraft departing KGEU and KGYR ATC assigned only.

**TOP ALTITUDE:
ASSIGNED BY ATC**



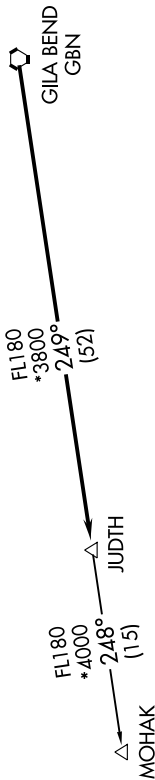
NOTE: Chart not to scale.

DEPARTURE ROUTE DESCRIPTION

TAKEOFF RUNWAYS 25L/R: Climbing right turn heading 320° or as assigned by ATC, thence . . .

. . . expect RADAR vectors to GBN VORTAC, then on track 249° to JUDTH, then on (transition).
Maintain ATC assigned altitude, expect filed altitude 3 minutes after departure.

MOHAK TRANSITION (JUDTH7..MOHAK)



JUDTH SEVEN DEPARTURE (RNAV)

(JUDTH7..JUDTH) 24MAY18

PHOENIX, ARIZONA
PHOENIX DEER VALLEY (DVT)

SW-4, 25 FEB 2021 to 25 MAR 2021